



Thomas Henry Carter
Chair
U.S. Section
March 11, 1911 to September 17, 1911



Politician

Born: October 30, 1854, near Portsmouth, Ohio

Died: September 17, 1911, at Washington, D.C.

1882 Admitted to the bar

1889-1891 Member of Congress. First Representative; Chairman, Committee on Mines and Mining 1891-1892 Commissioner of the General Land Office

1895- 1901 United States Senator. Chairman of the Committee on Relations with Canada; Committee on the Census

1905-1911 United States Senator. Chairman Committee on Organization, Conduct, and Expenditures of Executive Departments; Committee on Expenditures in the Department of State; Committee on Irrigation and Reclamation of Arid Lands

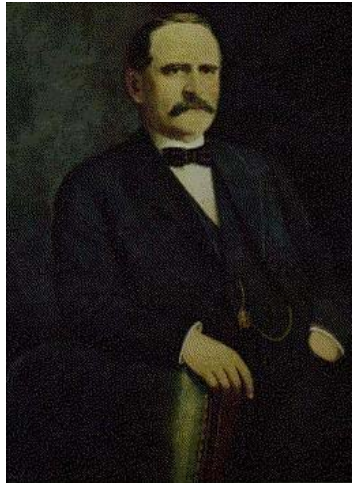
1911 Chairman of the United States section of the International Joint Commission



James Albertus Tawney Chair

U.S. Section

January 8, 1912 to November 30, 1914



Politician

Born: January 3, 1855 in Mount Pleasant Township, near Gettysburg, Pennsylvania

Died: June 12, 1919 at Excelsior Springs, Mo

1877-1881 Blacksmith and machinist

1882 Admitted to the bar. Commenced practice in Winona, Minnesota

1890 Elected a member of the State Senate of Minnesota

1893-1911 Congressman. Majority whip; Chairman, Committee on Appropriations

1911 Commissioner of the International Joint Commission

1912-1914 Chairman of the United States section of the International Joint Commission

1912 Reference: Examine pollution in all boundary waters

1912 Reference: Necessity of dykes for Detroit River and Bois Blanc Island

1912 Reference: Regulation of Lake of the Woods water levels

1912 Application: Approval of the Watrous Island Boom in the Rainy River

1913 Application: Compensating works on the St. Marys River

1913 Application: Hydro Power on St Marys River

1913 Application: Diversion of water from Shoal Lake, Lake of the Woods.



Obadiah Gardner

Chair

U.S. Section

December 1, 1914 to February 28, 1921

March 23, 1921 to April 5, 1923



Politician

Born: September 13, 1852 near Port Huron, Michigan

Died: July 24, 1938 in Augusta, Maine

1897-1907 Master of the Maine State Grange

1911 Appointed as chairman of the board of State assessors, but resigned, having been appointed Senator

1911-1913 Senator

1913 Appointed a member of the International Joint Commission

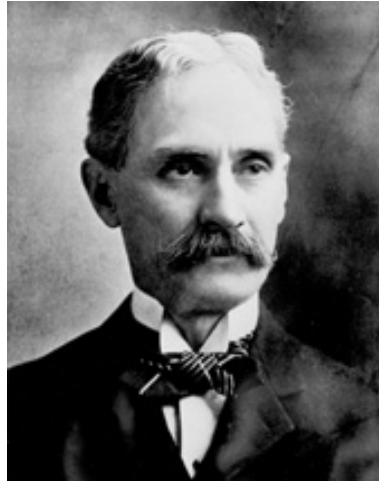
1914-1923 Chairman of the United States section of the International Joint Commission

1916 Application: Dredging of the St. Clair River

1918 Application: Construction of a weir on the St. Lawrence River



Clarence Don Clark
Chair
U.S. Section
April 6, 1923 to April 30, 1929



Lawyer, politician

Born: April 16, 1851, in Sandy Creek, New York

Died: November 18, 1930, in Evanston, Wyoming

1874 Admitted to the bar

1882 – 1884 Prosecuting attorney of Uinta County

1889 Delegate to the State constitutional convention

1890-1893 Member of Congress

1895-1917 United States Senator Chairman, Committee on Railroads; Committee on Judiciary; Committee on Geological Survey

1919 Member of the International Joint Commission

1923-1929 Chairman of the International Joint Commission

1925 Application: Construction of Peace Bridge, Fort Erie, Buffalo

1927 Application: Construction of dykes adjacent to the Kootnay River



John H. Bartlett Chair

U.S. Section

June 13, 1929 to March 6, 1933



Lawyer, postmaster, politician

Born: March 15, 1869, at Sunapee, New York

Died: March 19, 1952, at Portsmouth, New Hampshire

1894 Admitted to the New Hampshire Bar

1899-1908 Portsmouth postmaster

1905-1906 Colonel in Governor McLane's staff. Active in making local arrangements in Portsmouth for the 1905 Russo-Japanese Peace Conference

1916 Presiding officer at the state Republican convention

1917 Elected to the state legislature

1918 Governor of New Hampshire

1929 - 1933 Appointed chairman of the U.S. section of the Joint International Commission

1932 Application: Dyking on the Kootnay River



Augustus O. Stanley

Chair

U.S. Section

March 7, 1933 to January 31, 1954



Lawyer, politician

Born: May 21, 1867, at Shelbyville, Kentucky

Died: August 12, 1958, at Washington, D.C.

1889 Graduated from Centre College, Danville, Kentucky

1891-1893 Professor of belles-lettres at Christian College and principal of Mackville Academy

1894 Admitted to the bar and commenced practice in Flemingsburg, Kentucky

1900 Presidential elector on the Democratic ticket

1903-1915 Congressman

1915-1919 Governor of Kentucky

1919-1925 United States Senator

1925 Resumed law practice in Washington, D.C.

1930-1933 Member of the International Joint Commission

1933-1954 Chair of the US Section of the International Joint Commission

1935 Application: Dyking on the Kootnay River

1936 Reference: Waterway from St. Lawrence to Hudson River

1936 Application: Construction of a dam on East Fork of the Poplar River

1938 Application: construction of Corra Linn Dam and Storage on Kootnay Lake

1940 Application: Grand Coulee Dam and reservoir on the Columbia River

1940 Application: Adjustment of drainage districts of the Kootnay Flats

1940 Application: Storage of additional water on Kootnay Lake

1941 Application: Alter drawdown pattern for Kootnay Lake

1942 Application: Continue additional storage on Kootnay Lake



Agustus O. Stanley -2-

- 1943 Application: Reclaim flooded lands on Duck Lake
- 1944 Reference: Use and development of waters of Columbia River
- 1944 Application: Annual installation of a temporary dam at Ash Rapids
- 1946 Reference: Pollution in St. Clair and Detroit rivers
- 1948 Reference: Pollution in Niagara River
- 1948 Reference: Water use and allocation in Mid West Basins
- 1950 Reference: Remedial works on Niagara Falls
- 1950 Application: Reclamation and water storage on Duck Lake
- 1951 Application: Construction of Waneta dam.
- 1952 Reference: Regulation of Lake Ontario water levels.
- 1952 Application: Construction of Hydro-Power dam on the St. Lawrence River
- 1954 Application: Construction of the Libby Dam and reservoir
- 1954 Application: Regulation of Duck Lake



Leonard Jordan

Chair

U.S. Section

October 7, 1955 to August 14, 1957



Politician

Born: May 15, 1899 at Mount Pleasant, Utah

Died: June 30, 1983 at Boise, Idaho

1923 Graduated from University of Oregon

1947-1949 Member of the State Legislature

1951-1955 Governor of Idaho

1955-1957 Chair of the US Section of the International Joint Commission

1956 Reference: Developing tidal power from Passamaquoddy Bay

1958-1959 Member of the International Development Advisory Board

1962-1972 United States Senator



Douglas McKay

Chair

U.S. Section

August 15, 1957 to July 22, 1959



Businessman, politician

Born June 24, 1893 in Portland, Oregon

Died July 22, 1959 in Salem, Oregon

1917 B.S. degree Oregon State College Served in World War I and was awarded the Purple Heart.

1927 Purchased car dealership.

1932 Elected mayor of Salem, Oregon

1934 Elected Senator from Marion County for the State Legislature. Reelected 1939, 1943, and 1945

1942 Commissioned Captain. He was discharged at the end of W.W. II as a Major.

1946 State campaign chairman for Governor Earl Snell.

1952 Appointed Secretary of the Interior

1957-1959 Chair of the U.S. Section of the International Joint Commission



Edward Bacon Chair

U.S. Section

June 3, 1960 to June 1, 1961



Commander, U.S.N.R., Deputy Assistant Secretary of U.S. Army

Born: 1897 in Milwaukee, Wisconsin

Died: 1968 in Boston, Massachusetts

1918 Joined U.S. Marine Corps

1920 A.B., Harvard University

1920-1926 Cutler-Hammer Corporation, Milwaukee, WI

1926-1933 Vice-President of First Wisconsin National Bank

1928-1934 Director, Vice President, and Treasurer of Wisconsin Bankshares Corporation

1933-1935 Reorganization Consultant to Corporations in Wisconsin

1935-1937 Comptroller, Cutler-Hammer Board of Directors

1937-1941 President and owner of Smith Steel Foundry Company

1941-1946 Commander, U.S.N.R.

1945-1946 Navy Price Adjustment Board

1945-1952 Export-Import Bank of Washington

1953-1960 Chairman, Executive Council, Air Coordinating Committee

1954 Assistant to the Secretary of the Army for Canal Zone Affairs

1955-1960 Deputy Assistant Secretary of the Army for Financial Management

1958 Member of Tolls Committee, Saint Lawrence Seaway

1958-1961 Member, Interstate Commission, Potomac River Basin

1959-1961 Chair of the U.S. Section of the International Joint Commission

1961 Reference: Regulation of Niagara Falls

1961 Application: construction of Niagara Falls Control Structures



Teno Roncalio

Chair

U.S. Section

June 2, 1961 to August 29, 1964



Lawyer, politician

Born: March 23, 1916, at Rock Springs, Wyoming

Died: March 30, 2003, at Cheyenne, Wyoming

1947 Graduated from the University of Wyoming.

1941-1946 United States Army

1940-1941 United States Senate Library

1950-1956 Deputy prosecuting attorney of Laramie County, Wyoming

1957-1961 Chair of the Wyoming Democratic Central committee

1961-1964 Chair of the International Joint Commission, United States-Canada

1962 Reference: Waterway from St. Lawrence River to Hudson River

1963 Application: Dredging Niagara Falls

1964 Reference: Regulation of water levels on the Great Lakes Basin

1964 Reference: Water quality of Lake Erie, Lake Ontario and St. Lawrence River

1965-1967 Member of Congress

1971-1978 Member of Congress

1979-1982 Special Master in Wyoming's Big Horn adjudication of Indian Water Rights



Matthew E. Welsh

Chair

U.S. Section

January 7, 1966 to March 17, 1970



Politician

Born: September 15, 1912 at Detroit, Michigan

Died: May 28, 1995 in Indianapolis, Indiana

1934 Graduated from the University of Pennsylvania

1937 J.D. degree from the University of Chicago Law School

1941- 1943 Member to the Indiana House of Representatives

1943 Served during World War II as a lieutenant in the U.S. Naval Reserve

1950-1951 U.S. attorney for the Southern district of Indiana

1955-1959 Indiana State Senator Democratic floor leader in the 1957 and 1959 terms

1961-1965 Governor of Indiana

1966-1970 Chair of the U.S. Section of the International Joint Commission

1966 Application: Temporary storage on Kootenay Lake

1967 Reference: Enhance the beauty of Niagara Falls

1969 Application: Regulation of Duck Lake

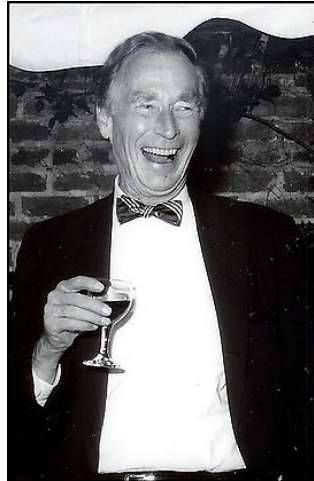


Christian Archibald Herter Jr.

Chair

U.S. Section

March 18, 1970 to April 4, 1975



Lawyer, politician

Born: January 29, 1919 at Brooklyn, New York

Died: September 16, 2007 at Washington, D.C.

1941 Graduate of Harvard University

1941 Joined the Army. Served in Europe and decorations included three awards of the Bronze Star as well as the Purple Heart

1948 Graduate of Harvard Law School

1950 Elected to Massachusetts House of Representatives. Reelected in 1952

1956 Elected to the State Executive Council

1961-1967 Mobile Oil Corporation. Served as Vice-President

1967-1969 Chair of the New York Urban Coalition

1970 Deputy Assistant Secretary of State for environmental and population affairs

1970-1975 Chair of the US Section of the International Joint Commission

1971 Reference: Social economic conditions of residents of Point Roberts, Washington

1972 Reference: Water quality of Lake Huron and Lake Superior

1972 Reference: Pollution of Great Lakes System from land use

1972 Reference: Great Lakes Water Quality Agreement

1973 Reference: Regulation of Lake Superior

1973 Reference: Flooding of Richelieu River and Lake Champlain

1983 Deputy United States Commissioner on the International Whaling Commission



Henry P. Smith III
Chair
U.S. Section
April 5, 1975 to April 25, 1978



Politician

Born: September 29, 1911 at North Tonawanda, New York

Died: October 1, 1995 at Washington, D.C.

1933 Graduated Dartmouth College

1936 Graduated Cornell Law School and admitted to the Bar

1961 Appointed as Niagara County Judge, Surrogate, and Family Court Judge

1961-1963 Mayor of North Tonawanda

1965-1975 Member of Congress. The third ranking Republican on the House Committee on the Judiciary; Ranking minority member of the Subcommittee on Criminal Justice; Served on the House Committee on the District of Columbia.

1972 Recipient of the Great Lakes Commission Conservation Award

1975-1978 Chair of the US Section of the International Joint Commission

1975 Reference: Pollution of waters by Garrison Diversion Unit, North Dakota

1975 Application: Construction of the Toussaint Causeway, St. Lawrence River

1977 Reference: Regulation of Lake Erie to reduce floor and erosion

1977 Reference: Diversions of Great Lakes Waters

1977 Reference: Great Lakes data collection network

1977 Reference: International Great Lakes Levels Advisory Board

1977 Reference: Water quality of Poplar River



Robert J. Sugarman
Chair
U.S. Section
April 26, 1978 to March 4, 1981



Lawyer, professor

Born: May 29, 1938 at Meridan, Connecticut

Died: June 28, 2008

1960 A.B. degree Brown University, Classics

1964 Graduate of The Harvard Law School, where he was editor of The Harvard Law Review

1965-1966 Law clerk to Honorable Abraham L. Freeman, US Court of Appeals

1966 Partner at law firm of Dechert Price and Rhoads

1970-1972 Lecturer on environmental law at the Free School of Philadelphia

1970-1976 Legal advisory committee of the Environmental Defense Fund Inc.

1971 Adjunct Professor of Planning at the University of Pennsylvania

1975 Member of the board of directors and executive committee of the Public Law Centre of Philadelphia

1976 Member of the board of directors of Community Legal Services, Inc.

1978 Adjunct Professor of Planning at Temple University

1978 Chairman of the U.S. Section of the International Joint Commission

1981 Application: Replacement of the Zosel Dam, Osoyoos



Robert Cameron McEwen
Chair
U.S. Section
October 30, 1981 to 1989



Lawyer, politician

Born: January 5, 1920, at Ogdensburg, New York

Died: June 15, 1997, at Ogdensburg, New York

1947 Graduate of Albany Law School and admitted to the bar

1947 Started law practice in Ogdensburg, N.Y.

1942-1946 United States Army Air Corps Discharged as a sergeant

1954-1964 New York State Senator

1965-1981 Member of Congress

1981-1989 Chair of the U.S. section of the International Joint Commission

1985 Reference: Water quality and quantity of the Flathead River

1986 Reference: Regulation of water levels in the Great Lakes – St. Lawrence River Basin



Gordon K. Durnil
Chair
U.S. Section
October 10, 1989 to April 7, 1994



Businessman, lawyer

Born: February 20, 1936 in Indianapolis, Indiana,

1960 B.Sc. from the Indiana University School of Business

1965 Doctor of Jurisprudence Degree from the Indiana University School of Law

1979 Director of the Indiana Ronald McDonald

1981-1989 Chairman of the Indiana Republican Party

1989 -1994 Chairman of the International Joint Commission



Thomas L. Baldini
Chair
U.S. Section
April 7, 1994



Teacher, public administrator

Born: Marquette, Michigan

1965 B.Sc. in secondary education in at Northern Michigan University

1965-1983 Teacher at Marquette Senior High School

1983-1990 Special assistant for Upper Peninsula affairs to Michigan Governor. Advised the governor on policy issues including negotiation of the Great Lakes Charter and the Great Lakes Toxic Substances Control Agreement

1985-1989 Education advisor to Governor Blanchard

1987 Appointed to represent Michigan on the Great Lakes Economic Development Commission of the Council of Great Lakes Governors.

1991-1994 Assistant to the superintendent for personnel and finance for the Marquette area public schools

1994 Chair of the U.S. section of the International Joint Commission

1997 Reference: International Watershed Boards

1998 Reference: Hydro Power on the Niagara River

1999 Reference: Bulk diversions of water



Dennis L. Schornack
Chair
U.S. Section
April 8, 2002 to August 2008



Public administrator

Born: Essexville, Michigan

1975 B.A. and B.S. from Michigan State University

1976 Master of Arts from Michigan State University

1976 Rehabilitation Counselor with the Greater Lansing Urban League

1979 Masters in Public Health at the University of Michigan

1984 Executive Assistant for Legislative Affairs to the Senate Majority Leader. Worked for over five years in the House of Representatives as a Health Policy Analyst

1985-1988 Doctoral program in health policy at the University of Michigan

1991 Appointed to the board of the regional Great Lakes Protection Fund. Reappointed for four additional two-year terms

1991-2002 Served in senior positions under Michigan Governor John Engler, including Commissioner of Low-Level Radioactive Waste, Special Advisor for Strategic Initiatives, Director of the Office of Health Care Reform and Policy Development and Senior Policy Advisor

2002-2008 Chair of the U.S. section of the International Joint Commission

2004 Reference: Alburg-Swanton Bridge, Lake Champlain, Vermont.

2005 Reference: Review of the Great Lakes Water Quality Agreement



Irene B. Brooks
Chair
U.S. Section
March 9, 2008



Administrator

Born: Philadelphia, PA

- 1986 Chester County commissioner
- 1987 Chair of Chester County Commission
- 1987 Member of the Greater Philadelphia Economic Development Coalition
- 1987 Member Pennsylvania State Association of County Commissioners
- 1989-1994 United States Commissioner to the Delaware River Basin Commission
- 1995-2002 Pennsylvania Commissioner and Executive Director, Pennsylvania Department of Environmental Protection, Office for River Basin Cooperation
- 1996-1998 Vice Chair of the Great Lakes Commission
- 1998-2000 Chair of the Great Lakes Commission
- 2002 Commissioner to the U.S. section of the International Joint Commission
- 2008 Appointed Chair of the International Joint Commissioner
- 2008 Reference: Water quality of Missisquoi Bay