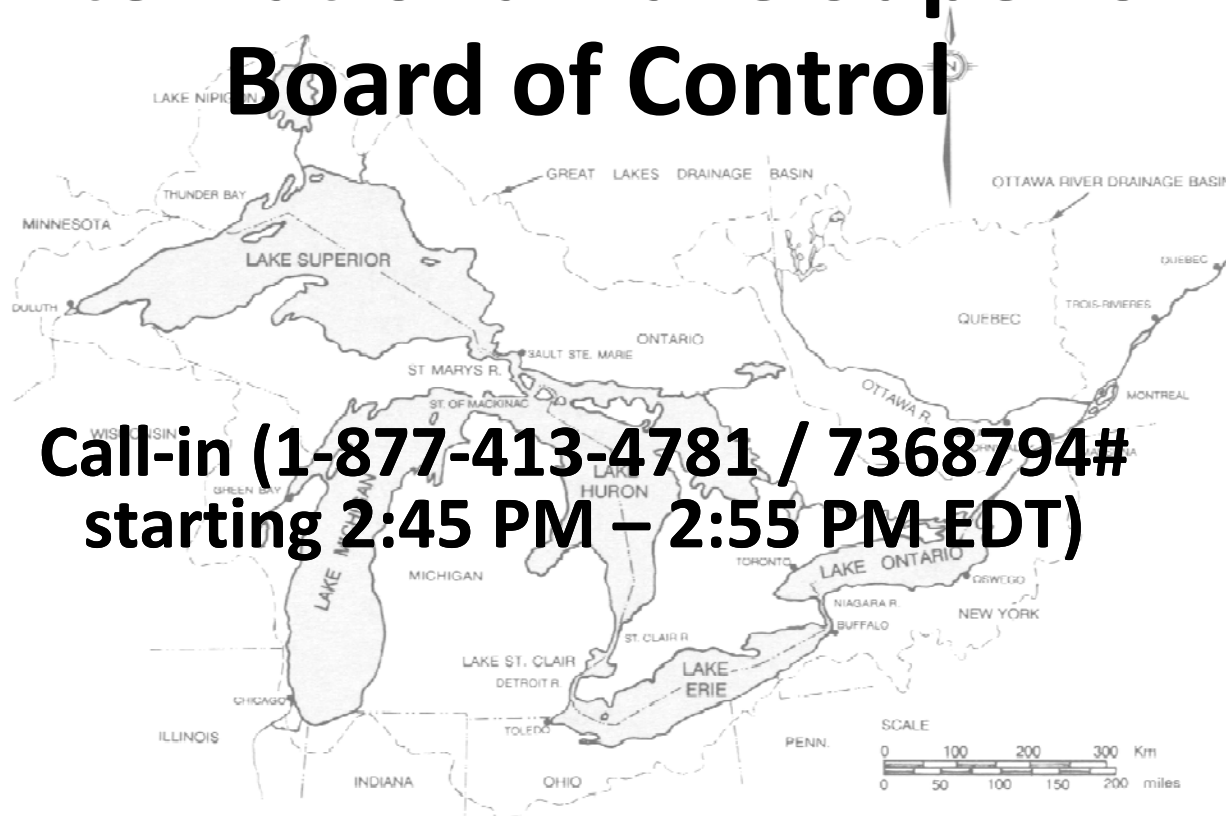


Meeting With The Public

International Lake Superior Board of Control



**Call-in (1-877-413-4781 / 7368794#
starting 2:45 PM – 2:55 PM EDT)**

21 August 2013

International Lake Superior Board of Control



Meeting Outline

- **Welcome**
- **Presentation**
- **Teleconference to share thoughts among callers**
- **Participants identify and discuss local water issues**
- **Further Questions, evaluation, and closing**

21 August 2013

International Lake Superior Board of Control



Presentation Outline

- The International Joint Commission (IJC)
- The International Lake Superior Board of Control (ILSBC)
- Lake Superior outflow regulation
- Current (and forecasted) levels and issues
- International Upper Great Lakes Study

21 August 2013

International Lake Superior Board of Control



IJC Responsibilities

- **Independent organization established by the Boundary Waters Treaty of 1909**
- **Operates from the Alaska-Yukon border to the Atlantic Coast**
- **Prevents and resolves disputes over shared water**
- **Seeks consensus and greater good of both countries**

21 August 2013

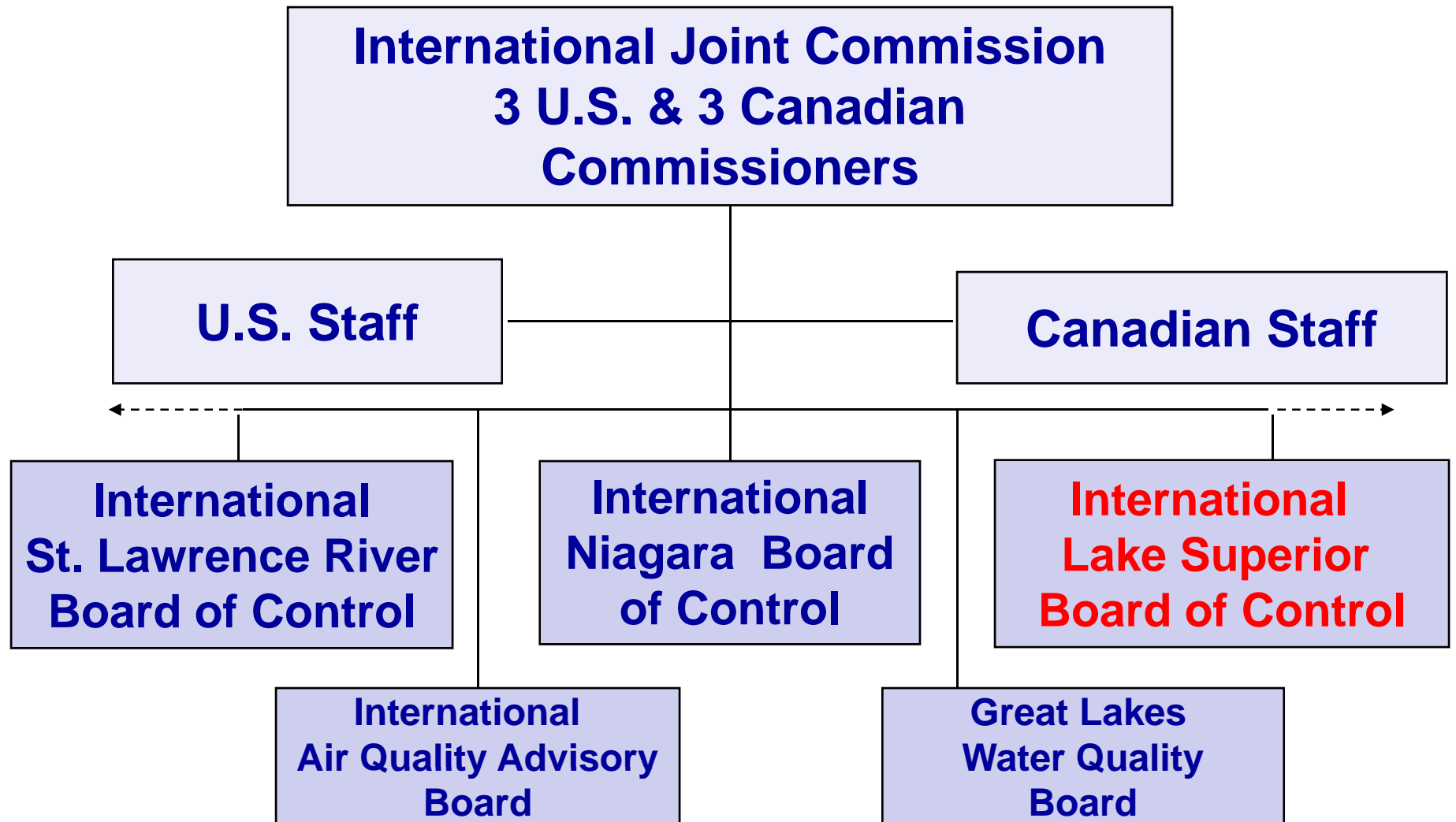
International Lake Superior Board of Control



IJC Responsibilities (cont'd)

- **Authorizes and supervises operations of projects affecting flows and levels in boundary waters**
- **Issues Orders of Approval to implement decisions**
- **Conducts studies for Governments**





International Lake Superior Board of Control

21 August 2013



Orders of Approval

- Issued in 1914 for hydropower development in the St. Marys River in the U.S. and Canada
- Specify method of determining and allocating Lake Superior outflows
- Protect interests in both countries affected by changes in water levels and flows
- Established the International Lake Superior Board of Control

21 August 2013

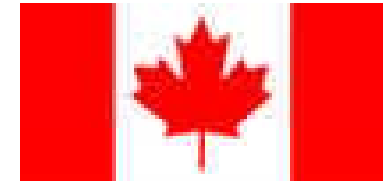
International Lake Superior Board of Control



Updated Orders of Approval (1979)

- Maintain Lake Superior levels between 182.76 to 183.86 m (599.6 to 603.2 ft)
- Attempt to balance levels of Lake Superior and Lake Michigan-Huron
- If Lake Superior's level is below 183.4 m (601.7 ft), do not release more than “pre-project” flow





Board Members

BG Margaret W. Burcham
Alt: COL Bob Peterson

Jaymie Gadal

Board Secretaries

John Kangas

Rob Caldwell

Regulation Representatives

LTC Rob Ells

Jacob Bruxer

Board members and staff serve in a personal and professional capacity and are not representatives of their employers.

21 August 2013

International Lake Superior Board of Control



Board Responsibilities

- Set Lake Superior outflows and allocate water to fisheries, navigation, and hydropower monthly
- Oversee all control works
- Assure accurate reporting of outflows
- Communicate with stakeholders
- Authorize ponding by hydropower
- Special studies



21 August 2013

International Lake Superior Board of Control

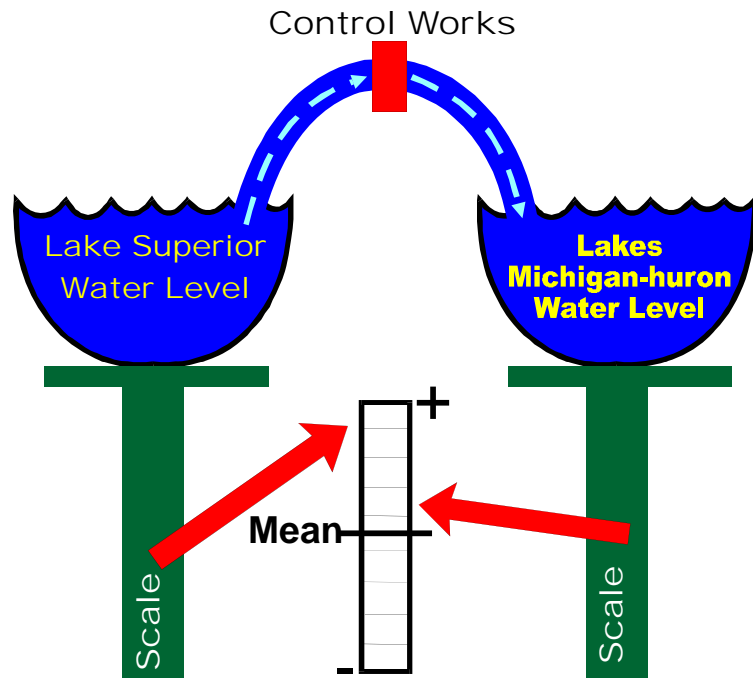


Lake Superior Outflow Regulation

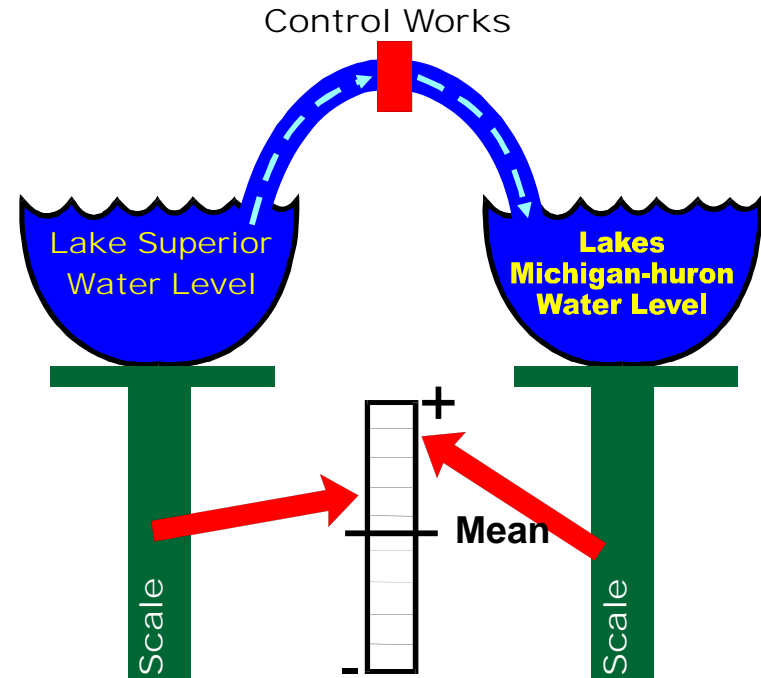
- Outflows are set monthly according to an IJC-approved Regulation Plan
- First Regulation Plan developed in 1916
- Plan 1977-A: Current Regulation Plan
 - Considers levels on Lakes Superior and Michigan-Huron
 - In use since 1990



Regulation Plan 1977-A



Release More Water



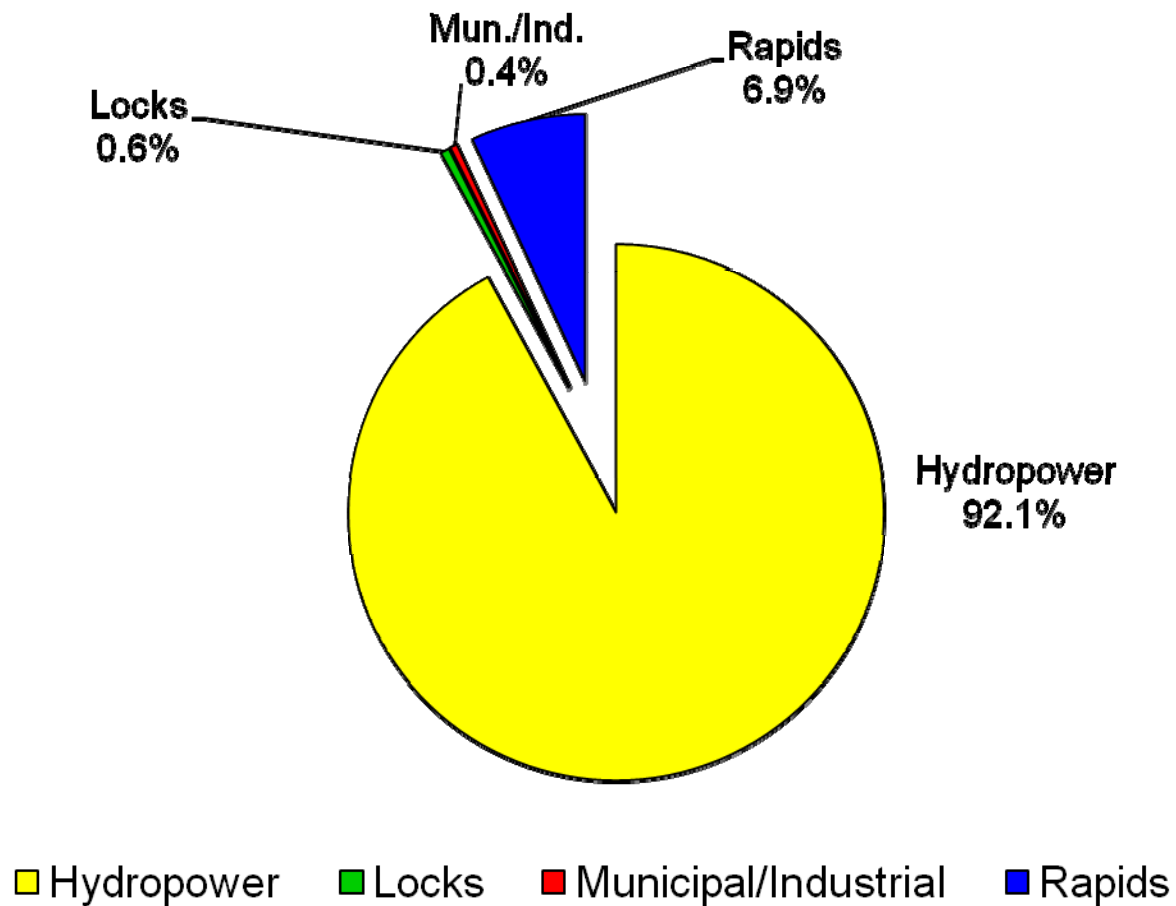
Release Less Water

St. Marys River at Sault Ste. Marie

Looking East (Downstream)



Lake Superior Outflow Water Usage at Sault Ste. Marie (Averages from 1990-2012)



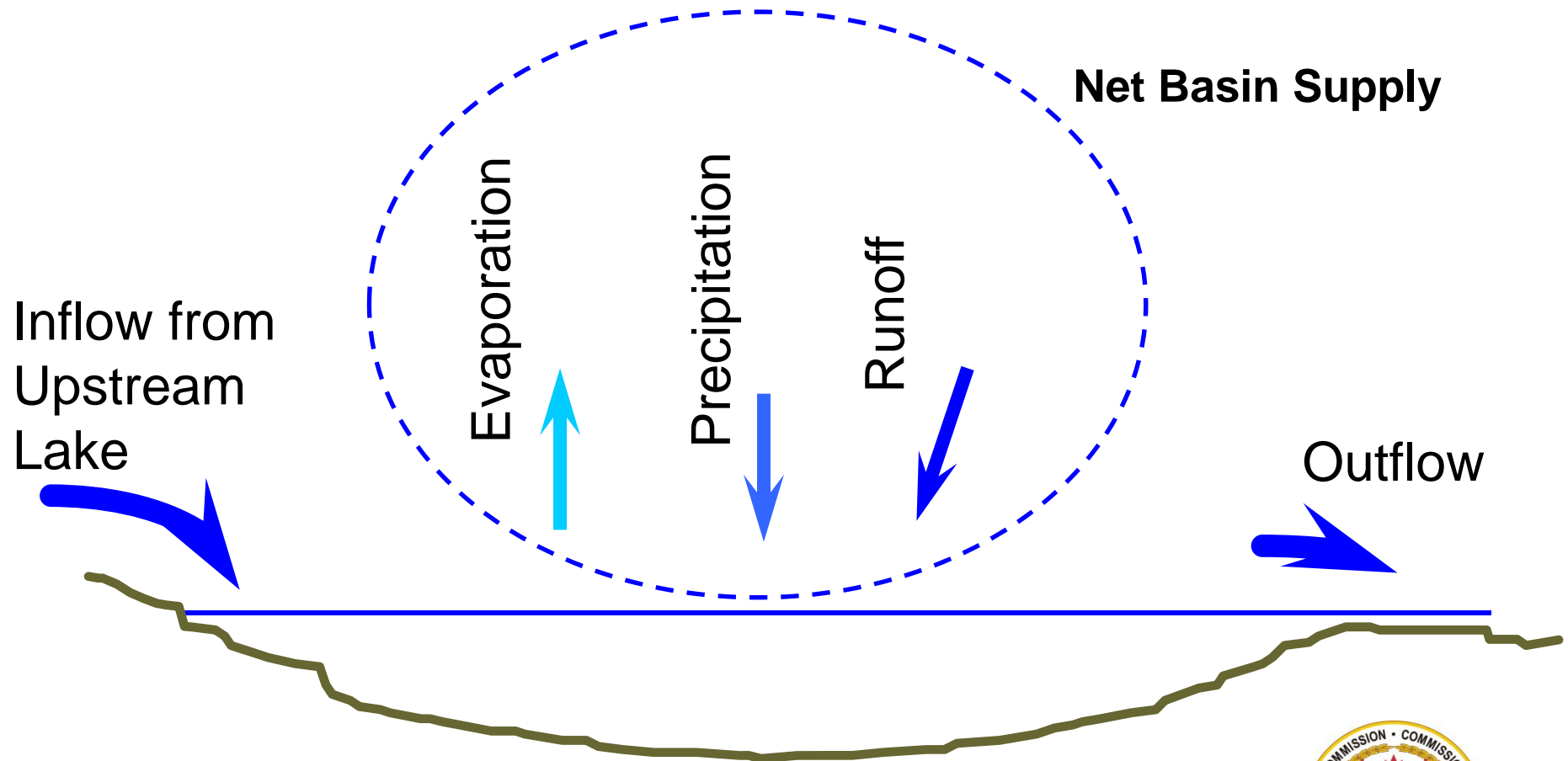
21 August 2013





Great Lakes Water Supplies

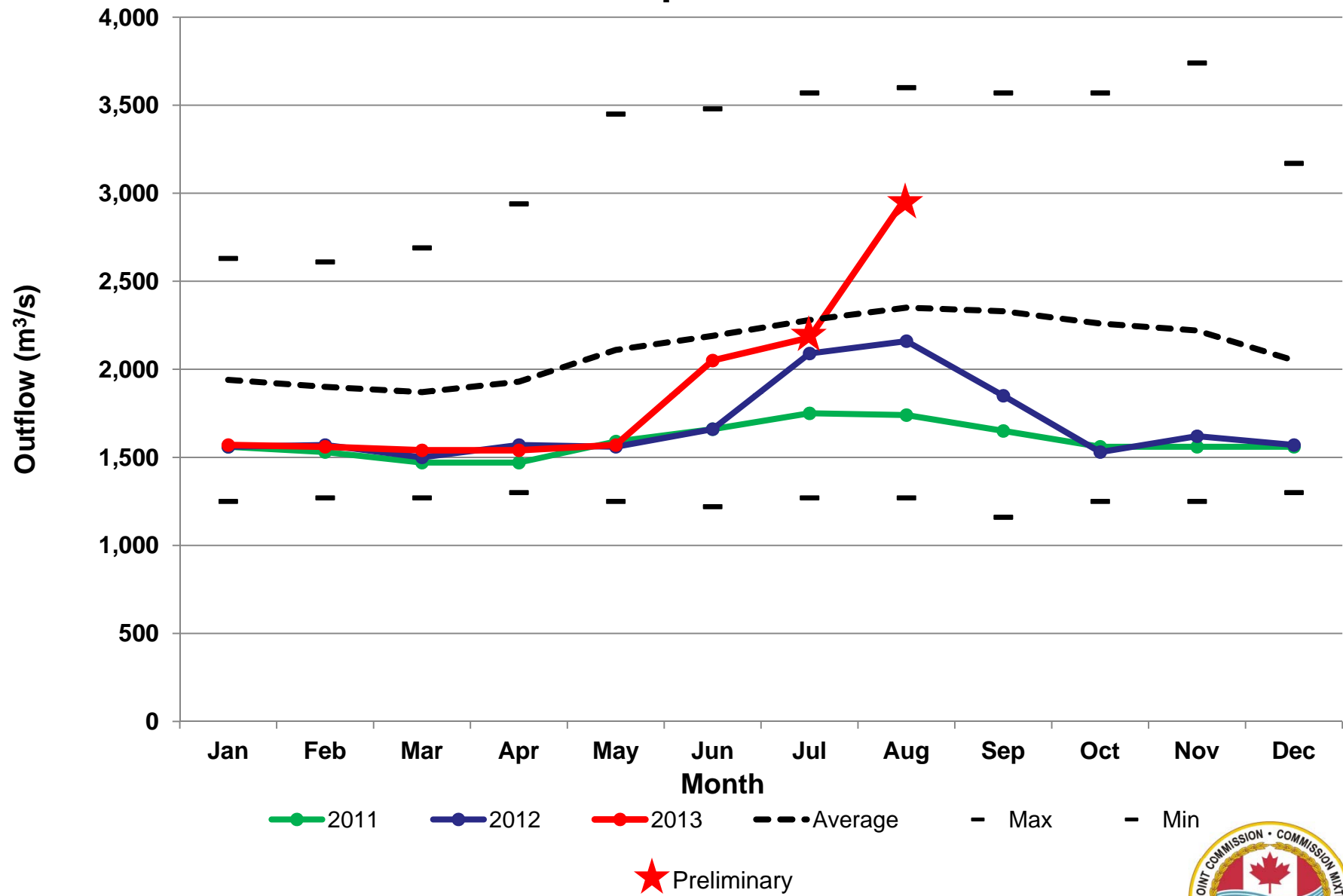
(Factors Affecting Water Levels)



21 August 2013



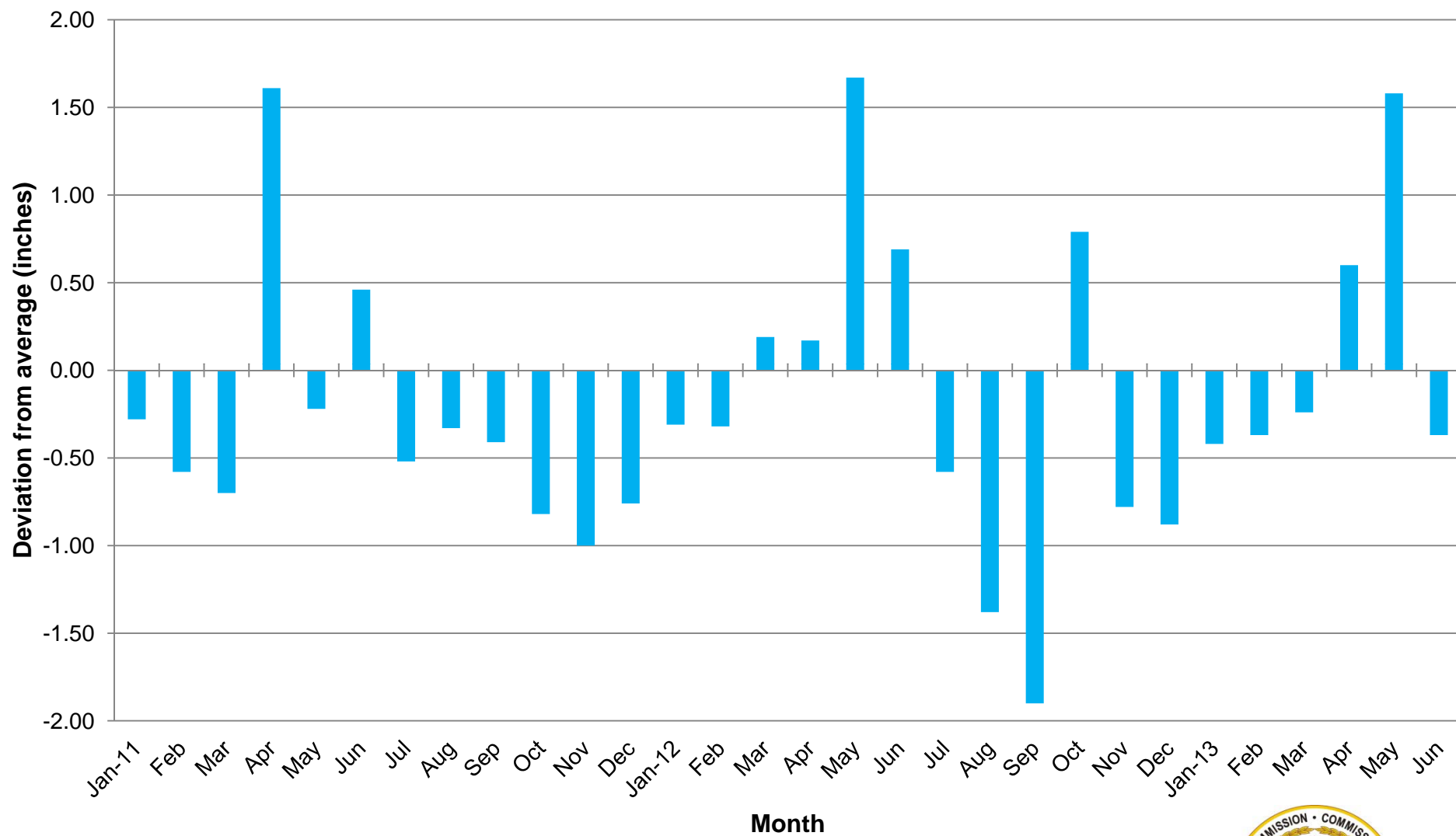
Lake Superior Outflows



21 August 2013



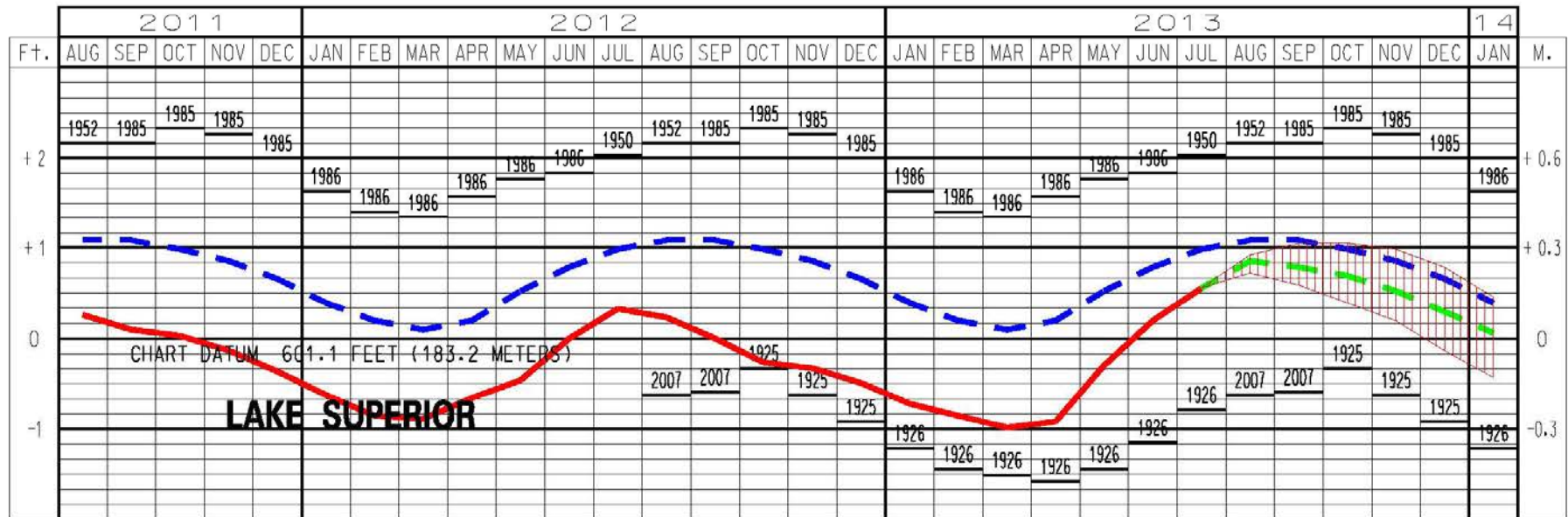
Lake Superior Precipitation



21 August 2013

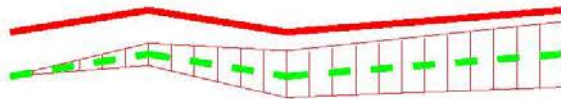


LAKE SUPERIOR WATER LEVELS – AUGUST 2013

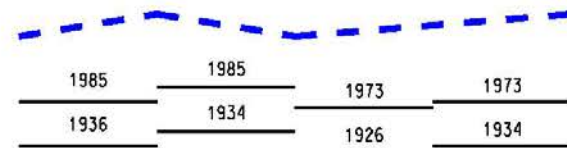


LEGEND LAKE LEVELS

RECORDED
PROJECTED



AVERAGE **
MAXIMUM **
MINIMUM **

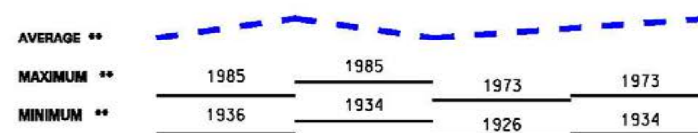
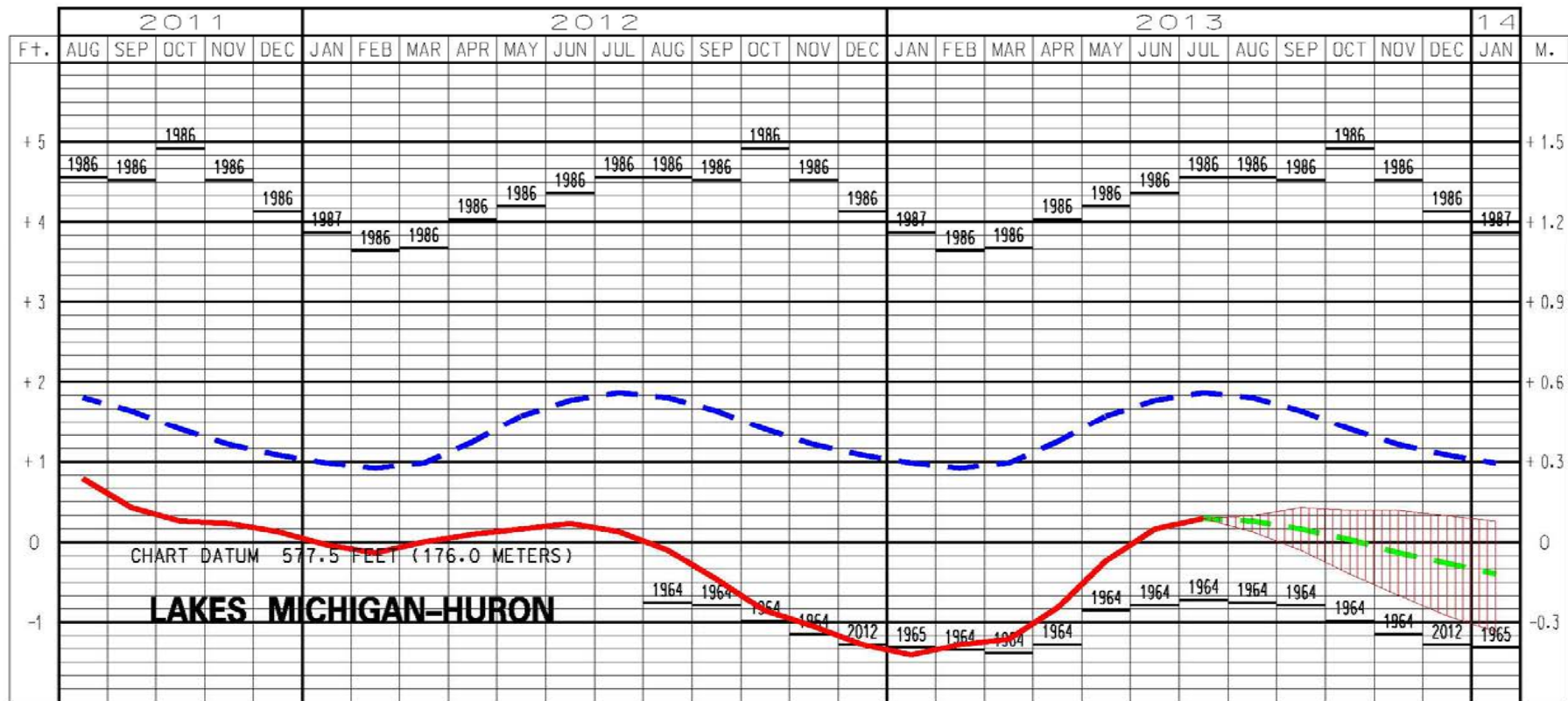


** Average, Maximum and Minimum for period 1918-2012

21 August 2013



LAKES MICHIGAN-HURON WATER LEVELS – AUGUST 2013



** Average, Maximum and Minimum for period 1918-2012



21 August 2013

Study of Gate Movement Rate Limits

- International Watersheds Initiative funding
- Following up on recommendation from IUGLS
- Establish field-verified limits to Compensating Works gate movement rates
- Goal: prevent harm to fish in the St. Marys Rapids due to stranding, flushing of fry, etc.
- Field data collection scheduled for Fall 2013; analysis to follow

21 August 2013



Update to Lake Superior Regulation

- International Upper Great Lakes Study
 - Completed in March 2012
 - Evaluated options to improve rules and criteria governing Lake Superior regulation
 - Recommended adoption of Plan 2012
 - IJC public hearings (2012) showed support for Plan 2012
 - Implementation of Regulation Plan 2012
 - IJC advised the public and governments in April 2013 that we will implement Plan 2012
 - IJC is updating its Order of approval
 - Board staff currently preparing for implementation
- Check www.ijc.org for more info



Comments and Questions?

