

**Public Teleconference
March 15, 2011**

A satellite-style map of the St. Lawrence River region. The river is shown in dark blue/black, winding through a green landscape. Several locations are marked with yellow dots: Burlington, Kingston, Watertown, Oswego, Rochester, and Dorval. The dots for Rochester and Dorval are highlighted with a red and yellow circular border. A yellow text box is overlaid on the bottom right of the map.

Rochester, Dorval and Call-in
1-877-413-4814
4513524 (English)
3606820 (French)
Call between 6:45-6:55pm

March 14, 2011

International St. Lawrence River Board of Control



Regulation of Lake Ontario is possible due to:

- Boundary Waters Treaty of 1909
 - Established the IJC
 - Set order of precedence of interests
- 1952 IJC Order of Approval
 - Approved construction of hydropower projects which allowed outflows to be controlled
- 1956 Supplementary Order
 - Defined criteria consistent with the Treaty
- Plan 1958-D
 - Established method to manage flow from Lake Ontario

International St. Lawrence River Board of Control

March 14, 2011



WATER LEVELS

	Actual*	Compared To	
	13 Mar 2011	March Average**	Last Year
Lake Superior	182.88 m (600.00 ft)	-35 cm (-14 in)	-21 cm (-8 in)
Lake Michigan-Huron	175.81 m (576.80 ft)	-50 cm (-20 in)	-28 cm (-11 in)
Lake Erie	174.04 m (571.00 ft)	-2 cm (-1 in)	-2 cm (-1 in)
Lake Ontario	74.61 m (244.78 ft)	-6 cm (-2 in)	+10 cm (+4 in)
Lake St. Lawrence	73.20m (240.16ft)	+51 cm (+20 in)	+26 cm (+10 in)
Lake St. Louis	21.50 m (70.54 ft)	+16 cm (+6 in)	+39 cm (+15 in)
Montreal Harbour	6.92 m (22.70 ft)	+3 cm (+1 in)	+75 cm (+30 in)

*Preliminary.

**Statistics: Great Lakes: 1918-2010; St. Lawrence River: 1960-2010; Montreal: 1967-2010.

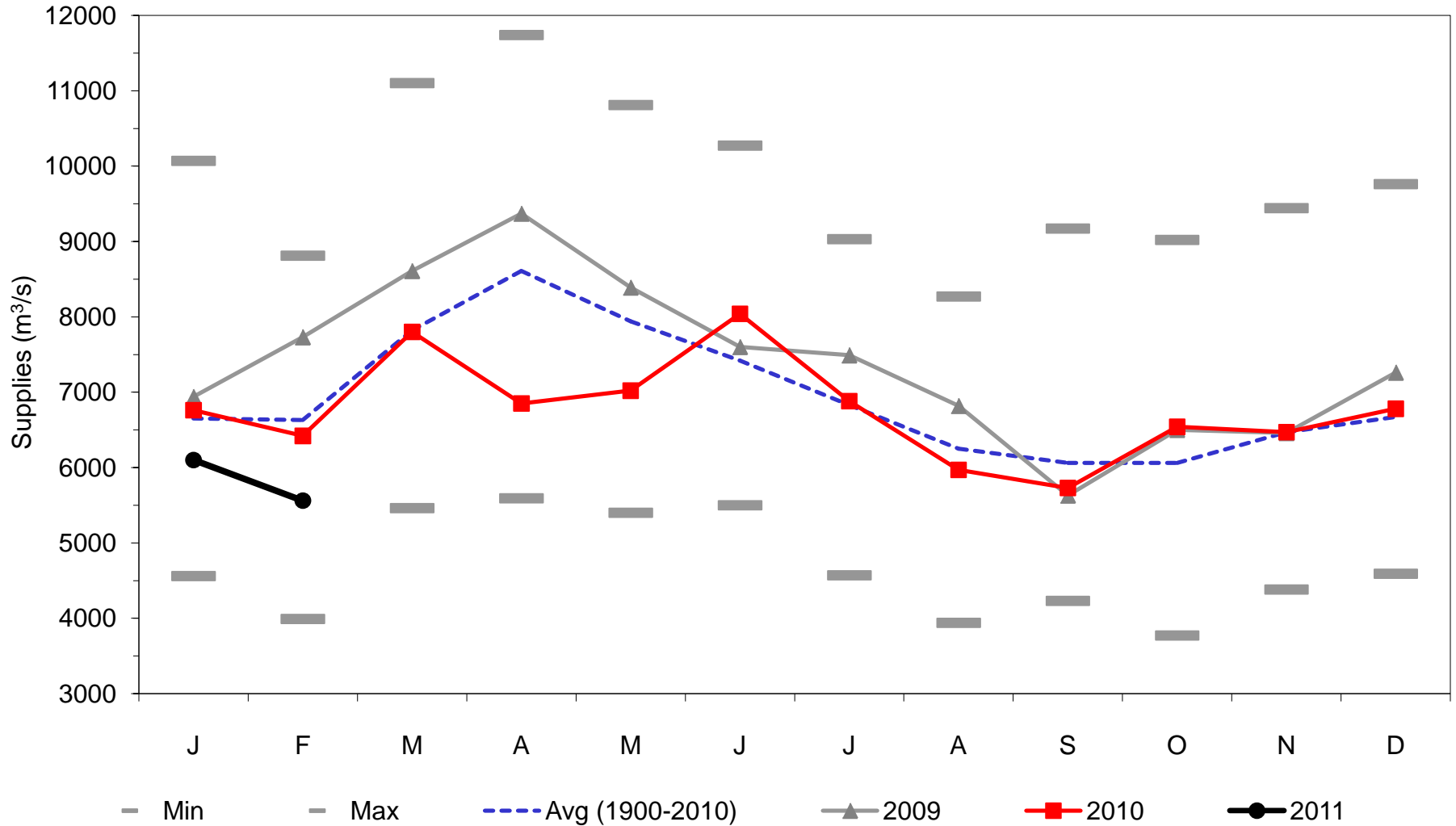
Updated on March 14, 2011

International St. Lawrence River Board of Control

March 14, 2011



Monthly Net Total Supplies to Lake Ontario

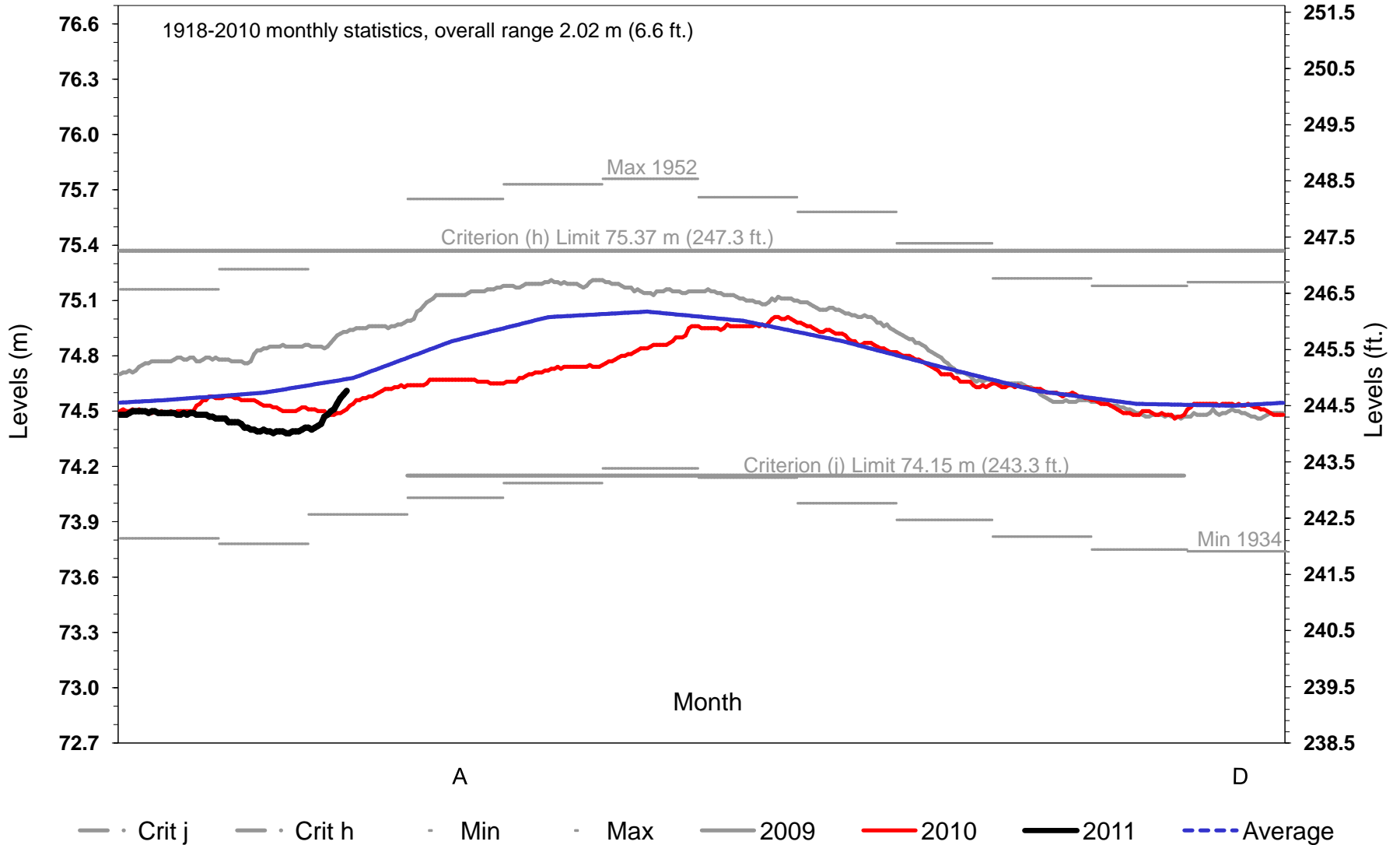


March 14, 2011

International St. Lawrence River Board of Control



Daily Lake Ontario Levels

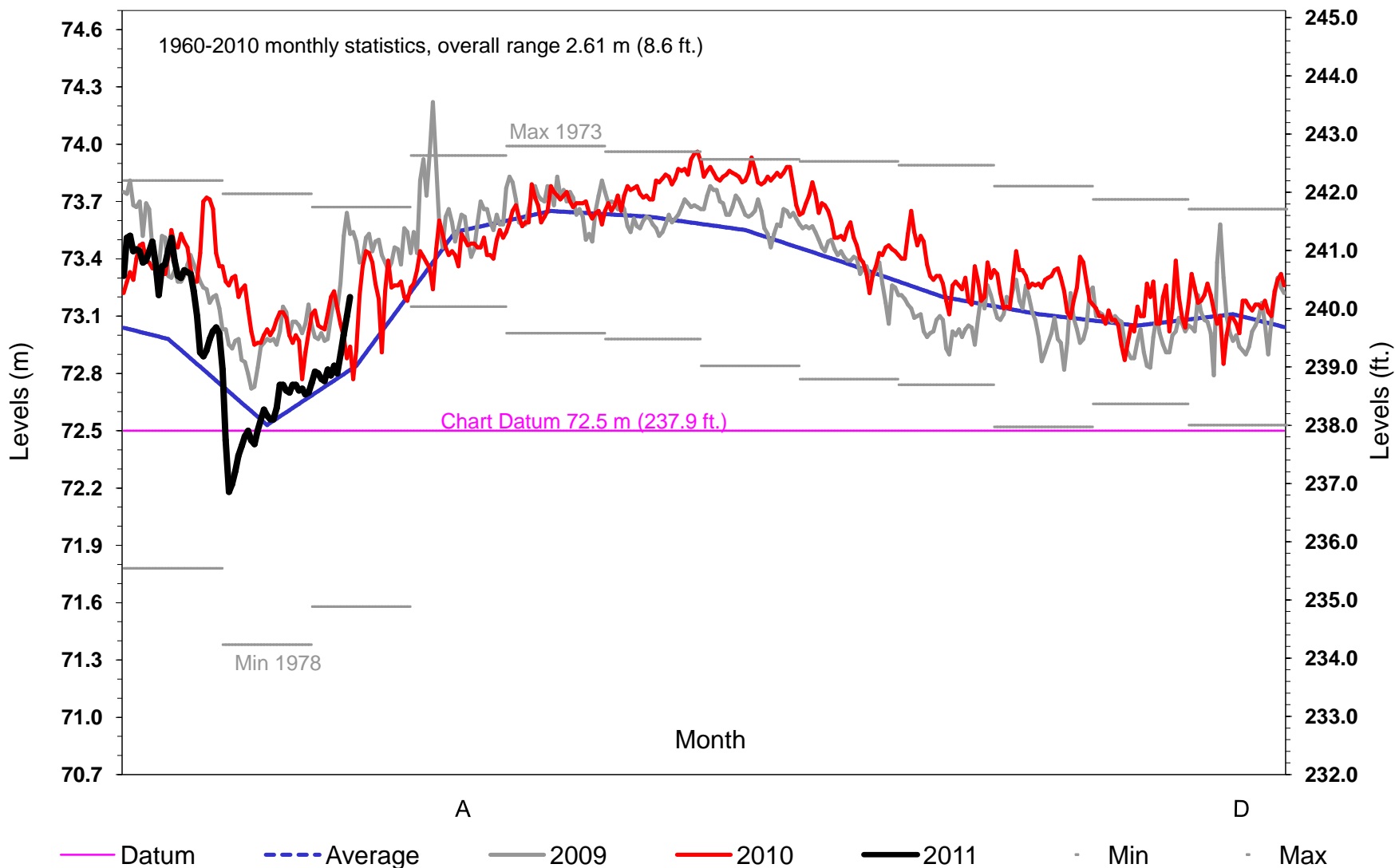


International St. Lawrence River Board of Control

March 14, 2011



Daily Lake St. Lawrence Levels @ Long Sault Dam

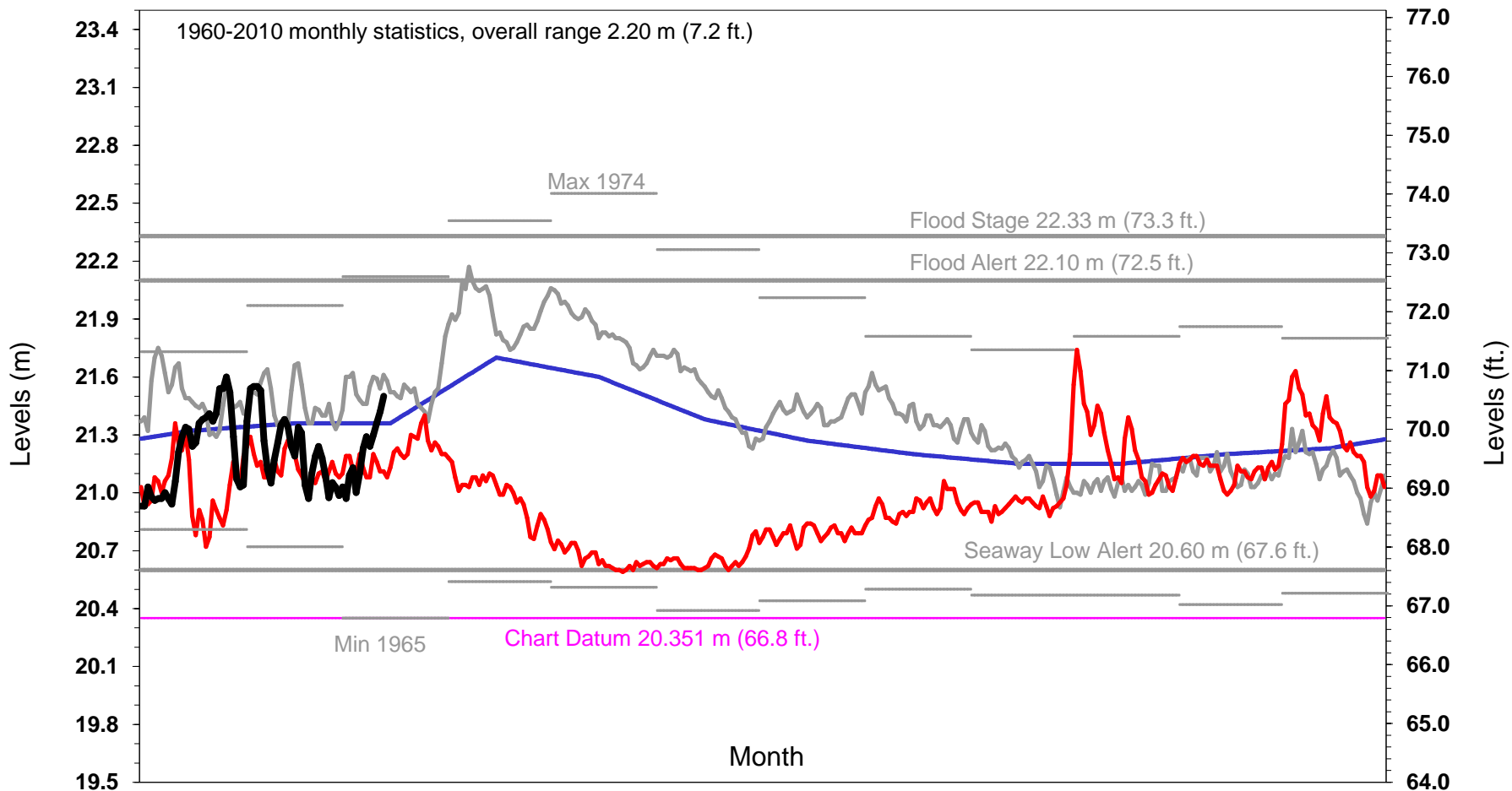


International St. Lawrence River Board of Control

March 14, 2011



Daily Lake St. Louis Levels @ Pointe-Claire



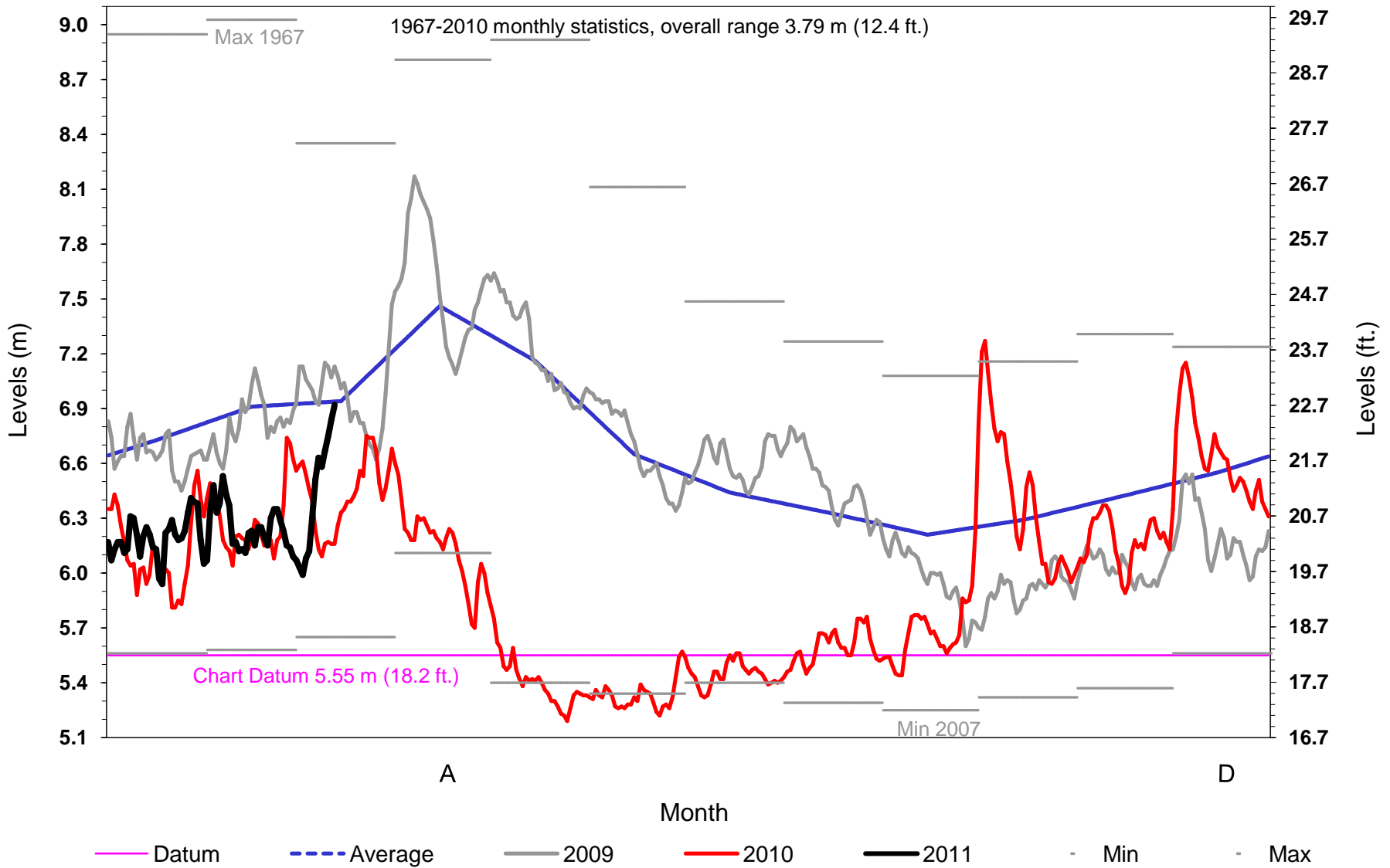
- · Seaway Low Alert — · Flood Alert - - - Flood Stage — Datum - - - Average
- 2009 — 2010 — 2011 · Min · Max

International St. Lawrence River Board of Control

March 14, 2011



Daily Port of Montreal Levels @ Jetty #1

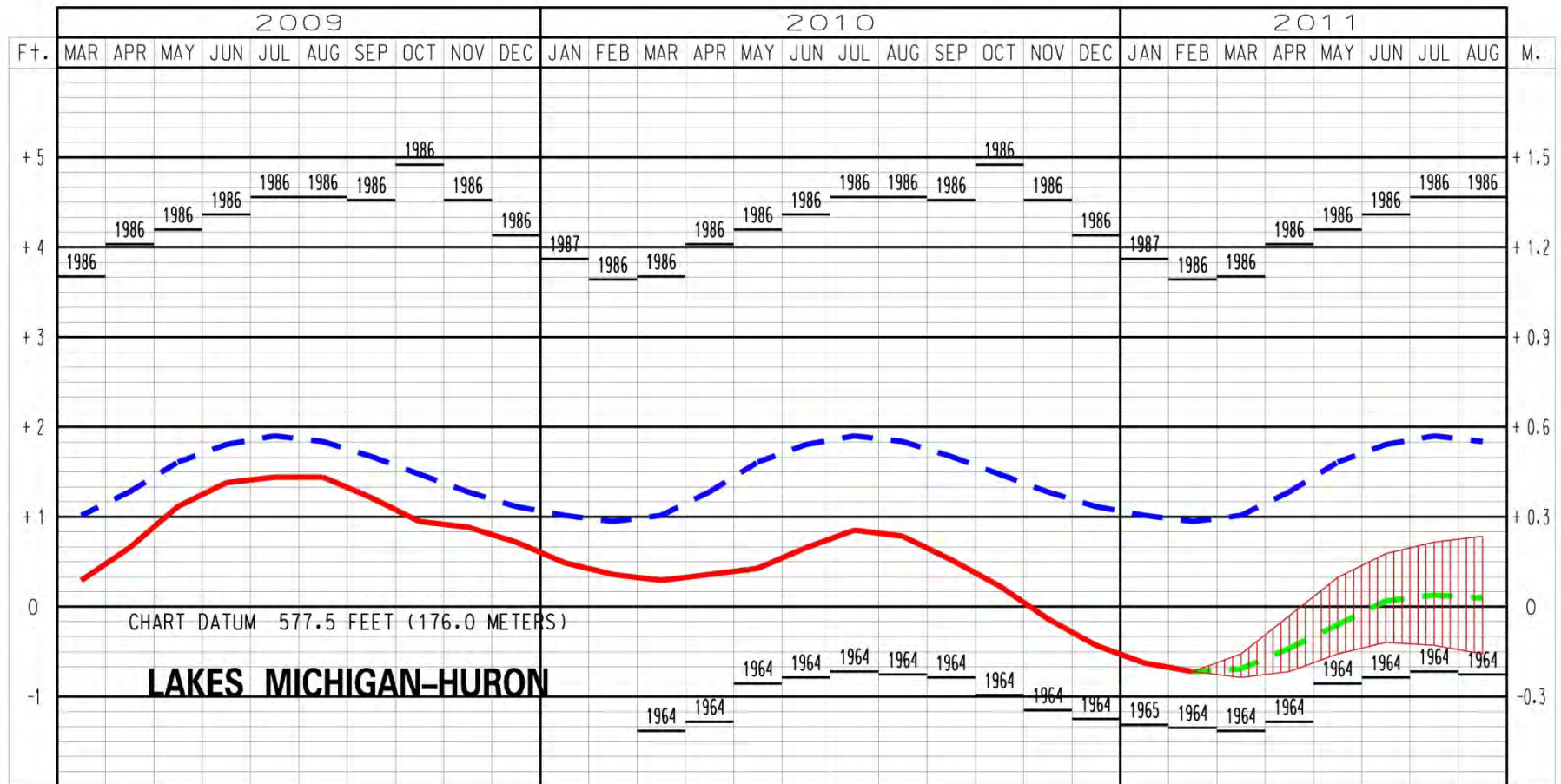


March 14, 2011

International St. Lawrence River Board of Control



LAKES MICHIGAN-HURON WATER LEVELS - MARCH 2011

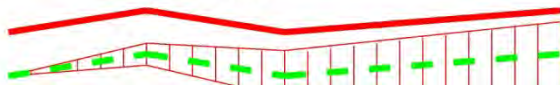


LEGEND

LAKE LEVELS

RECORDED

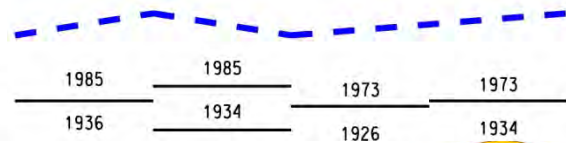
PROJECTED



AVERAGE **

MAXIMUM **

MINIMUM **

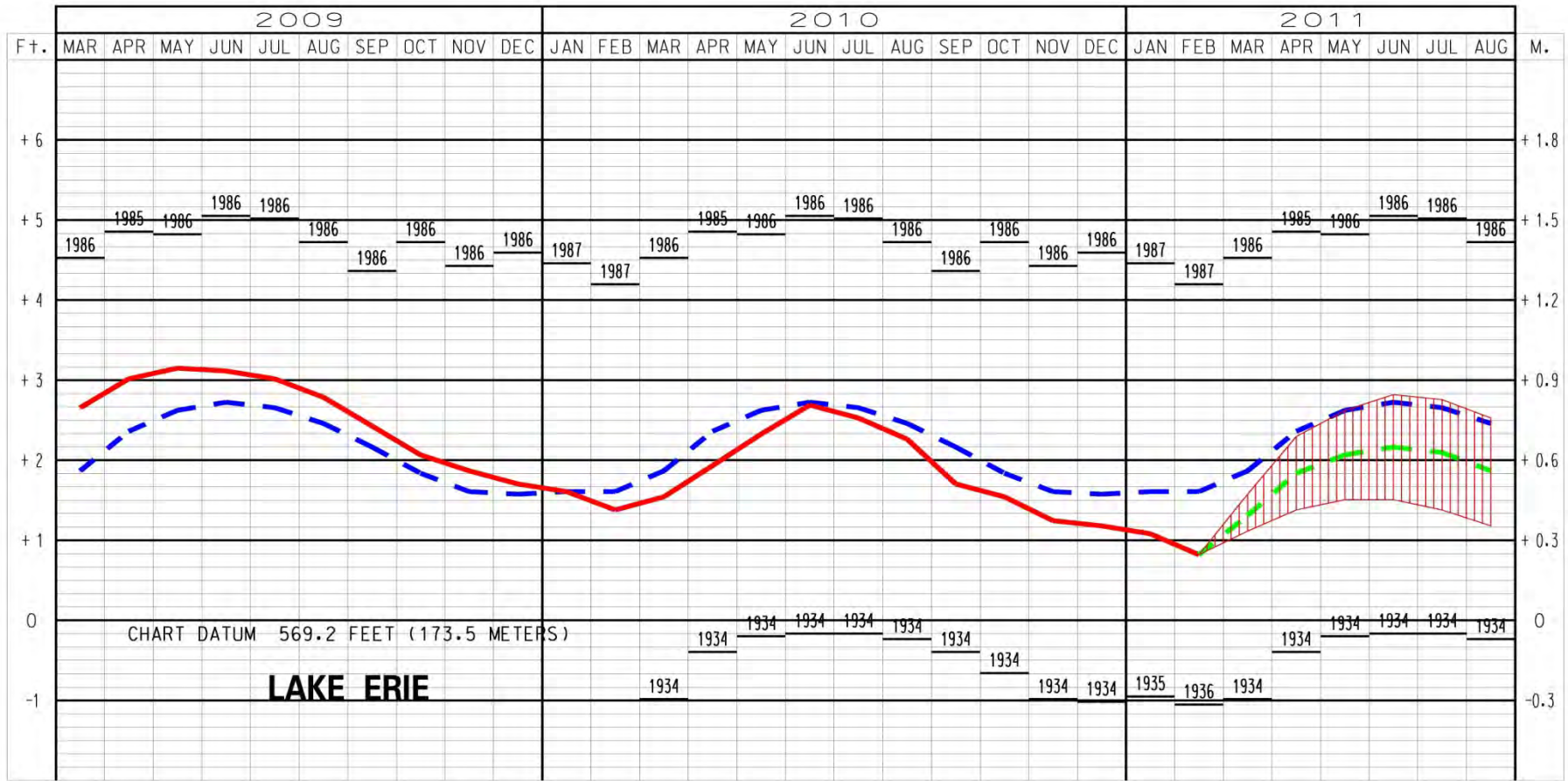


March 14, 2011

International St. Lawrence River Board of Control

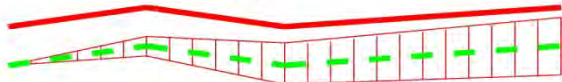


LAKE ERIE WATER LEVELS - MARCH 2011

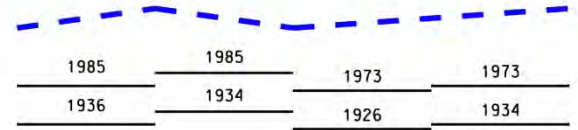


LEGEND LAKE LEVELS

RECORDED
PROJECTED



AVERAGE **
MAXIMUM **
MINIMUM **



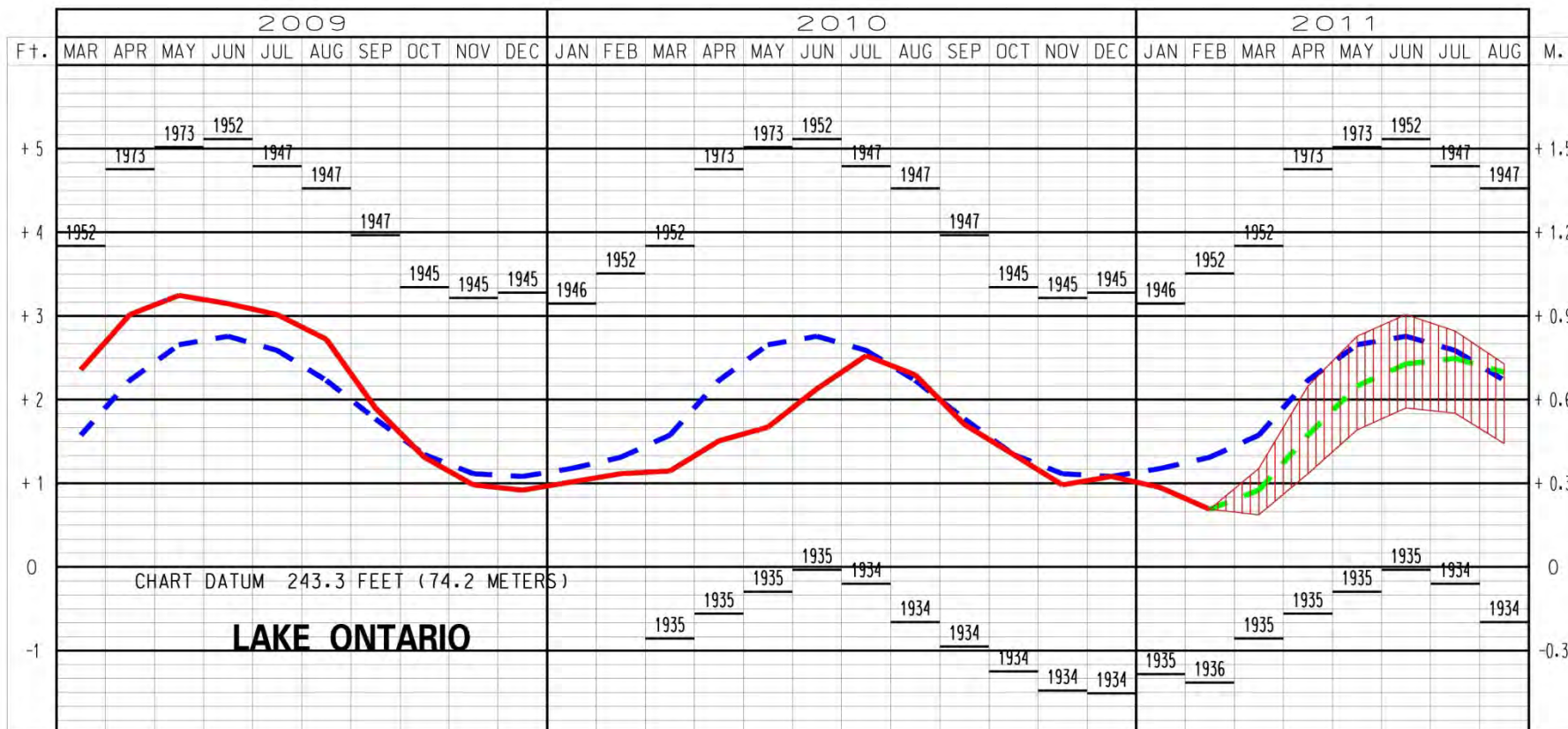
** Average, Maximum and Minimum for period 1918-2010

March 14, 2011

International St. Lawrence River Board of Control



LAKE ONTARIO WATER LEVELS – MARCH 2011



LEGEND

LAKE LEVELS

RECORDED

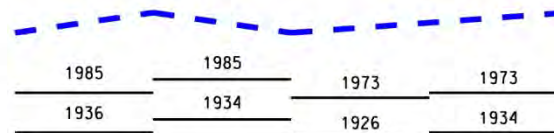
PROJECTED



AVERAGE **

MAXIMUM **

MINIMUM **



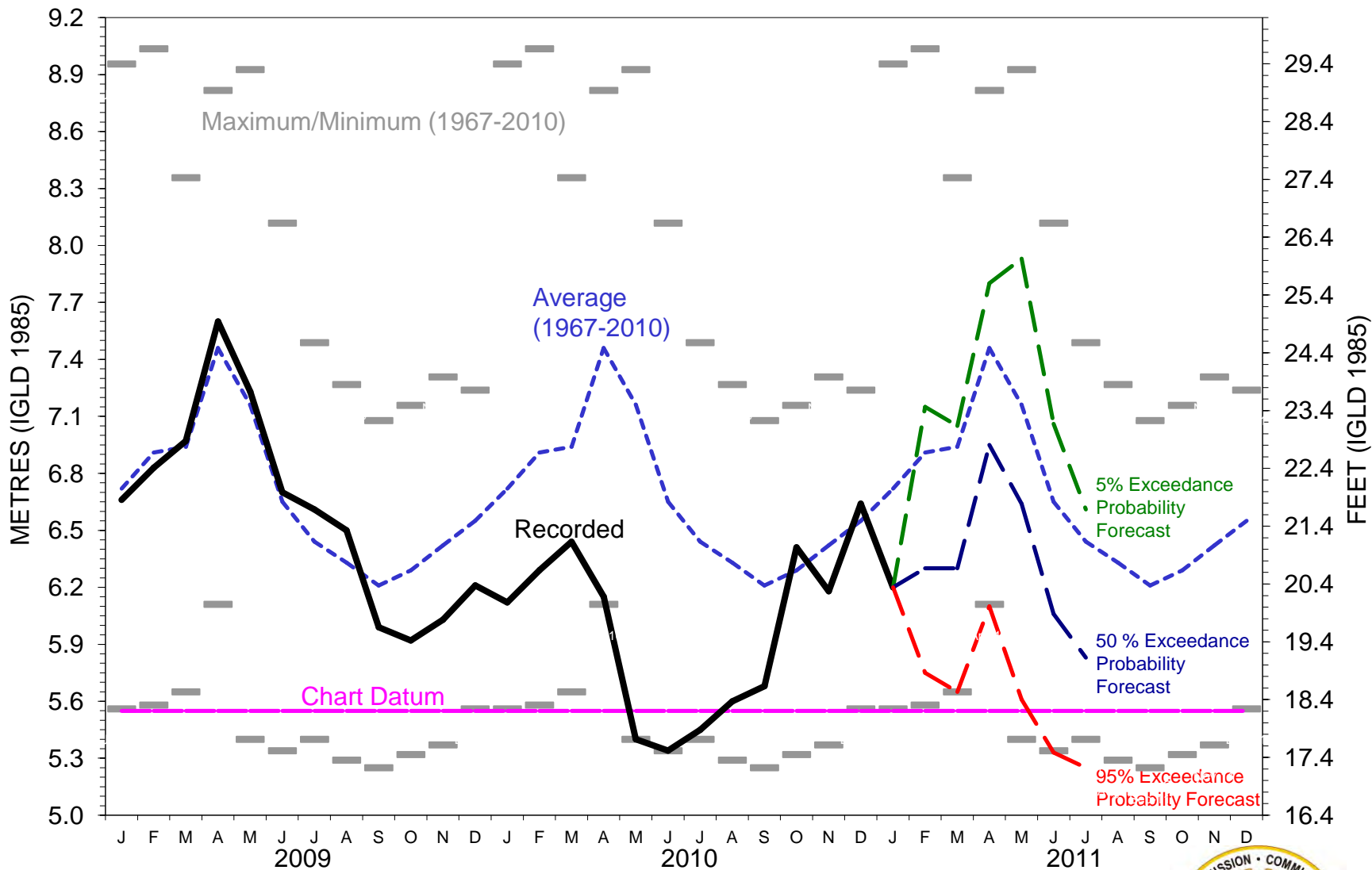
** Average, Maximum and Minimum for period 1918-2010

March 14, 2011

International St. Lawrence River Board of Control



MONTREAL HARBOUR MONTHLY WATER LEVEL FORECAST



International St. Lawrence River Board of Control

March 14, 2011



Current Regulation Strategy

Follow Plan 58-D

- **Allow short-term variations for critical situations**
- **The Board and staff continue to evaluate conditions and take action as necessary**
- **Board to consider strategy in meeting next week**

March 14, 2011

International St. Lawrence River Board of Control



**Public Teleconference
March 15, 2011**

A satellite-style map of the St. Lawrence River region. The river is shown in dark blue/black, winding through a green landscape. Several locations are marked with yellow dots: Burlington, Kingston, Watertown, Oswego, Rochester, and Dorval. The dots for Rochester and Dorval are highlighted with a red and yellow circle. A yellow text box is overlaid on the bottom right of the map.

Rochester, Dorval and Call-in
1-877-413-4814
4513524 (English)
3606820 (French)
Call between 6:45-6:55pm

March 14, 2011

International St. Lawrence River Board of Control

