

ONE HUNDRED AND EIGHTH PROGRESS REPORT
to the
INTERNATIONAL JOINT COMMISSION
by the
INTERNATIONAL ST. LAWRENCE RIVER BOARD OF CONTROL
Covering the Period
MARCH 29, 2007 THROUGH SEPTEMBER 12, 2007

SEPTEMBER 12, 2007

EXECUTIVE SUMMARY

REGULATION STRATEGY AND RESULTS

The Board's strategy during the reporting period was to balance and minimize the impacts of unusually low supplies and levels that persisted throughout the system while continuing to restore as much as possible of the 22.5 cm (8.9 in.) of water that had been removed from Lake Ontario the previous winter to avoid high Lake levels in 2007¹. The Board's actions and a return to more normal supply conditions brought the Lake levels down to about 12 cm (4.7 in.) above average by April but, by mid April there was a growing risk of having low levels downstream by the fall. To mitigate that risk, the Board decided to gradually restore the water that had been removed from the Lake as conditions permitted. That strategy was followed for the remainder of the reporting period. Between mid August and September 12, the restoration efforts were reduced on occasion, and at times suspended, while outflows were augmented to maintain levels in the commercial navigation channels in Lake St. Louis. Levels in Montreal Harbour had also fallen below datum by mid August.

By September 12, 15.3 cm (6. in.) of the water had been restored. Conditions were still very dry, so the Board decided to continue to restore water. The Lake level was well below average and supplies from Lake Erie and the upper lakes were expected to remain below average for the coming months. Low levels in Lake St. Louis and Montreal Harbour were still a concern, so restoration efforts would continue only if and when they could be done without adverse impacts to navigation and other interests. Under this strategy, the end-of-December Lake level was expected to be about 12 cm (4.7 in.) below average and 27 cm (10.6 in.) above the Criterion (j) level.

During the reporting period, the Board also used its discretionary authority to make minor deviations from Plan flow to avoid flooding on Lake St. Louis and spillage at Beauharnois in the spring, reduce outflows during hydropower plant outages, and help free a grounded ship in Montreal Harbour. The augmented outflows in August, to maintain Lake St. Louis levels, were below or at procedural Plan flow until August 28, then were above Plan flow until August 30. Outflows were above Plan flow again between September 10 and 12, to maintain the level on Lake St. Louis. In total, the Board deviated for about 81 percent of the time during the reporting period, of which 86 percent was to restore water to the Lake. The net result of all deviations was to reduce the amount of water removed from the Lake from 22.5 cm (8.9 in.) on March 28 to 7.2 cm (2.8 in.) on September 12. All deviations were achieved without causing appreciable impacts on other interests or violating regulation criteria or other requirements of the Orders.

The net total supplies to Lake Ontario were 96 percent of average for the reporting period, with the monthly net total supplies declining almost steadily from 107 percent of average in March to 86 percent of average in August. The inflow from Lake Erie declined gradually from 108 percent of average in March to 91 percent of average in July and 93 percent of average in August.

On March 29, the level of Lake Ontario was 14 cm (5.5 in.) above average. It peaked on May 1, about six weeks earlier than normal, at 12 cm (4.7 in.) above the long-term average for May. The level remained above average until May 28 then fell below average for the remainder of the

¹ In its March progress report this year, the Board reported that a period of unusually high supplies of water to Lake Ontario lasting from September 2006 through January 2007 prompted the Board to take steps to ensure that the high supplies did not cause problems with high levels later in 2007. In December, the Board began removing water from the Lake by flowing more than specified by the regulation plan and the over-discharges continued until mid March when the risk of high summer levels on the Lake had declined to an acceptable level. By that time, a total of about 22.5 cm of water had been removed from the Lake.

reporting period. On September 12, the level was 18 cm (7.1 in.) below average, 7.2 cm (2.8 in) below the Plan level and 43 cm (16.9 in.) above the Criterion (j) level.

If the Board had not deviated from the Plan to remove water from the Lake last winter, Lake Ontario levels would have been about 20 cm (9 in.) higher in April and May than the actual levels experienced. If there had been no regulation at all, the Lake levels would have been 22 to 37 cm (0.7 to 1.2 ft) higher from March to August and would have exceeded the upper regulation limit (Criterion 'h') from mid April until the first week of June.

Levels on Lake St. Francis were above average until June and below average most of the rest of the period. Levels on Lake St. Louis fluctuated around the average in early April, peaked just below the flood alert level on April 18, then fell below average on May 7, where they remained for most of the remainder of period. Beginning in mid August, the Board maintained Lake St. Louis levels above the Seaway Low Alert by augmenting the outflows from lake Ontario.

Spring levels in Montreal Harbour followed a similar pattern to those on Lake St. Louis, and after the April runoff, the levels remained below average. The daily levels were above chart datum until August 11 when they fell below datum for the remainder of the reporting period. Daily levels were below the previous monthly minimums for several days in August and September.

BOARD ACTIVITIES

The Board continued to adjust its regulation strategy monthly and issue news releases on its strategies and rationale after each major regulation decision. The Regulation Representatives continued to inform and advise the Board on current and expected conditions in the system, including risk assessments. The Operations Advisory Group continued to apprise the Regulation Representatives of operational requirements and constraints.

On September 12, the Board was briefed by the IJC on the Commission's decision-making process regarding future regulation of the Lake Ontario-St. Lawrence River system.

The Board noted the Power Entities' letters to the IJC, dated July 26, 2007, requesting IJC approval to continue Peaking and Ponding operations beyond the expiration of the current approval on October 28, 2007, and the Commission's reply on September 12 approving an extension for one year or until a new approval is issued whichever come first.

COMMUNICATION ACTIVITIES

The Board held its annual meeting with the public in Brockville, Ontario on June 20. The fall teleconference with the public was planned for September 18. Public attendance at the annual meeting in June was average. Feedback from the public was notably positive and supportive of the Board's strategies. Beginning in mid August, the Board began receiving complaints about low levels in both the upper and lower River and criticism of the Board's water restoration strategy.

The Communication Committee continued to provide advice and assistance to the Board in planning and carrying out its communication activities. In August, work on some of the Committee's ongoing initiatives was suspended until communication needs related to the new Order and regulation plan were identified.

TABLE OF CONTENTS

EXECUTIVE SUMMARY	<i>i</i>
TABLE OF CONTENTS	<i>iii</i>
LIST OF FIGURES	<i>iv</i>
LIST OF TABLES	<i>iv</i>
NEWS RELEASES.....	<i>iv</i>
1 HYDROLOGICAL CONDITIONS	1
1.1 Net Basin Supply to the Lake Ontario Basin	1
1.1.1 Precipitation	1
1.1.2 Snow-pack on the Lake Ontario Basin	3
1.2 Supply from Lake Erie.....	4
1.3 Net Total Supply to Lake Ontario	4
1.4 Ottawa River Basin	4
2 REGULATION OF FLOWS & LEVELS	6
2.1 Application of Regulation Plan 1958-D	6
2.2 Board Regulation Strategies and Actions	7
2.2.1 Deviations from Regulation Plan 1958-D	8
2.2.2 Ice Management	10
2.2.3 Iroquois Dam Operations	10
2.3 Results of Regulation	10
2.3.1 Upstream	10
2.3.2 Downstream	12
3 BOARD ACTIVITIES	16
3.1 Board Meetings & Conference Calls	16
3.2 Meetings with the Public and Input from the Public	17
4 COMMUNICATIONS COMMITTEE REPORT.....	17
5 RIVER GAUGING COMMITTEE REPORT	18
5.1 Water Level Gauges.....	19
5.2 Raisin River	19
5.3 Turbine Upgrades.....	19
6 ST. LAWRENCE SEAWAY REPORT	19
7 HYDROPOWER PEAKING & PONDING.....	19
8 BOARD AND COMMITTEE MEMBERSHIP CHANGES	20
 APPENDIX Abbreviations and Terms Used in this Report	 27

LIST OF FIGURES

Figure 1. Great Lakes Drainage Basin - St. Lawrence River System	v
Figure 2. Map of Lake Ontario-St. Lawrence River System	v
Figure 3. Map of Upper St. Lawrence River Control Structures	vi
Figure 4. Factors affecting the Level of Lake Ontario	vi
Figure 5. Net Basin Supply to Lake Ontario	2
Figure 6. Precipitation Over Lake Ontario Basin	3
Figure 7. Supply from Lake Erie (Niagara River Flow)	4
Figure 8. Net Total Supply to Lake Ontario	5
Figure 9. Lake Ontario Average & Recorded Net Total Six-Month Supplies	6
Figure 10. Lake Ontario Daily Outflows	9
Figure 11. Water Level on Lake Ontario	11
Figure 12a. Lake Ontario Actual, Pre-project & Plan Levels	12
Figure 12b. Lake Ontario Actual, Pre-project & Plan Levels for June 2006 thru June 2007	13
Figure 13. Water Level on Lake St. Lawrence (at Long Sault Dam)	13
Figure 14. Water Level on Lake St. Francis (at Summerstown)	14
Figure 15. Water Level on Lake St Louis (at Pointe-Claire)	15
Figure 16. Water Level in the Port of Montreal (at Jetty #1)	15

LIST OF TABLES

Table 1. Monthly Mean Supplies to Lake Ontario	2
Table 2. Precipitation Over the Lake Ontario and Great Lakes Basins	3
Table 3. Average and Recorded Six-Month Net Total Supplies (March -August)	5
Table 4. Summary of Outflow Deviations from Regulation Plan 1958-D Outflow	9
Table 5. Lake Ontario Recorded and Pre-Project Levels and Outflows	11
Table 6. Attendance at Meetings and Teleconferences	16

NEWS RELEASES

April 4, 2007	22
April 24, 2007	22
May 11, 2007	23
June 25, 2007	24
August 14, 2007	25
September 17, 2007	26

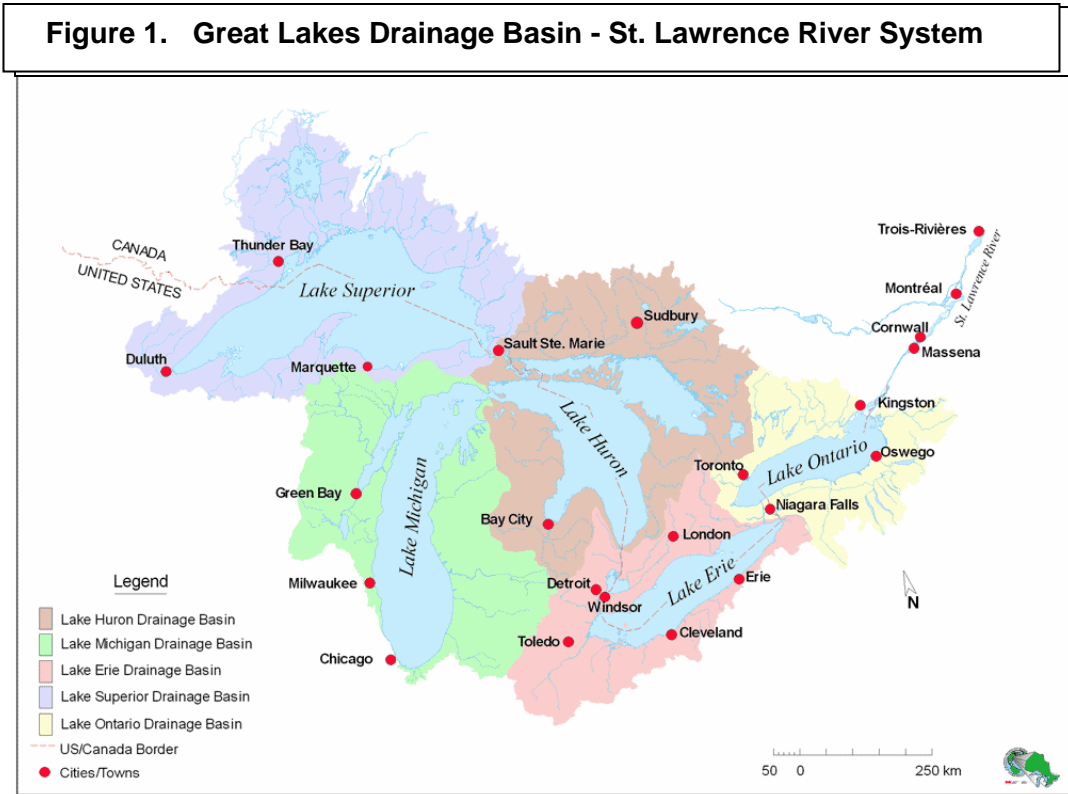


Figure 2. Map of Lake Ontario-St. Lawrence River System

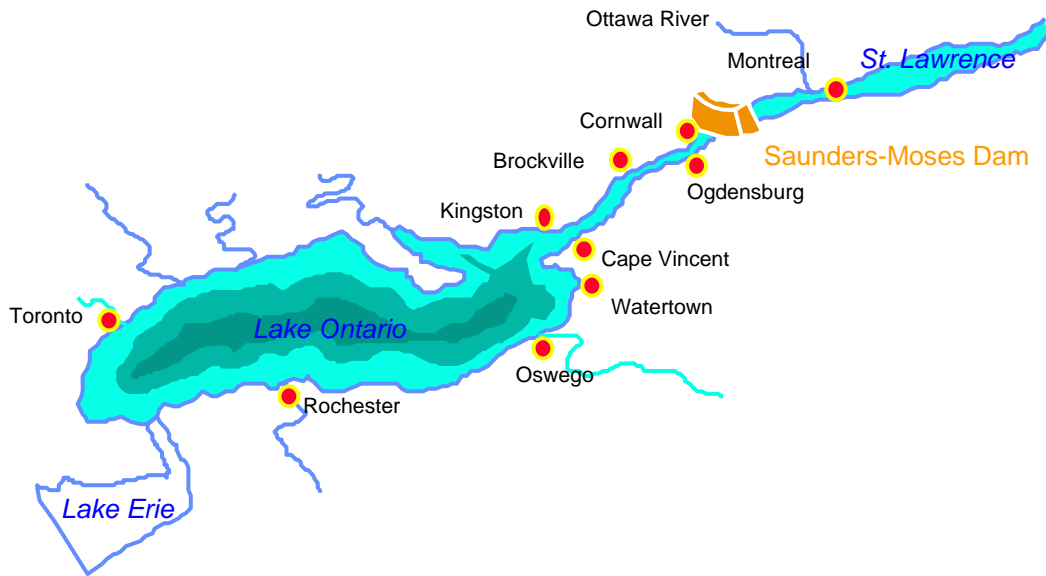


Figure 3. Map of Upper St. Lawrence River Control Structures

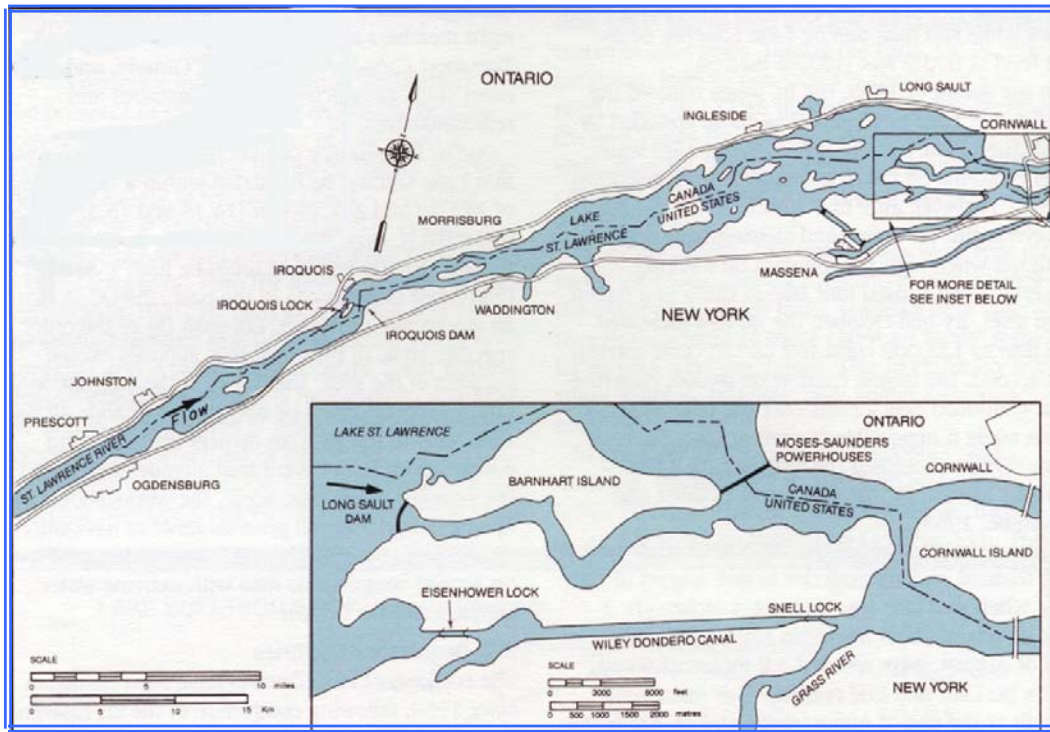
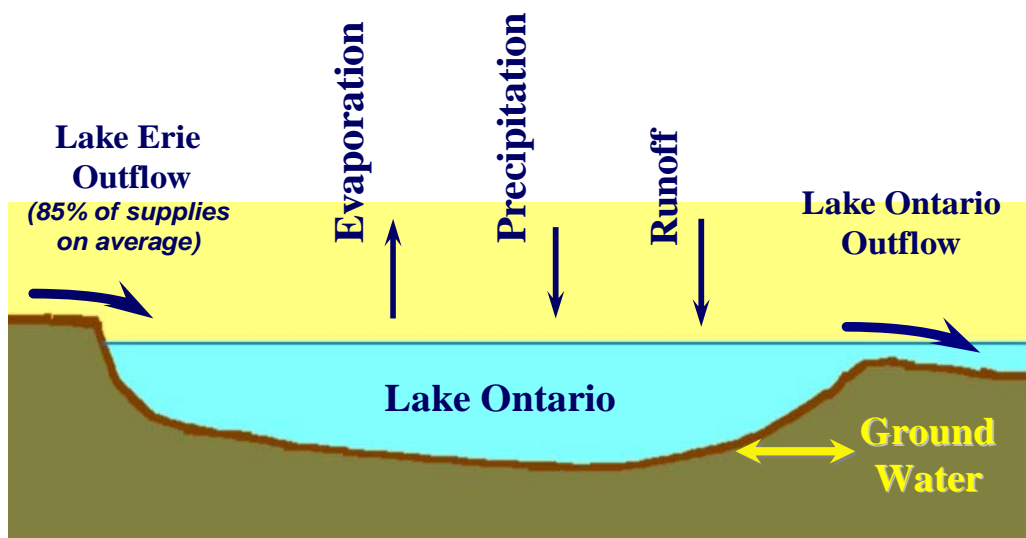


Figure 4. Factors Affecting the Level of Lake Ontario



1 HYDROLOGICAL CONDITIONS

Lake Ontario is the furthest downstream of the five Great Lakes. It receives the outflow of Lakes Superior, Michigan, Huron and Erie (Figure 1). From a long-term perspective, about 85 percent of the water received by Lake Ontario comes from the upstream Great Lakes. Lake Ontario outflows are controlled at a location about 160 kilometres (100 miles) from the Lake (Figure 2), with almost all of the water going through the Moses-Saunders powerhouse. Prior to construction of the powerhouse and navigation locks (Figure 3), the flow out of Lake Ontario was controlled by a series of rapids that began about 110 kilometres (70 miles) downstream of the Lake, near the towns of Ogdensburg, New York and Prescott, Ontario.

Water supply to Lake Ontario is composed of four main factors (Figure 4): inflow from Lake Erie through the Niagara River and Welland Canal diversion, precipitation on the surface of the Lake, runoff from streams and groundwater flowing into the Lake and evaporation of water from the Lake. In addition, water for consumptive use is taken from the Lake.

In this report, supplies to Lake Ontario are reported in terms of Net Basin Supplies and Net Total Supplies. The definitions of these terms are as follows:

The Net Basin Supply is the net of the amount of precipitation over the Lake, runoff to the Lake, including groundwater, and evaporation and consumptive uses from the Lake's surface. Precipitation and runoff are estimated by measurements but it is not possible to accurately measure evaporation and consumptive uses. Therefore, the Net Basin Supply is estimated as the difference between the Lake's outflow down the St. Lawrence River and inflow from Lake Erie, plus any change in storage within the Lake itself as a result of a rise or fall in the Lake's level. An indicator of the amount of spring runoff that may be expected is obtained by monitoring the snow pack in the basin.

The Net Total Supply is obtained by adding to the Net Basin Supply the inflows from Lake Erie through the Niagara River and Welland Canal. The Niagara River flow is computed using a stage-discharge relationship for the Niagara River below Niagara Falls and adding the flow through the hydropower turbines located along the Niagara River.

1.1 Net Basin Supply to the Lake Ontario Basin

The monthly local net basin supplies for March through August 2007 are provided in Table 1 and shown on Figure 5. Figure 5 also shows the long-term average monthly net basin supplies, and supplies for 2005 and 2006. The horizontal bars above and below the plots are the recorded maximum and minimum long-term monthly net basin supplies.

The monthly net basin supplies were slightly above average in March and April, and overall, below average for the remainder of the reporting period. The cumulative net basin supply for the 6-month period had an exceedence probability of about 63 percent.

1.1.1 Precipitation

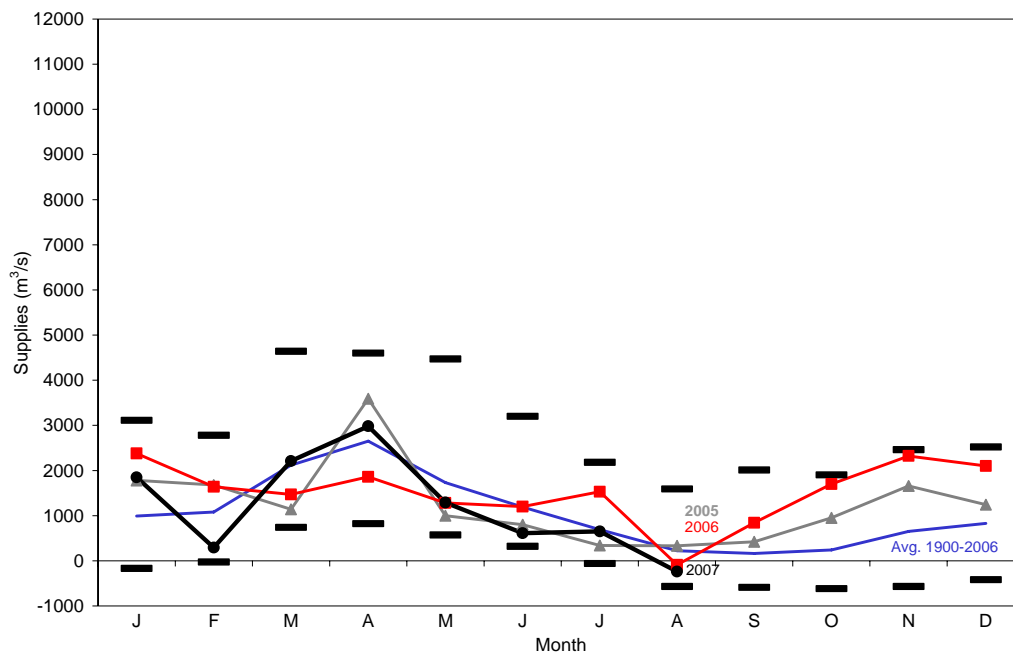
Monthly precipitation amounts for the Lake Ontario and Great Lakes basins for March through August 2007 are provided in Table 2 and shown on Figure 6. Figure 6 also shows the long-term average, maxima and minima, and precipitation for 2005 and 2006.

Table 1. Monthly Mean Supplies to Lake Ontario

2007	Inflow from Lake Erie			Local Net Basin supplies		Total Supplies		
	m ³ /s (tcfs)	Exceed Prob. ⁽¹⁾	Percent of LTA ⁽¹⁾	m ³ /s (tcfs)	Exceed Prob. ⁽¹⁾	m ³ /s (tcfs)	Exceed Prob. ⁽¹⁾	Percent of LTA ⁽¹⁾
Mar	6130 (216)	26	108	2210 (78)	42	8340 (295)	31	107
Apr	6140 (217)	38	103	2980 (105)	34	9120 (322)	34	106
May	6280 (222)	46	101	1290 (46)	73	7570 (267)	61	95
Jun	5840 (206)	72	94	610 (22)	89	6450 (228)	84	87
Jul	5580 (197)	81	91	650 (23)	51	6230 (220)	76	91
Aug	5630 (199)	74	93	-240 (-8)	92	5390 (190)	87	86

⁽¹⁾ Based on period of record 1900-2006

Figure 5. Net Basin Supply to Lake Ontario



Monthly precipitation in the Lake Ontario basin was below average throughout the reporting period, and near the record low in August. The total amount of precipitation received in the basin over the 6-month period was 323 mm (12.7 in.), which was about 71 percent of average and had an exceedence probability of about 99 percent.

By comparison, 405 mm (15.9 in.) of precipitation fell in the entire Great Lakes basin, which was about 93 percent of average and had an exceedence probability of about 75 percent.

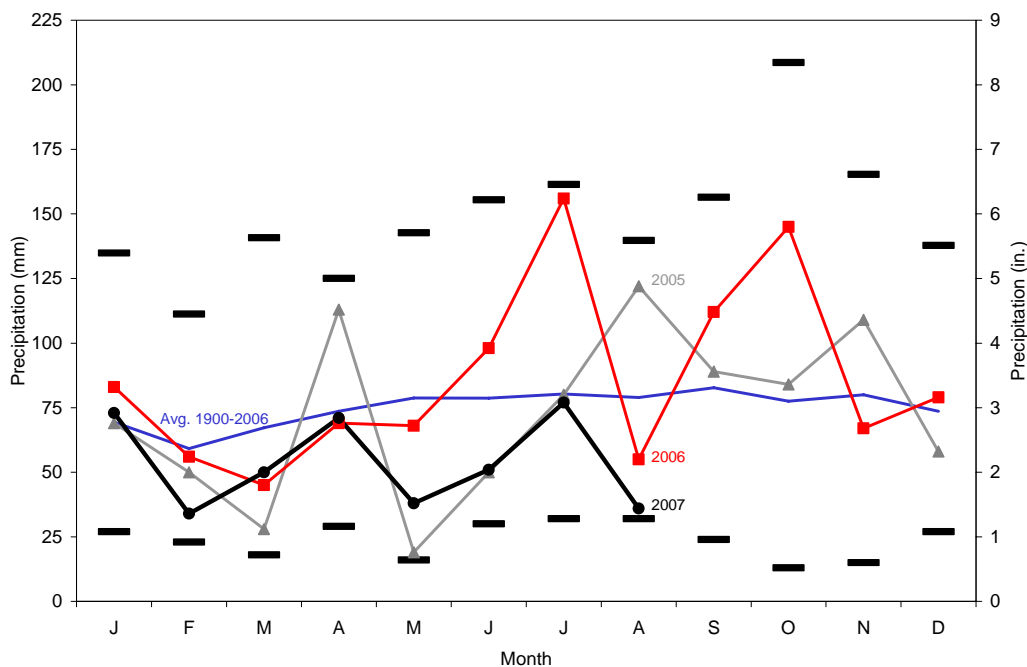
Table 2. Precipitation over the Lake Ontario and Great Lakes Basins

2007	Great Lakes Basin			Lake Ontario Basin		
	mm (inches)	Percent of LTA ⁽¹⁾	Exceed. Prob. ⁽²⁾	mm (inches)	Percent of LTA ⁽¹⁾	Exceed. Prob. ⁽²⁾
Mar	61 (2.41)	111	34	50 (1.98)	75	79
Apr	69 (2.71)	108	38	71 (2.79)	96	52
May	52 (2.06)	68	88	38 (1.50)	48	92
Jun	70 (2.74)	86	68	51 (2.00)	65	82
Jul	74 (2.90)	92	62	77 (3.05)	96	51
Aug	79 (3.10)	99	52	36 (1.43)	46	98

⁽¹⁾ Based on period of record 1900-2006

⁽²⁾ Based on period of record 1900-1999

Figure 6. Precipitation over Lake Ontario Basin

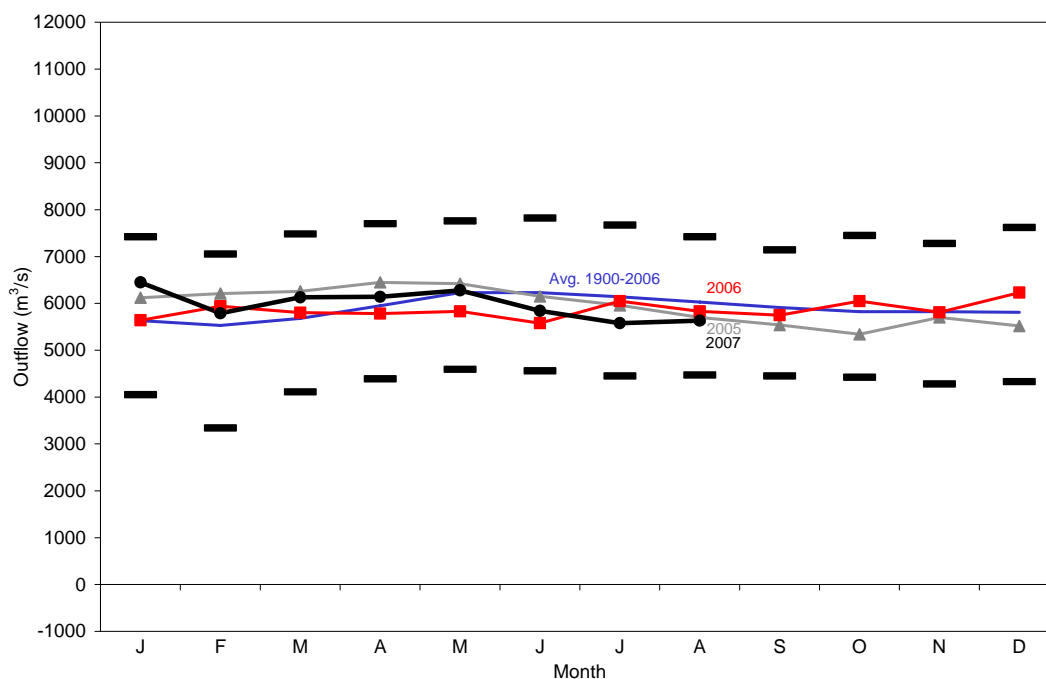


1.1.2 Snow-pack on the Lake Ontario Basin

There was virtually no snow pack left on the Lake Ontario basin by the start of the reporting period on March 29, except at the extreme eastern end.

1.2 Supply from Lake Erie

Inflows to Lake Ontario through the Niagara River from Lake Erie during the reporting period are provided in Table 1 and shown in Figure 7. Figure 7 also shows the long-term average, maxima and minima, and inflows for 2005 and 2006. Inflows from Lake Erie were above average in March and April, near average in May and below average for the remainder of the reporting period. The total inflow for the 6-month period was 98 percent of average and had an exceedence probability of about 56 percent.

Figure 7. Supply from Lake Erie (Niagara River Flow)

1.3 Net Total Supply to Lake Ontario

The monthly net total supplies to Lake Ontario for the March through August 2007 period are provided in Table 1 and shown in Figure 8. Figure 8 also shows the long-term average, maxima and minima, and supplies for 2005 and 2006. For comparison purposes, net total supplies for March through August for 1998 through 2007 are provided in Table 3 and Figure 9

The monthly net total supplies were above average in March and April and below average for the remainder of the reporting period. The net total supply for the entire 6-month period was about 96 percent of the average and had an exceedence probability of 63 percent.

1.4 Ottawa River Basin

Outflows from the Ottawa River were near average during March. By March 29, there was almost no snow pack left on the Ottawa River basin and outflows were below average from April until the second week of June. Heavy rainfall in mid June caused outflows to rise sharply above average for several days. A second period of heavy rainfall in the latter half of July resulted in above-average outflows again for a few days. Outflows then fell to near record low values during the dry period that followed. The lower-than-average inflows from the Ottawa River into Lake St. Louis, combined with low Lake Ontario flows, resulted in the level of Lake St. Louis declining beginning in mid-June.

Figure 8. Net Total Supply to Lake Ontario

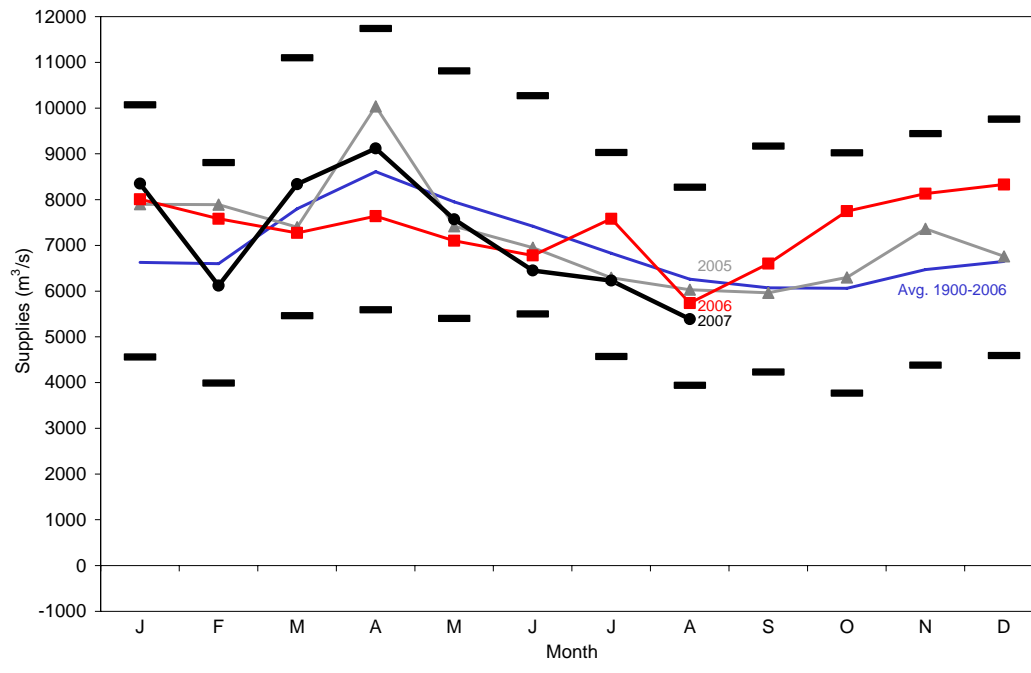
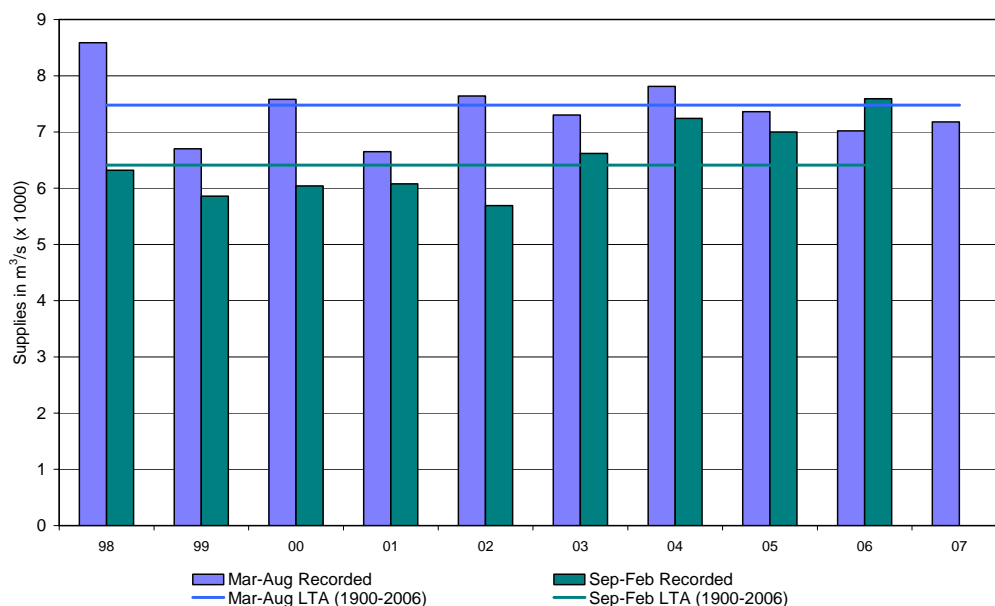


Table 3. Average and Recorded Six-Month Supplies (Mar-Aug)

	Long-Term Average ⁽¹⁾		Recorded			Recorded Below (-) or Above Average (+)		
	(m ³ /s)	(tcfs)	(m ³ /s)	(tcfs)	Exceed. Prob. ⁽¹⁾	(m ³ /s)	(tcfs)	Percent
Mar-Aug 98	7480	264	8590	303	10	1110	39	15
Mar-Aug 99	7480	264	6700	237	81	-780	-28	-10
Mar-Aug 00	7480	264	7580	268	45	100	4	1
Mar-Aug 01	7480	264	6650	235	83	-830	-29	-11
Mar-Aug 02	7480	264	7640	270	42	160	6	2
Mar-Aug 03	7480	264	7300	258	58	-180	-6	2
Mar-Aug 04	7480	264	7810	276	36	330	12	-2
Mar-Aug 05	7480	264	7360	260	55	-120	-4	4
Mar-Aug 06	7480	264	7020	248	70	-460	-16	-6
Mar-Aug 07	7480	264	7180	254	63	-300	-11	-4

⁽¹⁾ Based on period of record 1900-2006

Figure 9. Lake Ontario Average & Recorded Net Total Six-Month Supplies

2 REGULATION OF FLOWS & LEVELS

2.1 Application of Regulation Plan 1958-D

The Board assures that the provisions of the Commission's Orders of Approval relating to Lake Ontario-St. Lawrence River outflows and levels are met. Control of the outflows and levels of Lake Ontario follows a regulation plan that was designed to satisfy the criteria set out in the Commission's Orders and other requirements that were established to balance the benefits of regulation among various interests. The current plan of regulation, Regulation Plan 1958-D, was adopted by the Commission in 1963.

In 1961, the Commission authorized the Board to deviate from the outflows specified by the regulation plan in order to provide additional benefits to interests when this could be done without appreciable adverse effects on other interests. Today, the Board reviews conditions in the Great Lakes and Lake Ontario-St. Lawrence River basins at least monthly and establishes outflow strategies for the coming weeks that may or may not include deviations from Plan flows.

The outflow from Lake Ontario is computed weekly by following the procedure laid out in the Board's July 1963 Report to the Commission on Regulation Plan 1958-D. The computational procedure includes the following steps (the reader is referred to the Board's 1963 Report for additional details and considerations):

- Calculation of a provisional flow based on present conditions in the system (e.g., recent supplies and current/computed levels);
- Checking the provisional outflow against operational limits designed to protect interests; and,
- Setting a final 'Plan' outflow.

The Plan outflow is then reviewed by the Board's Regulation Representatives and Operations Advisory Group (OAG), and assessed against the Board's current outflow strategy and the current operational requirements of domestic water supply, navigation, power and other interests in the system. If all are in agreement, the Regulation Representatives, on behalf of the Board, recommend an outflow for the coming week to the Government representatives who direct the hydropower entities (who operate the structures that control the outflows) on the outflow. If not all OAG members and Regulation Representatives agree on the flow for the coming week, the Board of Control is called upon to decide.

To aid in decision making, the Board analyses the risk of exceeding the criteria of the Orders and other water level indicators developed by the Board through experience.

2.2 Board Regulation Strategies and Actions

In order to be responsive to changing conditions and the needs of interests, the Board schedules monthly teleconferences to review conditions in the Great Lakes-St. Lawrence River system and develop outflow strategies to respond to conditions and ensure that the Board is able to offer assistance to interests in times of critical need. The outflow strategies are designed to enhance the benefits provided by Regulation Plan 1958-D while not appreciably adversely impacting any interest. The strategy decisions made during the reporting period, and their rationales, are attached.

The Board's strategy during the reporting period was to balance and minimize the impacts of unusually low supplies and levels that occurred throughout the system during the period, while continuing to restore as much as possible of the 22.5 (8.9 in.) cm of water that had been removed from Lake Ontario during the previous fall and winter. In its spring 2007 progress report, the Board reported on a period of unusually high supplies of water to Lake Ontario lasting from September 2006 through January 2007 that, although not record supplies, prompted the Board to remove water from the Lake in order to ensure that the high supplies did not cause problems with high Lake levels in 2007. By December 2006, the Board's risk analyses were indicating a significant chance that the level of Lake Ontario would exceed the upper regulation limit (Criterion 'h') in the summer of 2007, so the Board decided to remove water from the Lake by flowing more than specified by the regulation plan. Over-discharges began in December and continued until mid March when the risk of high summer levels on the Lake had declined to an acceptable level. By that time, a total of 22.5 cm (8.9 in.) of water had been removed from the Lake.

Winter 2007 had been mild and there was very little snow left on the ground by March. The lack of spring runoff, combined with the Board's actions to remove water from the Lake, resulted in no rise in the Lake level in May and June, as would normally happen. In fact, the Lake level peaked on May 1 and dropped continuously thereafter. By mid April, the risk of flooding on the Lake was greatly reduced but, as a result of a change to dryer conditions, there was a growing risk that there would be low levels downstream later in the year. Therefore, in mid April, the Board began to restore the water that had been taken off the Lake over the winter. The initial objective of the strategy was to gradually restore all of the water by the fall as conditions in the system permitted. Later, it became apparent that persistent dry conditions and low downstream levels might make it impossible to restore all of the water by fall, and the objective became to restore as much water as possible. To implement the strategy, weekly outflows were as calculated with Plan 1958-D but using the "actual" Lake Ontario level rather than the "computed" level. This induced deviations from the Plan-prescribed flows that are based on the "computed" level. This strategy was followed throughout the remainder of the reporting period with minor exceptions as described below.

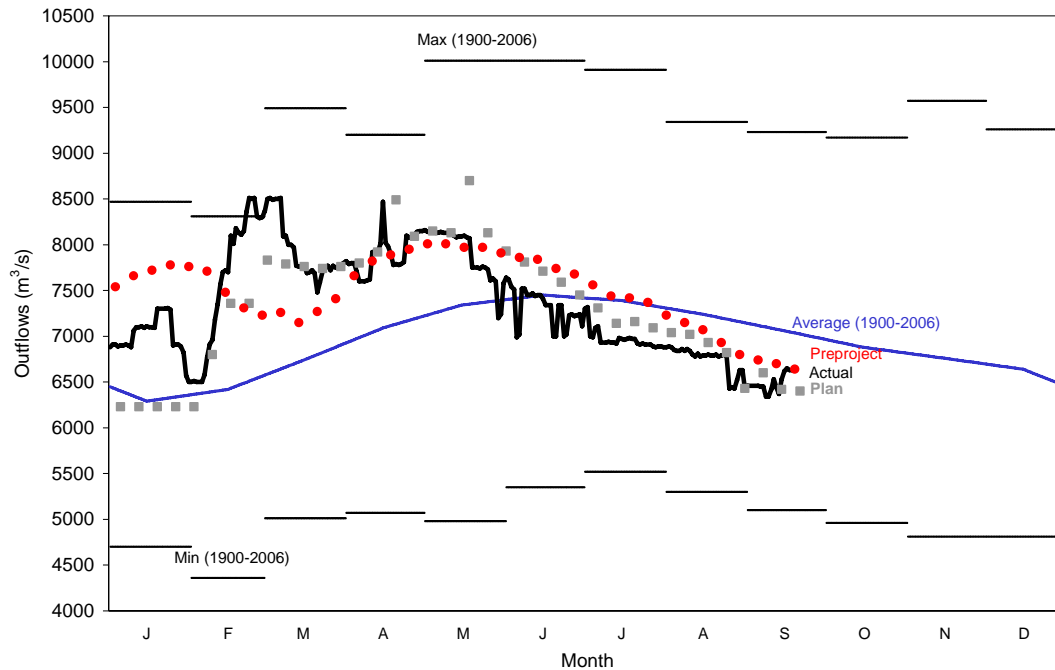
From August 18 through August 30, the Board augmented Lake Ontario outflows to help maintain the level on Lake St. Louis above the Seaway Low Alert level of 20.6 m (67.6 ft.). The Seaway imposed restrictions on vessel speed and meeting in the critical reach above Cote Ste Catherine lock. The OAG reviewed the situation on August 23. Ottawa River outflows were still abnormally low and relatively dry conditions persisted throughout the region with very little rainfall in the forecast. Seaway concerns about available depths in Lake St. Louis for ships from overseas drafting 26' 6" prompted the OAG to request a return to procedural Plan flow for the coming week in order to ensure that 20.6 m (67.6 ft.) would be maintained. The Seaway also issued a notice reducing the allowable draft in the Montreal-to-Lake Ontario Section to 26' 3" beginning September 1, given the actual and forecasted levels. That same day, the Canadian Coast Guard issued a caution to recipients of its weekly water level forecast for the St. Lawrence ship channel, warning about the reliability of the forecasts during the dry period. On August 23-24, the Board also reviewed the situation and decided to maintain its strategy of restoring water to the Lake as opportunities would permit. From August 28 through August 30, the outflow was 200 cms (7,053 cfs) above Plan flow. Until August 28, the outflows had been maintained below or equal to Plan flow.

By the end of the reporting period on September 12, 7.2 cm (2.8 in.) of the water remained off of the Lake relative to Plan 1958-D.

At its meeting on September 12, the Board decided to continue its strategy of restoring water to the Lake. One of the Board's goals remained to continue to restore as much of the water as possible by year end while minimizing and balancing the impacts of any outflow reductions on all stakeholders. The rationale for continuing the restoration was that the Lake level was well below average and declining, and, with supplies from the upper lakes and Lake Erie expected to remain below average for the coming months, there was a 13% chance of going below Criterion (j) by year's end. Low levels in the Seaway (Lake St. Louis) and Montreal Harbour were still a concern, and inflows from the Ottawa River were still below average, so restoration of water would only take place if and when it could be done without jeopardizing meeting the critical needs of these interests and other interests. In that regard, the Board also authorized outflow increases to assist interests with critical needs, including the end-of-season haul-out of recreational boats downstream. Under this strategy, with near normal supplies, the level on Lake Ontario by the end of October would be about 11 cm (4.3 in.) below the average and the end-of-December level would be about 12 cm (4.7 in.) below the average and 27 cm (10.6 in.) above the Criterion (j) level.

2.2.1 Deviations from Regulation Plan1958-D

During the reporting period, the Board deviated from Plan flow for a total of 3,227 hours, which was approximately 81 percent of the time (Table 4). About 86 percent of the deviations were to restore the water to Lake Ontario that had been removed during the previous winter and spring. The remaining deviations were short-term events to assist various interests with critical needs, as shown in the table. Not shown in the table are occasions in August, when the Board exercised its discretionary authority to return to Plan flow from its restoration-level outflows, to assist downstream shipping. The net result of all of the deviations during the reporting period was to reduce the amount of water taken off of Lake Ontario from 22.5 cm (8.9 in.) on March 29 to 7.2 cm (2.8 in.) on September 12. The effect of the deviations on lake levels is shown in Figure 12a and the effectiveness of the deviations in meeting the Board's objectives is reviewed in Section 2.3.

Figure 10. Lake Ontario Daily Outflows for 2007**Table 4. Summary of Outflow Deviations from Regulation Plan 1958-D Outflow**

Date 2007	Deviation	Deviation (cms-weeks)	Accumulated Deviation rounded (cms-weeks)	Cumulative Effect on Lake Ontario Rounded (cm)	Reason for Deviation
Mar 29			7260	-22.5	Total accumulated outflow deviations at start of reporting period
Apr 5-6	-200 cms for 96 hrs	-39	7220	-22.4	Hydropower Request - HQ
Apr 7-10	-320 cms for 96 hrs	-183	7040	-21.8	Hydropower Request - HQ
Apr 14 ¹	-500 cms for 24 hrs	-71			Hydropower Request - HQ
Apr 16-18	-500 cms for 63 hrs	-188			Hydropower Request - HQ
Apr 18-20	-700 cms for 57 hrs	-238	6540	-20.2	Pt. Claire approaching Flood Stage
Apr 21-23	-300 cms for 72 hrs	-129	6410	-19.8	To restore water
May 12-18	-610 cms for 168 hrs	-610	5800	-18.0	To restore water
May 19-25	-380 cms for 168 hrs	-380	5420	-16.8	To restore water
May 26-28	-310 cms for 72 hrs	-133			To restore water
May 29-30	-730 cms for 48 hrs	-209			Hydropower - OPG bank outage & to restore water
May 31-Jun1	-310 cms for 48 hrs	-89	4990	-15.4	To restore water
Jun 2	-190 cms for 24 hrs	-27			To restore water
Jun 3-4	-280 cms for 48 hrs	-80			To restore water
Jun 5-6	-810 cms for 48 hrs	-231			Hydropower - OPG bank outage; To restore water
Jun 7-8	-280 cms for 48 hrs	-80	4570	-14.2	To restore water
Jun 9-15	-260 cms for 168 hrs	-260	4310	-13.3	To restore water
Jun 16-18	-250 cms for 72 hrs	-107			To restore water
Jun 19-20	-590 cms for 48 hrs	-169			Hydropower - OPG bank outage; To restore water
Jun 21-22	-250 cms for 48 hrs	-71	3960	-12.3	To restore water
Jun 23-24	-440 cms for 48 hrs	-126			To restore water
Jun 25-29	-220 cms for 120 hrs	-157	3680	-11.4	To restore water
Jun 30	-210 cms for 24 hrs	-30			To restore water
Jul 3-4	-310 cms for 48 hrs	-89			Hydropower - OPG bank outage 7 to restore water

Jul 5-6	-210 cms for 48 hrs	-60	3500	-10.8	To restore water
Jul 7-13	-210 cms for 168 hrs	-210	3290	-10.2	To restore water
Jul 14-20	-190 cms for 168 hrs	-190	3100	-9.6	To restore water
Jul 21-27	-180 cms for 168 hrs	-180	2920	-9.0	To restore water
Jul 28-Aug 3	-160 cms for 168 hrs	-160	2760	-8.5	To restore water
Aug 4-10	-170 cms for 168 hrs	-170	2590	-8.0	To restore water
Aug 11-17	-140 cms for 168 hrs	-140	2450	-7.6	To restore water
Aug 18-24	-30 cms for 168 hrs	-30	2420	-7.5	To restore water
Aug 28-30	200 cms for 59 hrs	70	2490	-7.7	To maintain Lake St. Louis levels above 20.6 m
Sep 1-7	-140 cms for 168 hrs	-140	2350	-7.3	To restore water
Sep 8-10 Sept 10-12	-90 cms for 62 hrs 110 cms for 48 hrs	-33 31			To restore water To maintain Lake St. Louis levels above 20.6 m
Sept 12	-90 cms for 10 hrs	-5	2340	-7.2	To restore water

Notes: 1. Outflow returned to Plan flow on April 15 to assist in freeing a grounded ship in Montreal Harbour

2.2.2 Ice Management

The hydropower entities install a series of ice booms each winter in the international section of the River to aid in the formation and stabilization of the ice cover. The booms are normally removed as the ice deteriorates locally. This year, all booms were removed by March 28, without incident or problem.

2.2.3 Iroquois Dam Operations

Under the conditions of paragraph (j) of the Commission's Order of Approval dated 29 October 1952, the power entities are permitted to operate Iroquois Dam with Board approval. The gates of the dam can be lowered into the water to assist in ice formation and to reduce the level of Lake St. Lawrence when there are low outflows. Boaters must use the Iroquois lock to bypass the dam when the dam gates are in use.

The gates were not operated during the reporting period.

2.3 Results of Regulation

2.3.1 Upstream

Lake Ontario

The daily water levels on Lake Ontario for 2005, 2006 and 2007 to date are shown in Figure 11.

At the beginning of the reporting period on March 29, the level of Lake Ontario was 15 cm (5.9 in.) above the long-term average. The level peaked on May 1, about six weeks earlier than normally, at 12 cm (4.7 in.) above average. It then gradually declined to average on May 28 and below-average values thereafter for the remainder of the reporting period. By the end of the reporting period on September 12, the Lake level was 18 cm (7.1 in.) below average.

As a means of informing the Commission on the impacts of regulation activities on levels and outflows, the Board provides the Commission with a comparison of Lake Ontario's actual monthly levels and outflows to those that would have been obtained under pre-project conditions (that is, the levels and outflows that would have occurred had regulation not been undertaken). A summary of this comparison for the reporting period is provided in Table 5. Figure 12a provides a comparison of the daily levels with the long-term average, weekly computed Plan 1958-D and pre-project levels.

Figure 11. Water Level on Lake Ontario

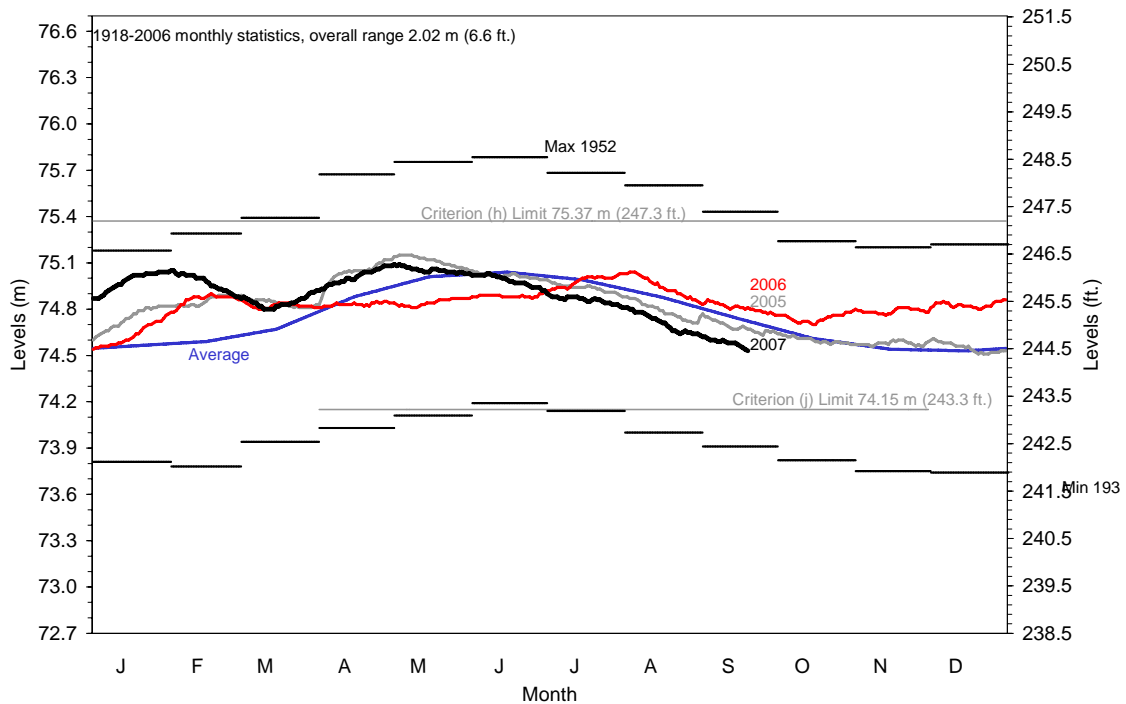


Table 5. Lake Ontario Recorded and Pre-Project Levels and Outflows

2007	Monthly Mean Lake Ontario Water Levels (IGLD 1985)			Monthly Mean Lake Ontario Outflow		
	Recorded (metres (feet))	Pre-project (metres (feet))	Diff. (cm (inches))	Recorded (m ³ /s (t cfs))	Pre-project (m ³ /s (t cfs))	Diff. (m ³ /s (t cfs))
Mar	74.85 (245.57)	75.18 (246.65)	-0.33 (-1.08)	7940 (280)	7310 (258)	630 (22)
Apr	75.01 (246.09)	75.38 (247.31)	-0.37 (-1.22)	7890 (279)	7880 (278)	10 (0)
May	75.05 (246.22)	75.42 (247.44)	-0.37 (-1.22)	7910 (279)	7960 (281)	-50 (-2)
Jun	74.98 (245.99)	75.32 (247.11)	-0.34 (-1.12)	7320 (259)	7760 (274)	-440 (-16)
Jul	74.86 (245.60)	75.14 (246.52)	-0.28 (-0.92)	6970 (246)	7390 (261)	-420 (-15)
Aug ⁽¹⁾	74.71 (245.11)	74.93 (245.83)	-0.22 (-0.72)	6750 (238)	6980 (246)	-230 (-8)

⁽¹⁾ Provisional

During the reporting period, Lake Ontario levels were about 22-37 cm (0.7 -1.2 ft) lower than they would have been without regulation (i.e., the pre-project level). On March 29, the level was about 22.5 cm (8.9 in.) lower than it would have been if the Board had not deviated from Plan during the winter. The level remained some 20 cm (9 in.) lower than Plan level during April and May. The level was about 7.2 cm (2.8 in) below Plan level on September 12.

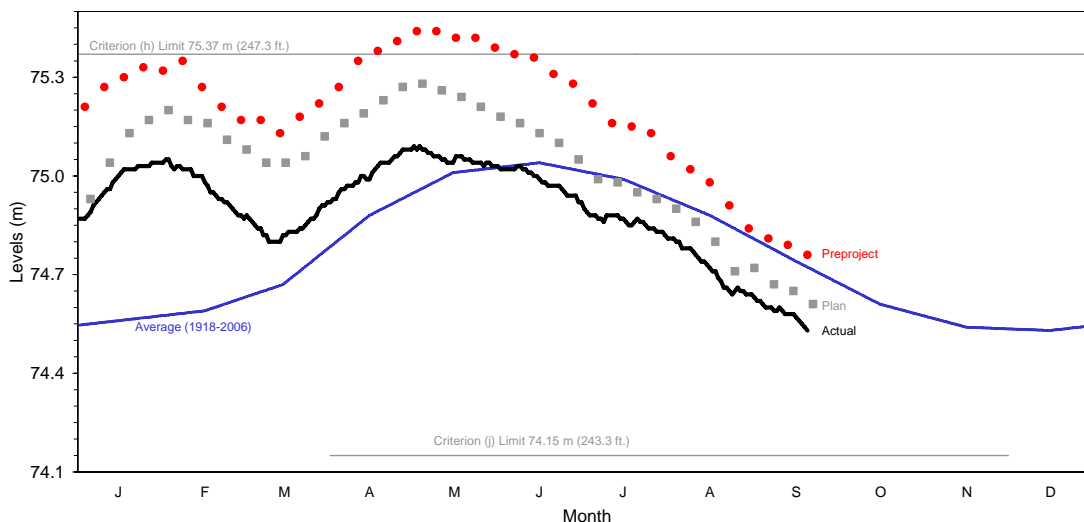
Figure 12a. Lake Ontario Actual, Pre-Project and Plan Levels

Figure 12b which covers the June 2006 to June 2007 period shows more clearly the effect on Lake Ontario levels of the Board's strategy to remove water from the Lake last winter and then restore the water beginning in April. The chart shows that the pre-project level would have exceeded the upper regulation limit from mid April until early June.

Lake St. Lawrence

The daily levels on Lake St. Lawrence at Long Sault Dam for 2005, 2006 and 2007 to date are shown in Figure 13. The levels were near the average for most of the reporting period, being generally below average from April to mid May and generally above average for the rest of the period.

2.3.2 Downstream

Lake St. Francis

The regulation of Lake Ontario outflows has a limited effect on the levels of Lake St. Francis, as the lake level is regulated by hydropower plant operations at Beauharnois and Les Cedres, Quebec. The historic range of monthly mean levels on Lake St. Francis since completion of the Saunders-Moses project is about one-fifth that of Lake St. Lawrence.

The daily levels on Lake St. Francis at Summerstown for 2005, 2006 and 2007 to date are shown in Figure 14. The levels on Lake St. Francis fluctuated around the average in March, were above average in April and early May, and below average for most of the time from June to the end of the reporting period. Daily fluctuations in the level caused by shifting winds and operations were within the normal ranges. The daily mean levels remained well above the Seaway Low Alert throughout the reporting period.

Figure 12b. Lake Ontario Actual, Pre-Project and Plan Levels for June 2006 thru June 2007

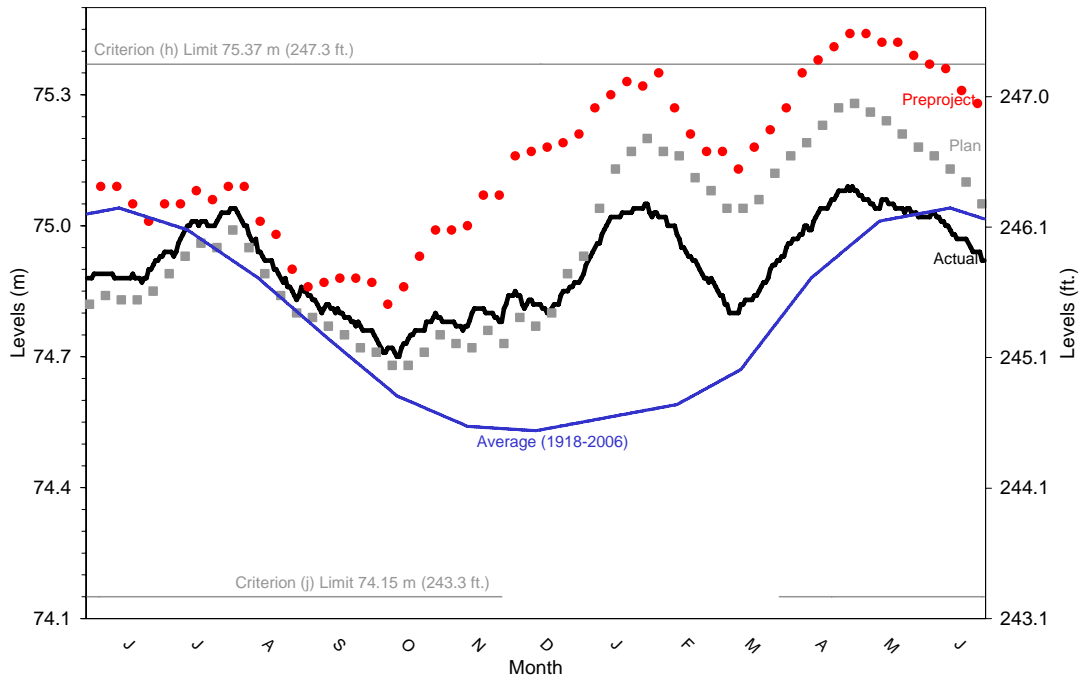
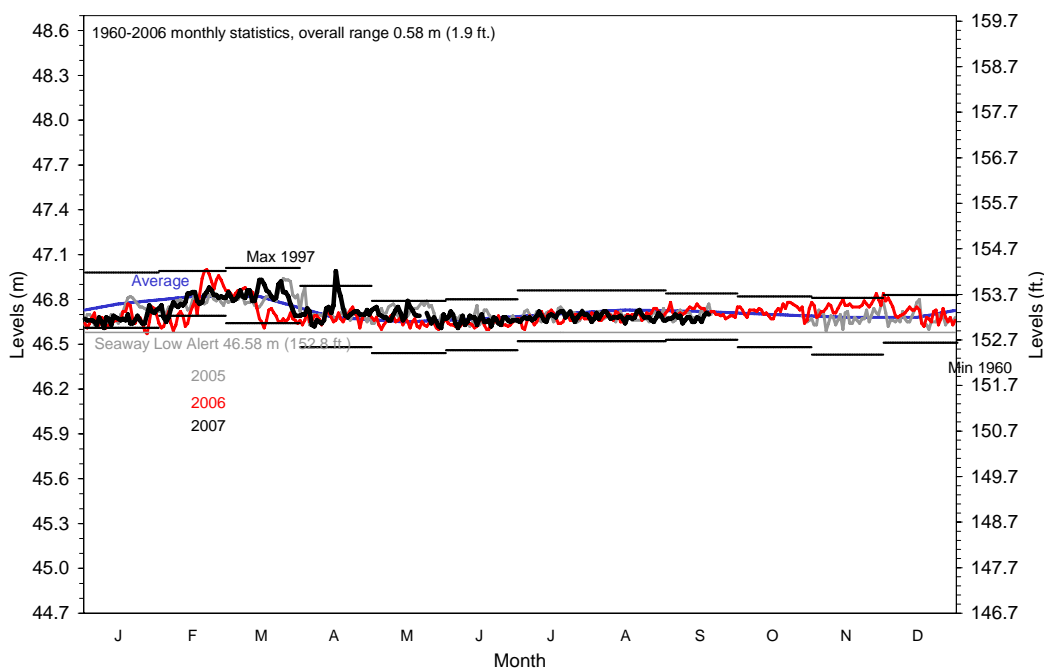


Figure 13. Water Level on Lake St. Lawrence (at Long Sault Dam)



Figure 14. Water Level on Lake St. Francis (at Summerstown)

Lake St. Louis

Lake St. Louis water levels are influenced by the discharges from both the St. Lawrence and Ottawa Rivers.

The daily water levels on Lake St. Louis at Pointe-Claire for 2005, 2006 and 2007 to date are shown in Figure 15. Daily levels on Lake St. Louis fluctuated around the average in early April and peaked just below the flood alert level on April 18. The levels fell below average on May 7 where they remained for most of the remainder of the reporting period. Daily fluctuations in the level caused by shifting winds and operations were within the normal ranges. Beginning on August 18, the Board augmented outflows from Lake Ontario in order to maintain Lake St. Louis levels at or above the Seaway Low Alert. Due to low levels, the Seaway imposed various traffic restrictions from August 13 through the remainder of the reporting period (see Section 6). The lowest level during the period was on September 10 at 5 cm (2 in.) below the Alert.

Port of Montreal

Water levels in Montreal Harbour are influenced by the discharges from the St. Lawrence and Ottawa Rivers, winds and, to a small extent, the tide. The daily water levels in Montreal Harbour for 2005, 2006 and 2007 to date are shown in Figure 16. The spring levels in Montreal Harbour followed a similar pattern to those on Lake St. Louis and after the April runoff period the levels remained below average. The daily levels were above chart datum until August 11 when they fell below datum and remained there for the rest of the reporting period. Between August 27 and 29, and September 3 and 12, the daily levels were below the previous monthly minimums. The Canadian Coast Guard's water level forecast service continued to assist incoming vessels determine appropriate arrival drafts but, due to the sudden unexpected low levels beginning in August, one vessel was required to lighten to gain permission to enter the River.

Figure 15. Water Level on Lake St. Louis (at Pointe-Claire)

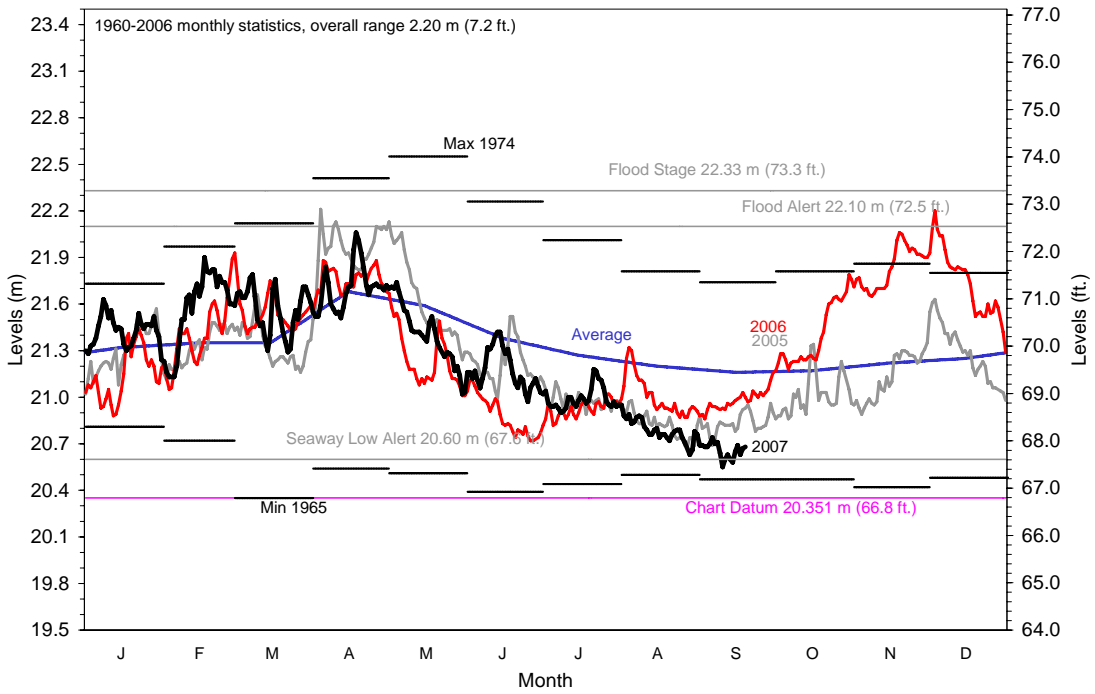
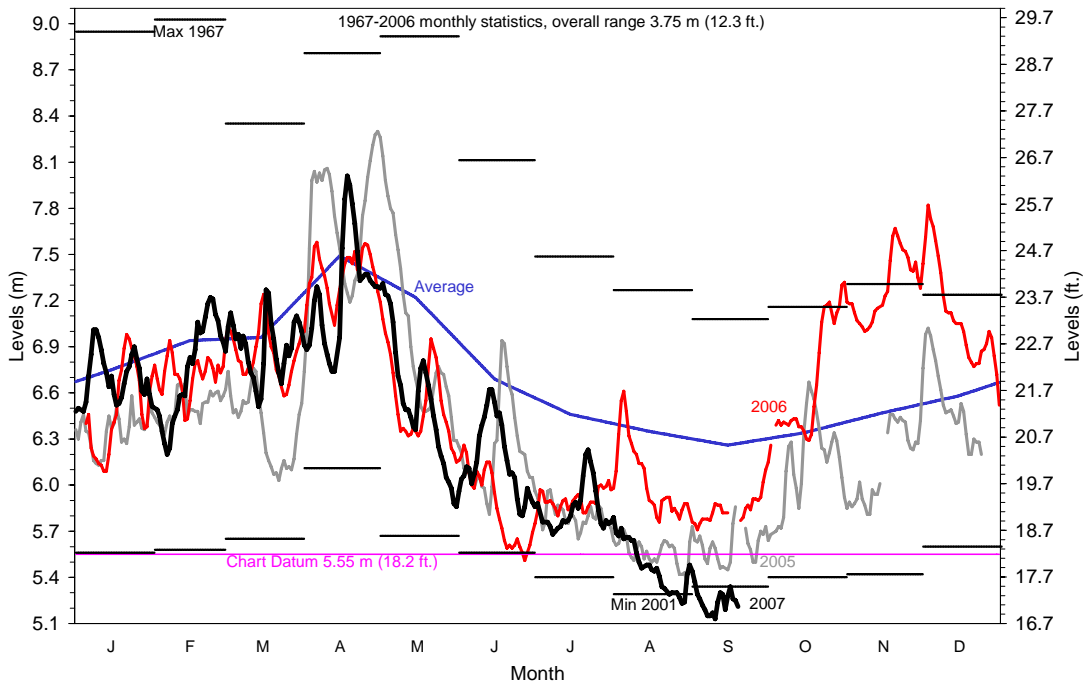


Figure 16. Water Level in the Port of Montreal (at Jetty #1)



3 BOARD ACTIVITIES

3.1 Board Meetings & Conference Calls

The Board continued to oversee the operations of the hydropower project in the international reach of the St. Lawrence River. The Board, primarily through the offices of the Regulation Representatives, monitored conditions throughout the Lake Ontario-St. Lawrence River and Ottawa River systems. The Regulation Representatives provided the Board with weekly regulation data, monthly reviews of the hydrological conditions, monthly risk analyses using water level outlooks, and advised the Board on regulation strategy options and their potential impacts on water levels and interests throughout the system. The Board's Operations Advisory Group (OAG) held weekly teleconferences to apprise the Regulation Representatives of operational requirements and constraints. The Committee on River Gauging continued to monitor the Power Entities' program for operation and maintenance of the gauging system required for Board operations, and report annually.

The Board continued to assess conditions in the basin and adjust its regulation strategy monthly through meetings, conference calls, telephone and e-mail. The Board met three times face-to-face, on April 17 in Washington, DC, on June 20 in Brockville, Ontario and on September 12 in Niagara Falls, Ontario. The Board met twice by teleconference, on May 9 and August 8. In July, the regulation strategy decision was confirmed by e-mail and telephone. Board member attendance at the meetings and conference calls is provided in Table 6.

The Board continued to provide the IJC with information and advice related to the Lake Ontario-St. Lawrence River Study on request. In that regard, on September 12, the Board received a briefing from the IJC on the Commission's decision process regarding a possible new Order of Approval and regulation plan for the Lake Ontario-St. Lawrence River system.

Table 6. Attendance at Meetings and Teleconferences

Board Member	Country	April 17 Meeting*	May 9 T. Conf.	June 20 Meeting	Aug. 8 T. Conf.	Sept. 12 Meeting*
Mr. J. Bernier	U.S.	x		x	x	x
BG B. A. Berwick ¹	U.S.	x				x
Mr. A. Carpentier ³	Can.	x	x	x	x	x
COL J. D. Drolet	U.S.			x	x	x
Dr. T. Hullar	U.S.	x	x	x		
Mr. J. Lorquet ²	Can.	x	x			
Mr. R. P. Metcalfe	Can.	x	x	x	x	x
Dr. F. Sciremammano, Jr.	U.S.	x		x		x
Mr. P. Yeomans	Can.	x	x	x	x	x

Notes: 1. U. S. Co-Chair
 2. Canadian Co-Chair
 3. Acting Canadian Co-Chair beginning in June 2007

* Locations of Meetings: April 17, 2007 – Washington, DC
 June 20, 2007 – Brockville, Ontario
 September 12, 2007 – Niagara Falls, Ontario

3.2 Meetings with the Public and Input from the Public

The Board's annual face-to-face meeting with the public takes place on the third Tuesday of June. Teleconferences with the public take place on the third Tuesdays of September and March. On-site meetings associated with the teleconferences take place in Montreal and Rochester in March and Cornwall and Oswego in September.

The Board held its 2007 meeting with the public on June 19, in Brockville, Ontario. About 15 public attended the meeting as well as two IJC Commissioners who also participated in the meeting. Input from the public was positive and supportive of the Board's strategies, and no complaints or concerns were expressed. The Board addressed several questions from the public.

Beginning in mid August, the Board responded to several complaints from upstream and downstream boating communities and the Port of Montreal regarding low water levels. There was also some public criticism that the Board had not restored the water to the Lake more quickly earlier in the year.

During the reporting period, the Communications Committee, individual Board Members and the Secretaries were actively engaged in outreach, information exchange and liaison with stakeholders throughout the Lake Ontario-St. Lawrence River system. Board members and staff responded to a number of inquiries and requests for interviews from the media and general public concerning water level conditions and the Board's strategies.

4. COMMUNICATIONS COMMITTEE REPORT

The Board's experience and the work under the IJC's Lake Ontario St. Lawrence River Study both demonstrate that communications have become ever more important to the Board and Commission. Therefore, effective communications remains a key focus of the Board. Overall, over the past year or so the Board has updated, modernized and intensified its communications with the public, to good effect. The Board's core activities—Multi-City Teleconferences, Annual Meeting with the Public, news releases and communiqués—continue, but they are steadily being upgraded by more user-friendly and professionally-based communications work and a number of innovations have been introduced to date.

During the reporting period the Board continued to work with the International Joint Commission through the Communications Committee to identify further opportunities to improve communications with the public and implement them where available resources allowed². Current and proposed products and communications improvements that have been identified require a dedicated effort if future communications are to be sufficient. The Communications Committee met a number of times face-to-face and by teleconference to continue to develop and implement short-term and long-term work plans.

² Initiatives include: establishing and maintaining a comprehensive database on stakeholders; setting standard times for meetings and teleconferences with the public and fixed locations for the on-site meetings associated with the teleconferences; implementing a comprehensive mailing list developed by the LOSL Study Board, of approximately 1700 names, to improve Board communication with stakeholders and attendance at Board public events; preparing for updating the brochure describing the story of the regulation of Lake Ontario outflows, how it works and the Board's role (the new brochure would be proposed for release sometime early in the transition period following the IJC's announcement regarding the future regulation of Lake Ontario); analysing the Board's current and anticipated communication needs and the related need for the continued support of a communication specialist; developing water level and other hydrologic charts to be published weekly and monthly on the Board's website to respond to requests by the public and consider accompanying the charts with pre-recorded written or oral briefings; and updating the Board's Communication Strategy document.

The Communication Committee continued to provide advice and assistance to the Board in planning and carrying out its communication activities. In August, the Board accepted a Communications Committee proposal to suspend work on several ongoing initiatives related to improving Board communications with the public, and begin no new initiatives, until the communication needs related to the new Order and Regulation Plan have been identified. The Committee will continue to plan and carry on with the Board's core communication functions, including efforts to understand and respond to the issues and concerns of stakeholders in ways that are consistently understandable, positive and helpful.

Routine communication activities carried out during the reporting period included:

- Preparation of news releases: The Board issued news releases after each regulation decision, to provide the public with recent information on water level conditions and regulation strategies; the releases were sent to fax and mailing lists as well as posted on the Board's website and ListServe;
- Operation of the Board's 1-800 numbers: The Board continued to post weekly updates of levels and flows. In the U.S., the number is 1-800-883-6390, and in Canada the numbers are 1-800-215-8794 (English) and 1-800-215-9173 (French);
- Operation of the Board's Web Page on the Internet (<http://www.islrbco.org>) (the average monthly number of visitors during the reporting period was approximately 2000). The Page includes:
 - Weekly updates on water levels and outflows;
 - General information about the Board, its activities and structure;
 - Announcements about Board-related public meetings and events;
 - Announcements about the Board's outflow strategies and related news releases;
 - Posting of the Board's meeting minutes and teleconference summaries;
 - Information about the Board's next annual meeting and teleconferences with the public.
- The Board's annual meeting and fall teleconference with the public (Section 3.2);
- The Board's Regulation Representatives send out weekly updates on Lake Ontario regulation and water level and outflow conditions, as well as the Board's news releases and public meeting notices, to a list of approximately 136 e-mail subscribers.

5 RIVER GAUGING COMMITTEE REPORT

The Board's St. Lawrence Committee on River Gauging monitors the Power Entities' program of operating and maintaining 15 water level gauges required for the Board's monitoring of water levels and flows related to the operation of structures and forebay elevations. This includes annual inspections of the water level gauging network. The Committee also ensures the accuracy of flow and water level measurements. This includes annual inspections of the computational methods used at each of the eight outflow structures as well as auditing the Power Entities' data processing. The Committee is charged with providing the Board with an annual report on the inspection results and computed outflows.

The Committee continued to monitor, facilitate and report on progress made by the responsible agencies in follow up to recommendations appearing in Committee's reports that were adopted by the Board. The Board also concluded that the Power Entities are responsible for providing

Iroquois Dam tail water data to the Regulation Representatives but may do so through another agency by agreement with that agency.

The Board received the Committee's 67th and 68th reports for the years 2003 and 2004, respectively, on March 29, 2007 and informed the Committee of its approval and acceptance of the reports by letter dated July 11, 2007. The 69th report (for 2005) was in the signature stage and expected to be submitted to the Board shortly and the 70th report was drafted and in the audit stage. The Committee committed to ensuring that future annual reports are submitted in a more timely manner.

5.1 Water Level Gauges

Gauge monitoring activities proceeded routinely during the reporting period.

5.2 Raisin River

The Raisin River Diversion was opened on June 27 and was still in operation on September 12. The diverted outflow was typically about 0.04-0.06 m³/s.

5.3 Turbine Upgrades

Moses Unit 27, which was removed from service for upgrade on February 1, 2007, is expected to be back in operation by October 31, 2007. Unit 27 is the first of the eight Allis Chalmers turbines to be upgraded and an interim rating table has been developed to be put in place when the Unit returns to service.

NYPA contracted to have the second field testing of its upgraded Baldwin Unit conducted this September and October. This will be the second field test for upgraded BLH units. Following the test, the rating tables will be issued as final rather than the current designation of interim.

6 ST. LAWRENCE SEAWAY REPORT

In 2006, the Board decided that the Seaway Entities were no longer required submit formal written reports to the Board on the opening and closing of the Seaway so long as the information is conveyed to the Board in other formats.

On August 13, the Seaway issued vessel speed and meet restrictions for a section above Cote Ste Catherine Lock due to water levels below local alert level. From August 18 until August 30, the Lake Ontario outflow was augmented to maintain levels on Lake St. Louis above the Seaway Low Alert of 20.6 m (67.6 ft.) at Pointe-Claire. The St. Lawrence Seaway Management Corporation carefully monitored water levels in the South Shore Canal, which remained near the Low Alert during this period. The Seaway advised vessels to proceed at the slowest safe speed and imposed a 'no-meet' restriction in the area above Cote Ste Catherine lock. Beginning on September 1, the Seaway restricted the draft in the Montreal-to-Lake Ontario Section to 26' 3" (from 26' 6"). The Seaway advised that dredging would be performed to reduce the incidence of high spots in the South Shore Canal.

7 HYDROPOWER PEAKING AND PONDING

By letter dated 13 October 1983, the Commission authorized Ontario Power Generation and the New York Power Authority to continue to carry out peaking and ponding operations at the St. Lawrence Project. Conditions governing peaking and ponding operations are specified in

Addendum No. 3 to the Operational Guides for Regulation Plan 1958-D. The authority to peak and pond is subject to Commission review and approval every five years. However, following the latest review, the Commission, on October 28, 2005, approved peaking and ponding operations until the adoption of any revised Orders for the regulation of the St. Lawrence River or for a two-year period, whichever came first.

Peaking operations were conducted during the reporting period, but no ponding operations were conducted.

The power entities wrote to the IJC on July 26, 2007, to request the IJC's approval to continue Peaking and Ponding operations in accordance with Addendum 3 to the Operational Guides for a five-year period beginning upon the expiration of the current approval on October 28. The IJC replied on September 12, approving peaking and ponding operations for a further one-year or until a new approval is issued, whichever comes first.

8 BOARD AND COMMITTEE MEMBERSHIP CHANGES

There were no changes to the membership of the Board or its Committees. There remains one vacancy on each of the Canadian and U.S. Sections of the Board.

Respectfully submitted,

Members for Canada

Members for the United States

J. Lorquet, Chair

BG Bruce A. Berwick, Chair

A. Carpentier

J. Bernier

R. P Metcalfe

T. Hullar



P. Yeomans

F. Sciremammano, Jr.

Vacant

Vacant

Lake Ontario Outflow Strategies

Released April 4, 2007 - Control Board maintains strategy

The International St. Lawrence River Board of Control (Board), after a review of conditions in the Lake Ontario-St. Lawrence system, announced today its intent to continue to follow the outflows called for by Plan 1958-D. The Board has been following Plan 1958-D outflows since March of this year, following a concerted effort to reduce the risk of Lake Ontario exceeding the Criterion (h) level later this year.

The total supply of water to the Lake Ontario basin in February was well below average, while preliminary figures indicate that the water supplies in March were slightly above average as the snow-pack melted late in the month. The lake rose about 5 cm (2 in.) in March, as compared to an average rise of about 15 cm (6 in.). Currently the levels are about 13 cm (5 in.) above average. The current levels are well within the mandated range specified in the criteria for the regulation of Lake Ontario levels.

The levels of Lake St. Lawrence, Lake St. Louis, and Montreal Harbour remain near average. The level at Pointe Claire on Lake St. Louis is not expected to fall to the Seaway 'alert level' (the level at which commercial ships begin to be impacted by low levels) during the next couple of months. The water level in Montreal Harbour is currently around 1.3 m (4.3 ft.) or more above chart datum and is not expected to drop to chart datum in the near future. However, there is a good chance that it will reach datum, at least briefly, before the end of the year.

The forecast for Lake Ontario levels indicates that levels will drop to below average by late spring. Due to reduced water supplies and the Board's actions the past several months, there is very little chance this year that Lake Ontario levels will exceed the upper limit prescribed in the Orders of Approval for the operation of the system.

Currently, there are 22.4 cm (8.8 in.) of water released from Lake Ontario beyond what the regulation plan calls for. That is, the actual level is about 22.4 cm (8.8 in.) lower than it would have been had the Board strictly followed the regulation plan. The level is also about 30 cm (one foot) lower than it would have been under pre-project conditions, i.e., the "state of nature" conditions prior to the navigation and power project being constructed.

The Board, in conjunction with its staff, is monitoring the situation carefully and is prepared to take quick action if required. The Board will meet later this month to assess the situation, or earlier if there is a significant change in conditions.

Released April 24, 2007 - Control Board modifies strategy

The International St. Lawrence River Board of Control (Board), after a review of conditions in the Lake Ontario-St. Lawrence system, announced today its intent to begin to gradually restore water to Lake Ontario, as conditions allow. The Board had released nearly 23 cm more water from Lake Ontario than specified by the regulation plan in order to reduce the risk of Lake Ontario exceeding 75.37 m (247.3 ft), its upper limit, this year. Restoration of the water occurs as the Board releases less water than specified by the regulation plan. The recent heavy rains have caused levels in the Montreal area to approach flood levels, which limits Lake Ontario outflows, and results in the restoration of some water to the Lake.

The total supply of water to the Lake Ontario basin in March was somewhat above average. The lake rose 4 cm (1 ½ in.) in March, as compared to an average rise of about 14 cm (5 ½ in.). Currently the levels are about 13 cm (5 in.) above average. The current levels are well within the mandated range specified in the criteria for the regulation of Lake Ontario levels.

The river levels downstream of the Moses-Saunders hydropower facility are above average from the recent rains. The level at Pointe Claire on Lake St. Louis is not expected to fall to the Seaway 'alert level' (the level at which commercial ships begin to be impacted by low levels) during the next couple of months. The water level in Montreal Harbour is currently around 2 m (6.5ft.) or more above chart datum and is not expected to drop to chart datum in the near future. How-ever, there is a good chance that it will reach datum, at least briefly, before the end of the year.

The forecast for Lake Ontario levels indicates that levels will drop to below average by summer. There is very little (about a 2%) chance this year that Lake Ontario levels will exceed the upper limit prescribed in the Orders of Approval for the operation of the system.

Currently, there are about 20 cm (8 in.) of water released from Lake Ontario beyond what the regulation plan calls for. That is, the actual level is about 20 cm (8 in.) lower than it would have been had the Board strictly followed the regulation plan. The level is also about 38 cm (15 in.) lower than it would have been under pre-project conditions, i.e., the level the lake would now be if the outflows were not regulated and the navigation and power project not been constructed. The Board intends to restore most of the water by the end of the year.

The Board, in conjunction with its staff, is monitoring the situation carefully and is prepared to take quick action if required. Restoration of the water will be discontinued should the lake approach its upper limit, or if required to meet critical needs. The Board will meet next month to assess the situation, or earlier if there is a significant change in conditions.

Released May 11, 2007 - Control Board maintains strategy

The International St. Lawrence River Board of Control (Board), after a review of conditions in the Lake Ontario-St. Lawrence system, announced today its intent to continue to gradually restore water to Lake Ontario, as conditions allow. The Board had released nearly 23 cm more water from Lake Ontario than specified by the regulation plan in order to reduce the risk of Lake Ontario exceeding 75.37 m (247.3 ft), its upper limit, this year. Restoration of the water occurs as the Board releases less water than specified by the regulation plan. The Board's goal is to restore all or most of the water by year end if average amounts of precipitation are received.

The total supply of water to the Lake Ontario basin in April was above the average. However, due to above-average outflows, the lake rose by only 16 cm (6.3 in.) in April, as compared to an average rise of about 21 cm (8.3 in.). Currently the levels are about 7 cm (2.8 in.) above average. The current levels are well within the mandated range specified in the criteria for the regulation of Lake Ontario levels.

The level at Pointe Claire on Lake St. Louis is near average and is not expected to fall to the Seaway 'alert level' (the level at which commercial ships begin to be impacted by low levels) during the next couple of months. The water level in Montreal Harbour is currently around 1.0 m (3.3 ft.) above chart datum and is not expected to drop to chart datum in the near future. However, there is a good chance that it will reach datum, at least briefly, before the end of the year.

The forecast for Lake Ontario levels indicates that levels will drop to below average by July, or earlier if conditions are dry. There is very little chance (less than 2%) this year that Lake Ontario levels will exceed the upper limit prescribed in the Orders of Approval for the operation of the system.

As a result of higher releases of water from Lake Ontario during the winter than the regulation plan called for, the actual level of the lake is about 20 cm (8 in.) lower than it would have been had the Board strictly followed the regulation plan. The level is also about 38cm (15 in.) lower than it would have been under pre-project conditions, i.e., the level the lake would now be if the outflows were not regulated and the navigation and power project not been constructed.

The Board, in conjunction with its staff, is monitoring the situation carefully and is prepared to take quick action if required. Restoration of the water will be discontinued should the lake approach its upper limit, or if required to meet critical needs. The Board will meet next month to assess the situation, or earlier if there is a significant change in conditions.

Released June 25, 2007

The International St. Lawrence River Board of Control (Board,) after reviewing conditions in the Lake Ontario-St. Lawrence system, announced today its intent to continue to gradually restore water to Lake Ontario, as conditions allow. Last winter, the Board released almost 23 cm more water from Lake Ontario than specified by the regulation plan in order to reduce the risk of Lake Ontario exceeding its upper limit of 75.37 m (247.3 ft) this year. By mid June, approximately half of the water had been restored. Restoration of the water occurs as the Board releases less water than specified by the regulation plan. The Board's goal is to restore most of the water by year end if average amounts of precipitation are received. Restoration of the water will be discontinued or other short term deviations made if required to meet critical needs.

The total supply of water to the Lake Ontario basin in May was below the average and the lake level fell by 5 cm (2.0 in.) during the month, as compared to an average rise of about 8 cm (3.1 in.). Currently the levels are about 5 cm (2.0 in.) below average, which are well within the mandated range specified in the criteria for the regulation of Lake Ontario levels.

Water levels on the upper Great Lakes (Lakes Superior and Michigan-Huron) are well below the average, which is expected to contribute to the level on Lake Erie falling below average in the near future. Therefore, with lower supplies expected from Lake Erie, the forecast for Lake Ontario levels indicates that levels will remain below average for the next several months if average amounts of precipitation are received. If conditions are dry, there is a significant chance (about 14%) that Lake Ontario levels will fall below the lower limit prescribed in the Orders of Approval this year.

The level at Pointe Claire on Lake St. Louis is below average and there is a significant chance (about 36%) that the level will decline to the Seaway 'alert level' (the level at which commercial ships begin to be impacted by low levels) by fall. The water level in Montreal Harbour is also below the average and expected to remain below average for the next several months if normal amounts of precipitation are received. There is a good chance that it will reach datum, at least briefly, before the end of the year.

The Board, in conjunction with its staff, is monitoring the situation carefully and is prepared to take quick action if required. The Board will meet next month to assess the situation, or earlier if there is a significant change in conditions.

Released August 14, 2007

The International St. Lawrence River Board of Control (Board), after a review of conditions in the Lake Ontario-St. Lawrence system, announced today its intent to maintain the same strategy as the last few months (see June and July Releases).

The Board, in conjunction with its staff, is monitoring the situation carefully and is prepared to take quick action if required. Restoration of the water will be discontinued should the lake approach its upper limit, or if required to meet critical needs. The Board will meet next month to assess the situation, or earlier if there is a significant change in conditions.

Released September 17, 2007

The International St. Lawrence River Board of Control (Board,) after reviewing conditions in the Lake Ontario-St. Lawrence system and noting particularly the ongoing period of unusually low supplies and low levels throughout the Lake Ontario-St. Lawrence River system as well as the abnormally low levels in the upper Great Lakes, announced today its intent to continue to gradually restore water to Lake Ontario, if conditions will allow. By September 12, approximately 16 cm (6.3 in.) of the 23 cm (9 in.) of water that had been removed from the Lake last winter had been restored. In making any further restoration of water to the Lake, the Board will continue to ensure that regulation activities remain balanced in the best interests of all stakeholders. In that regard, the Board also authorized short-term deviations in the outflow to meet the critical needs of interests, including over-discharges to meet critical hydropower needs, maintain levels at Pointe-Claire at 20.6 m (67.6 feet) or allow certain incoming vessels to reach the Port of Montreal. The Board also authorized a flow increase of up to 300 cms (10,600 cfs) for 24 hours on October 13, if the level of Lake St. Louis was expected to remain below 20.85 m (68.4 feet), to assist recreational boating interests on that Lake with seasonal haul-out and relocation.

Restoration of the water is done by releasing less water than specified by the regulation plan. The Board's goal is to restore as much water as possible by year end.

The total supply of water to the Lake Ontario basin in August was well below average and the lake level fell by 19 cm (7.5 in.) during the month, as compared to an average fall of about 14 cm (5.5 in.). On September 12, the level was 19 cm (7.5 in.) below average, but well within the mandated range specified in the criteria for the regulation of Lake Ontario levels.

Water levels on the upper Great Lakes (Lakes Superior and Michigan-Huron) are well below average. This is expected to exacerbate the already below-average levels on Lake Erie. With below-average supplies expected from Lake Erie, the forecast for Lake Ontario levels indicates that the levels will remain below average for the next several months if average amounts of precipitation are received. There is a significant chance (about 13%) that Lake Ontario levels will fall below the lower limit prescribed in the Orders of Approval before the end of November.

The level at Pointe Claire on Lake St. Louis has been at or near the Seaway 'alert level' (the level at which commercial ships begin to be impacted by low levels) since mid August. Water levels in Montreal Harbour are currently below chart datum and are expected to remain below unless conditions become much wetter. The levels are expected to remain well below average for the next several months, even if normal amounts of precipitation are received.

The unusual water supply conditions throughout the Great Lakes system this year and the possibility of the continuance of anomalies from the supplies and levels enjoyed in the past, emphasize the need for all interests to take a long-term view when planning their facilities and operations.

The Board, in conjunction with its staff, is monitoring the situation carefully and is prepared to take quick action if required. The Board will meet next month to assess the situation, or earlier if there is a significant change in conditions.

Abbreviations and Terms Used in this Report

actual (data)	the actual recorded value
avg	average
Board	International St. Lawrence River Board of Control (unless otherwise specified)
cfs	cubic feet per second
cm	centimetre(s)
cms	cubic metres per second
Commission	International Joint Commission
computed level, outflow	the level or outflow computed by Regulation Plan 1958-D
deviation (outflow)	a Lake Ontario outflow different from the Plan 1958-D outflow
exceedence probability	the percent of time that the value was exceeded in the past
ft	foot/feet
IJC	International Joint Commission
ISLRBC	International St. Lawrence River Board of Control
in	inche(s)
Lake level	Lake Ontario (unless otherwise specified) water level
LTA	long-term average
m	metres
m ³ /s	cubic metres per second
mm	millimetres
NYPA	New York Power Authority
OAG	the Board's Operations Advisory Group
OPG	Ontario Power Generation
Peaking Plan	hour-to-hour flow changes over the course of a day Regulation Plan 1958-D
Ponding	day-to-day flow changes over the course of a week
pre-project	the levels and outflows that would have occurred had regulation not been undertaken
regulation	management of levels and flows in the Lake Ontario-St. Lawrence River system by physical control of outflows from Lake Ontario
Regulation Plan 1958-D	current plan of regulation for Lake Ontario
Seaway Study Board	the St. Lawrence Seaway (commercial navigation facility) International Lake Ontario-St. Lawrence River Study Board
supply	quantity of water received
tcfs	thousand cubic feet per second