

**Public Meeting/Teleconference
September 21, 2010**

Dorval
Cornwall
Kingston
Watertown
Oswego
Rochester
Burlington

**Cornwall/Oswego
Call-in: 1-877-413-4814
716 7455 (English)
635 8331 (French)
Call between 6:45-7:55pm**

International St. Lawrence River Board of Control
September 21, 2010



Regulation of Lake Ontario follows:

- Boundary Waters Treaty of 1909
 - Established the IJC
 - Set order of precedence of interests
- 1952 IJC Order of Approval
 - Approved construction of hydropower projects which allowed outflows to be controlled
- 1956 Supplementary Order
 - Defined criteria consistent with the Treaty
- Plan 1958-D
 - Established method to manage flow from Lake Ontario



WATER LEVELS

	Actual*	Compared To	
	16 Sept 2010	Average**	Last Year
Lake Superior	183.20 m (601.05 ft.)	-34 cm (-13 in.)	-21 cm (-8 in.)
Lake Michigan-Huron	176.12 m (577.82 ft.)	-39 cm (-15 in.)	-24 cm (-9 in.)
Lake Erie	174.01 m (570.90 ft.)	-15 cm (-6 in.)	-26 cm (-10 in.)
Lake Ontario	74.70 m (245.08 ft.)	-4 cm (-2 in.)	-7 cm (-3 in.)
Lake St. Lawrence	73.18 m (240.09 ft.)	+1 cm (+0.4 in.)	+25 cm (+10 in.)
Lake St. Louis	20.95 m (68.73 ft.)	-19 cm (-7 in.)	-21 cm (-8 in.)
Montreal Harbour	5.68 m (18.64 ft.)	-54 cm (-21 in.)	-33 cm (-13 in.)

*Preliminary.

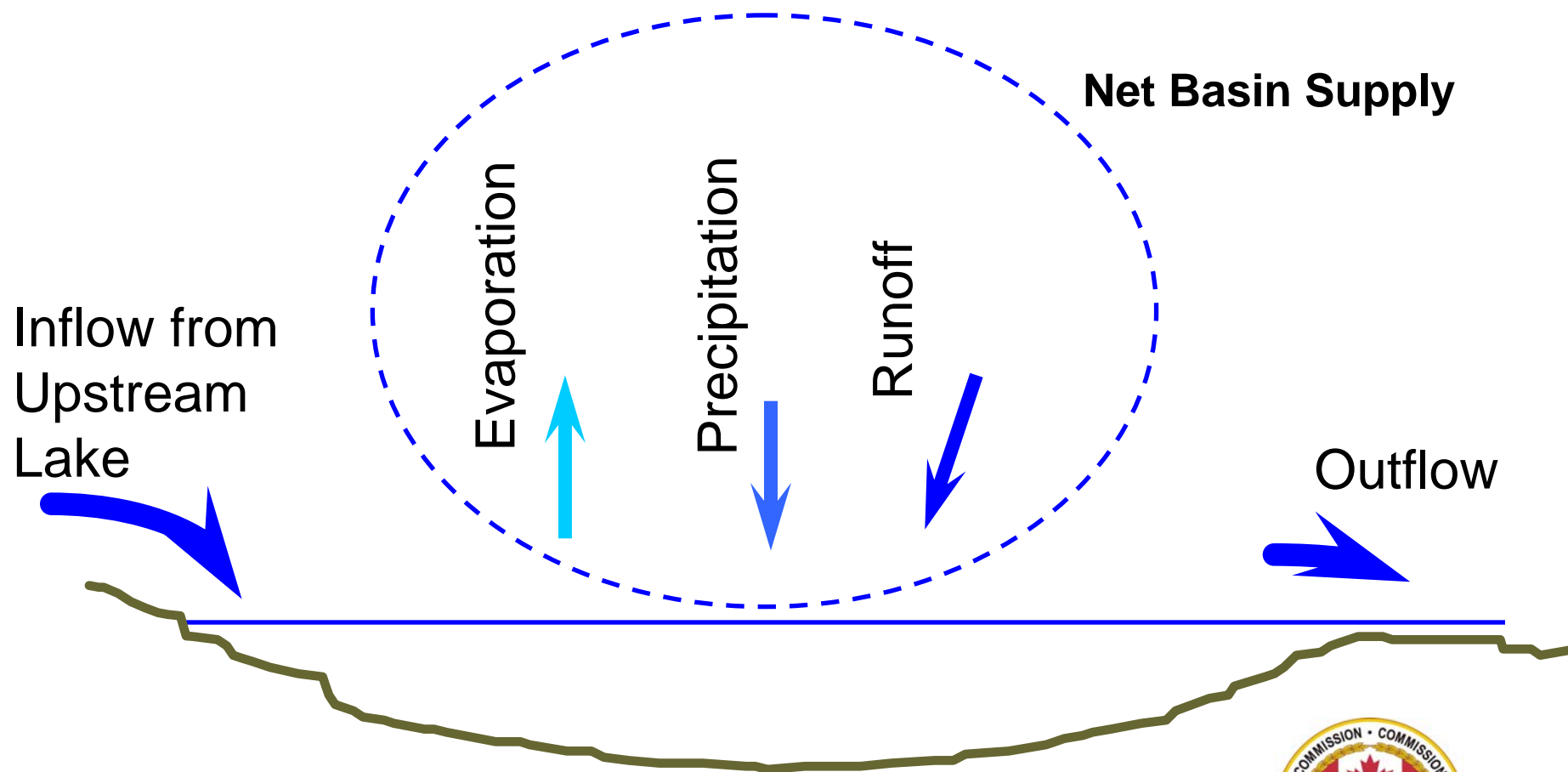
**Statistics: Great Lakes: 1918-2009; St. Lawrence River: 1960-2009; Montreal: 1967-2009.

International St. Lawrence River Board of Control
September 21, 2010



Great Lakes Water Supplies

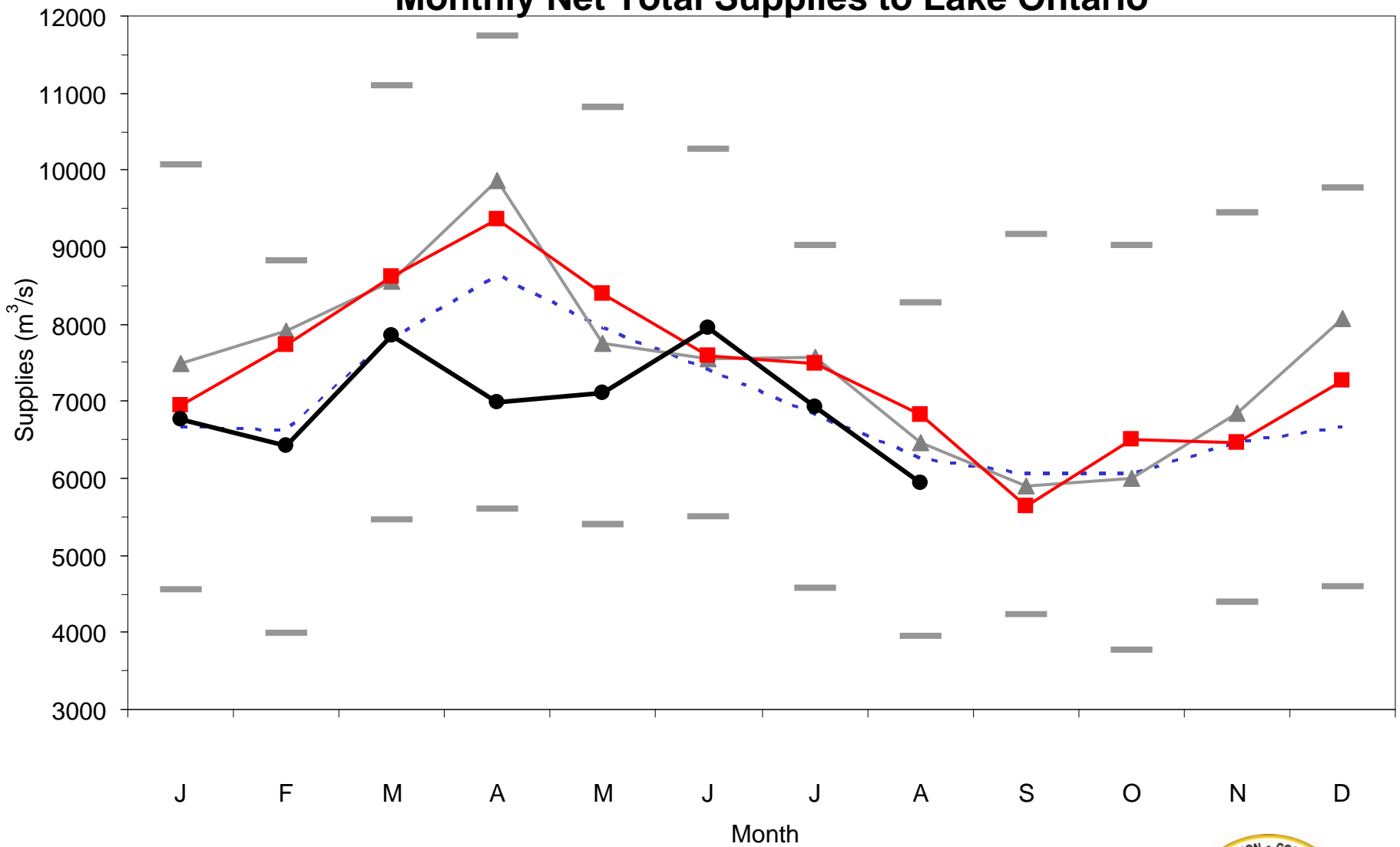
(Factors Affecting Water Levels)



International St. Lawrence River Board of Control
September 21, 2010



Monthly Net Total Supplies to Lake Ontario



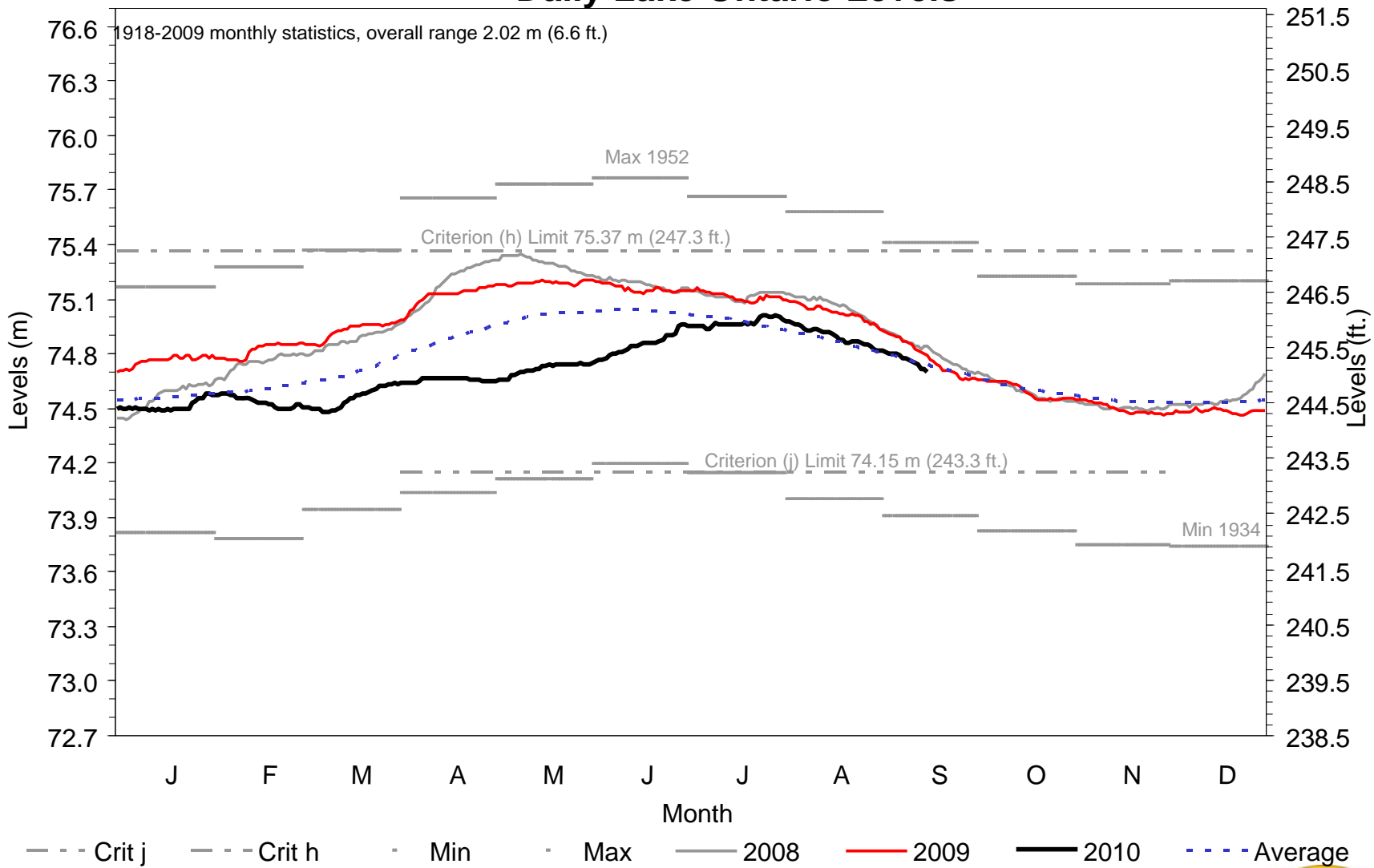
Min
 Max
 Avg (1900-2009)
 2008
 2009
 2010

International St. Lawrence River Board of Control

September 21, 2010



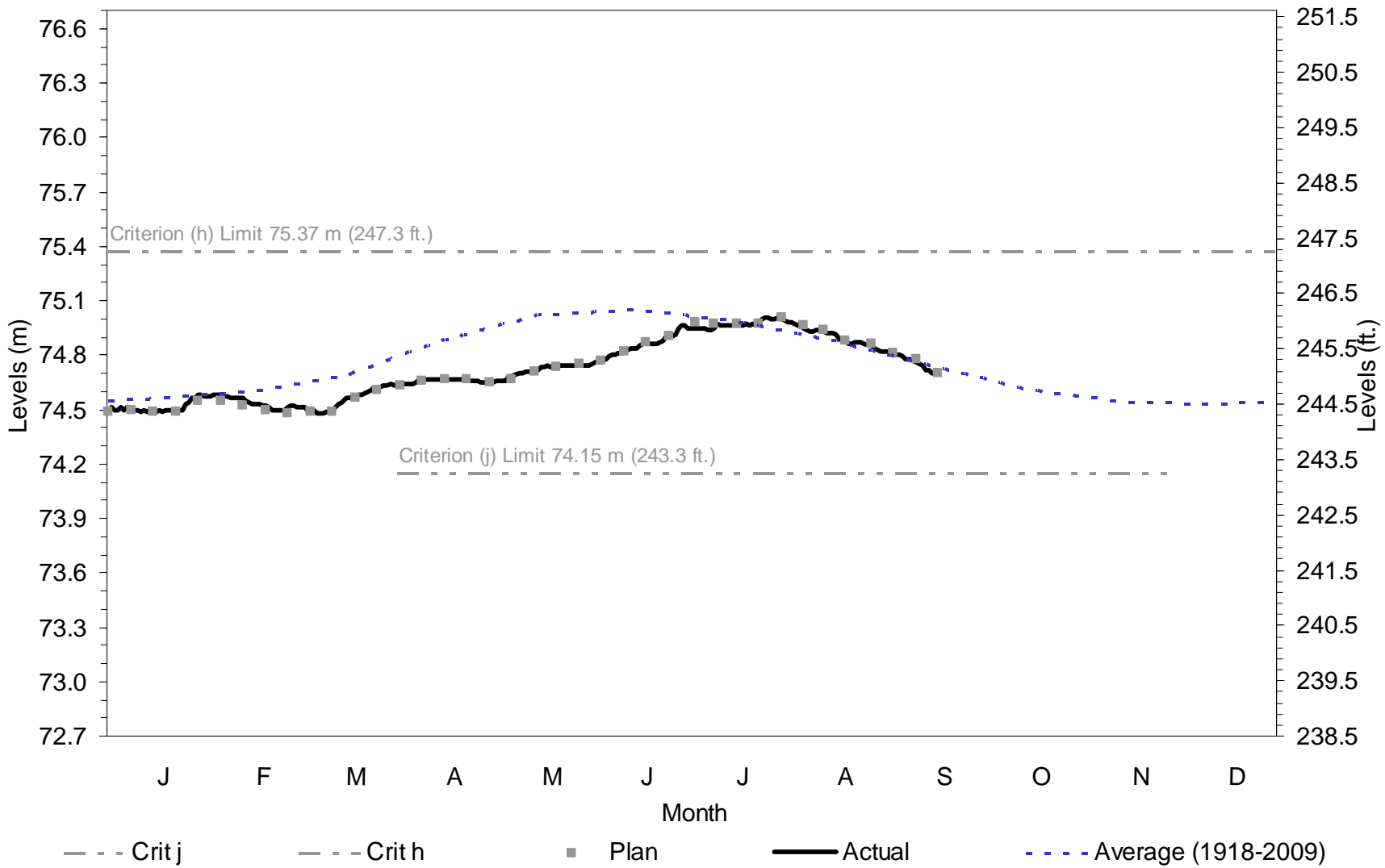
Daily Lake Ontario Levels



International St. Lawrence River Board of Control
September 21, 2010



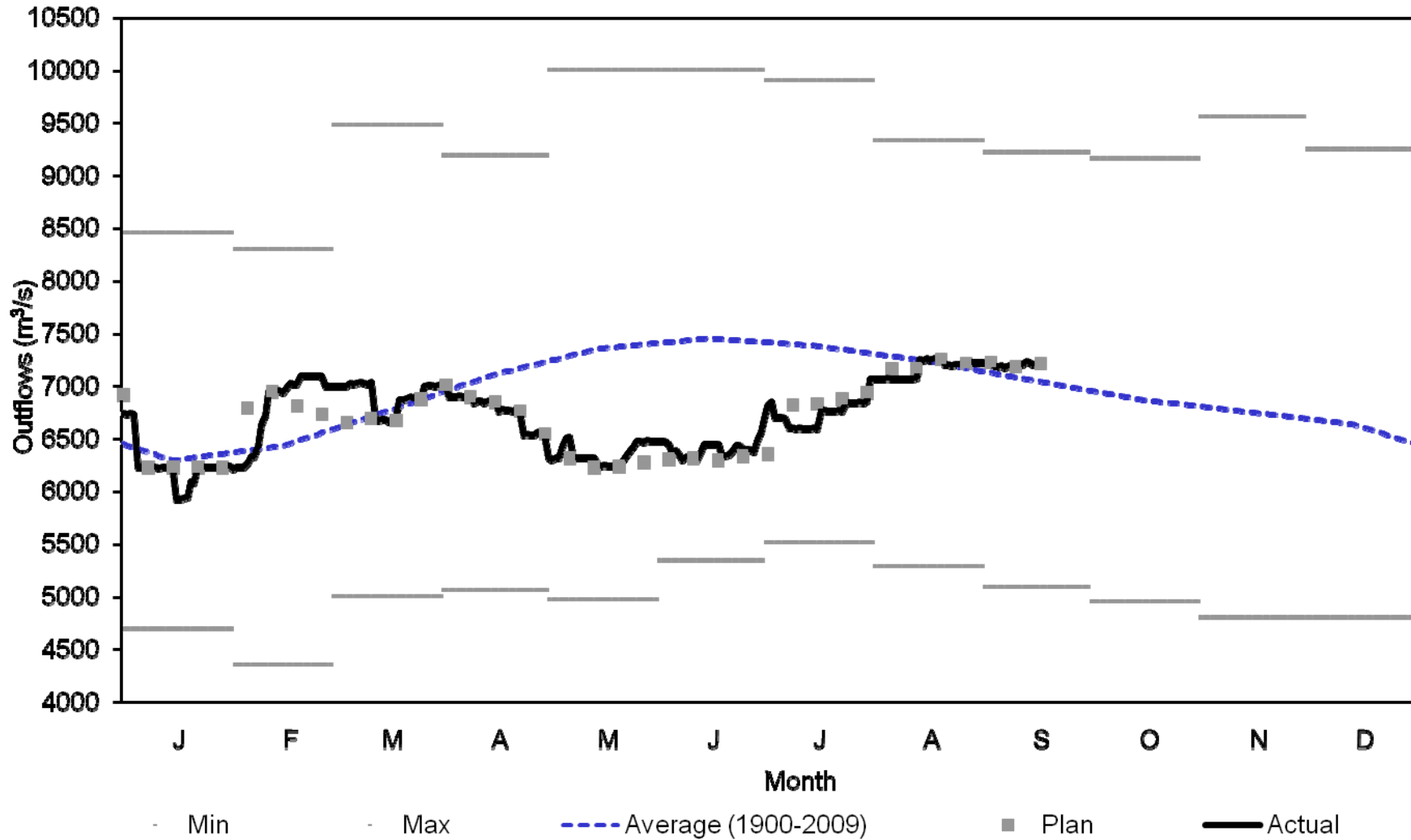
2010 Actual and Plan Levels (m)



International St. Lawrence River Board of Control
September 21, 2010



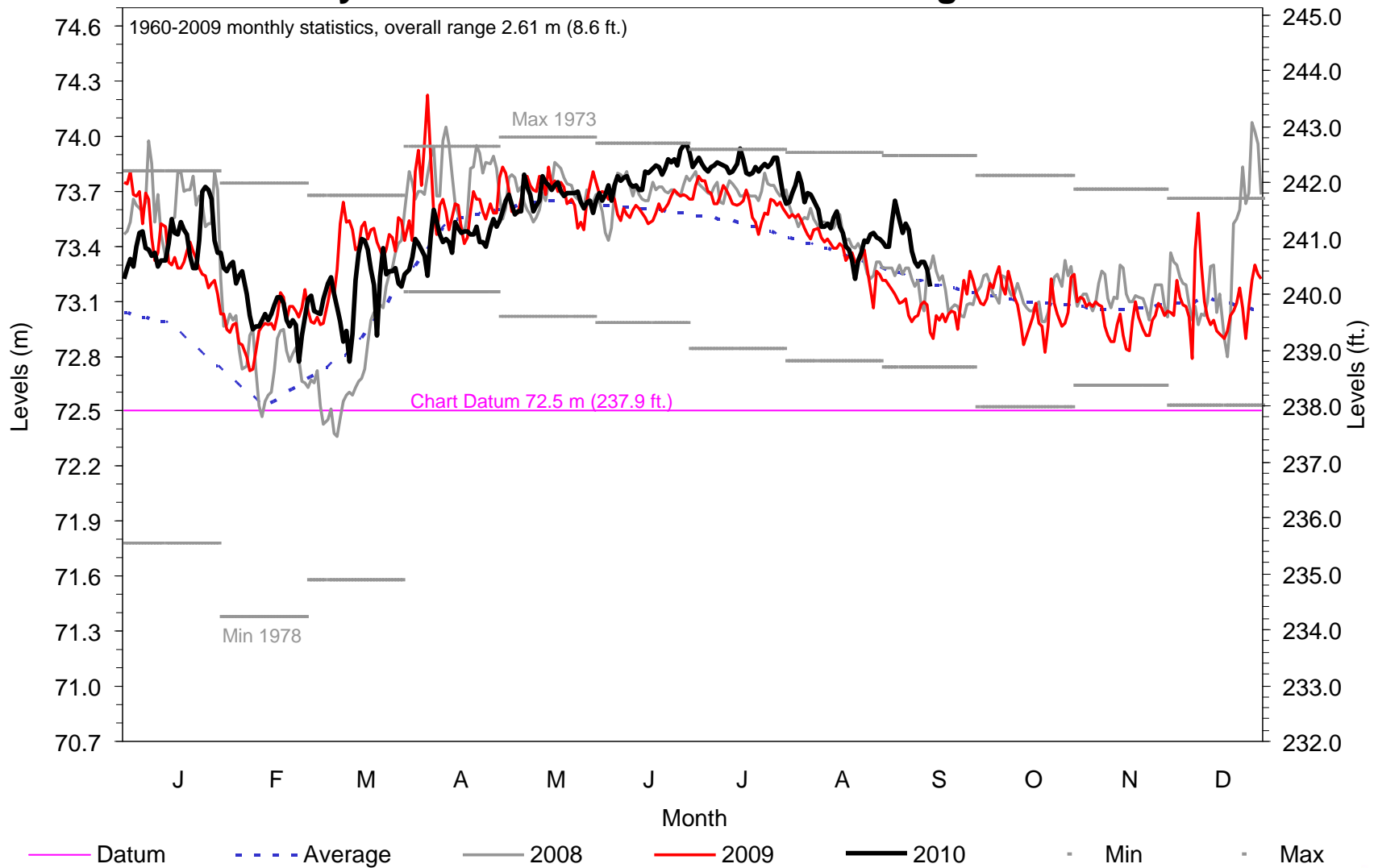
2010 Lake Ontario Daily Outflows (m³/s)



International St. Lawrence River Board of Control
September 21, 2010



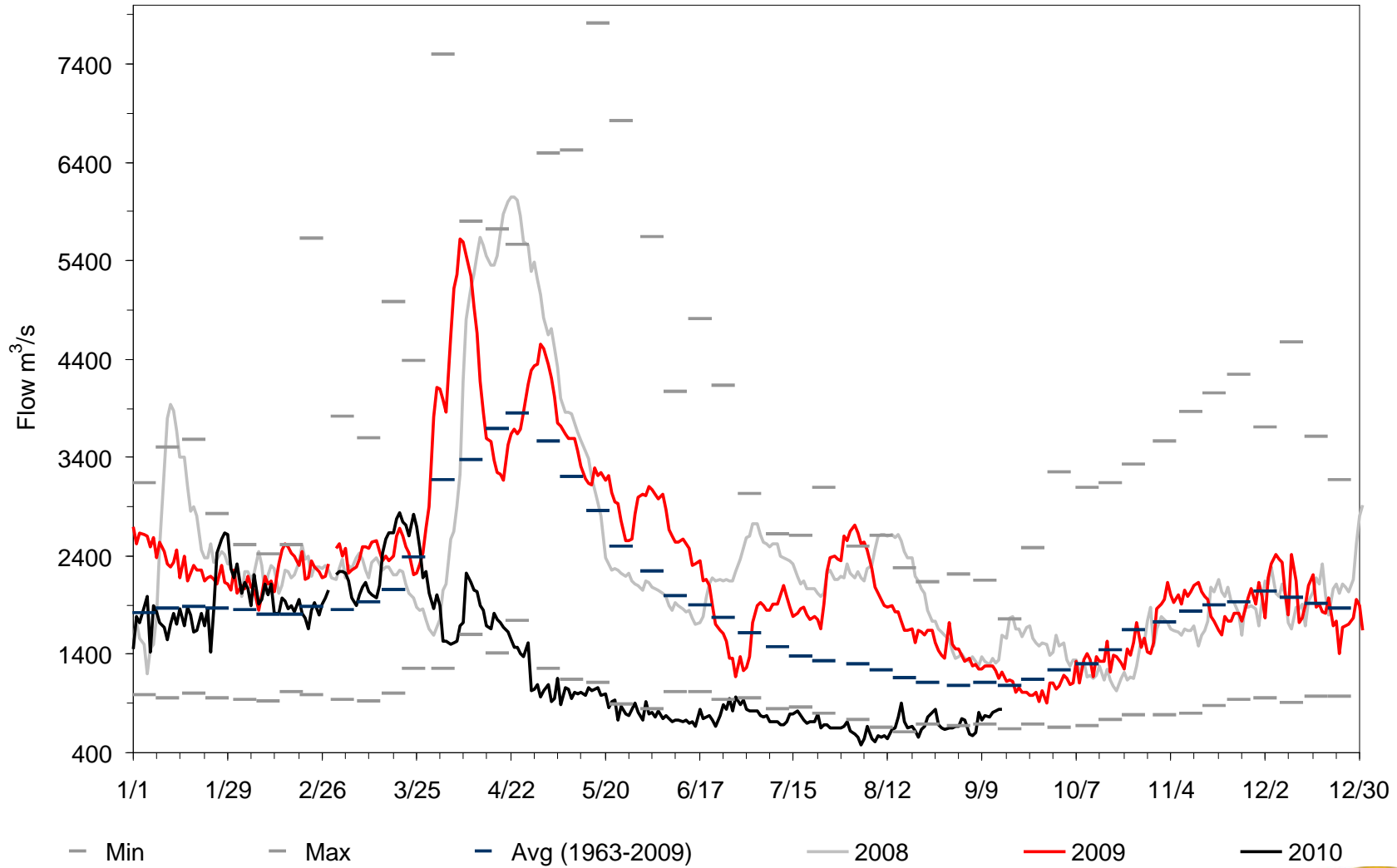
Daily Lake St. Lawrence Levels @ Long Sault Dam



International St. Lawrence River Board of Control
September 21, 2010



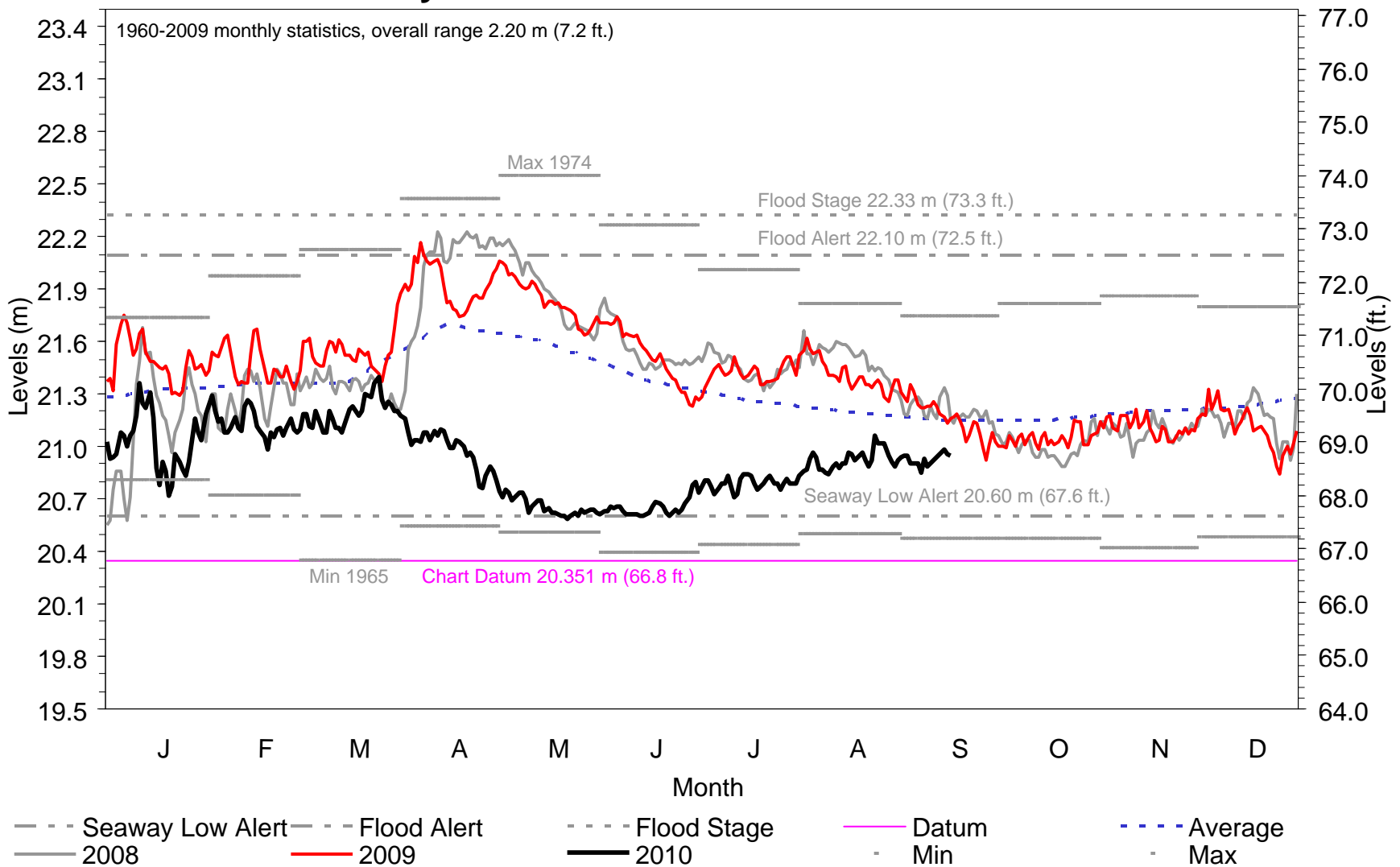
Daily Ottawa River Flow @ Carillon



International St. Lawrence River Board of Control
September 21, 2010



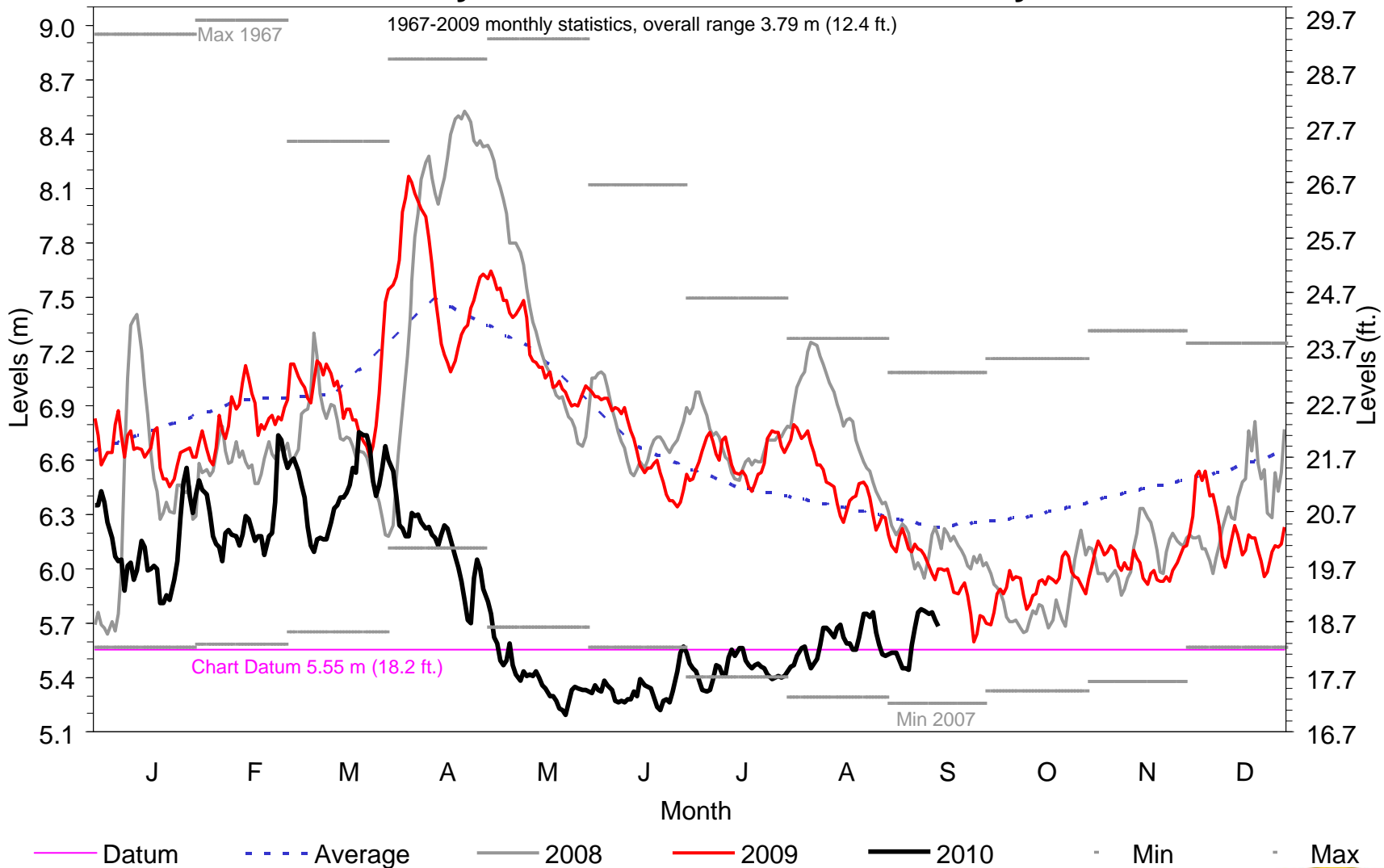
Daily Lake St. Louis Levels @ Pointe-Claire



International St. Lawrence River Board of Control
September 21, 2010



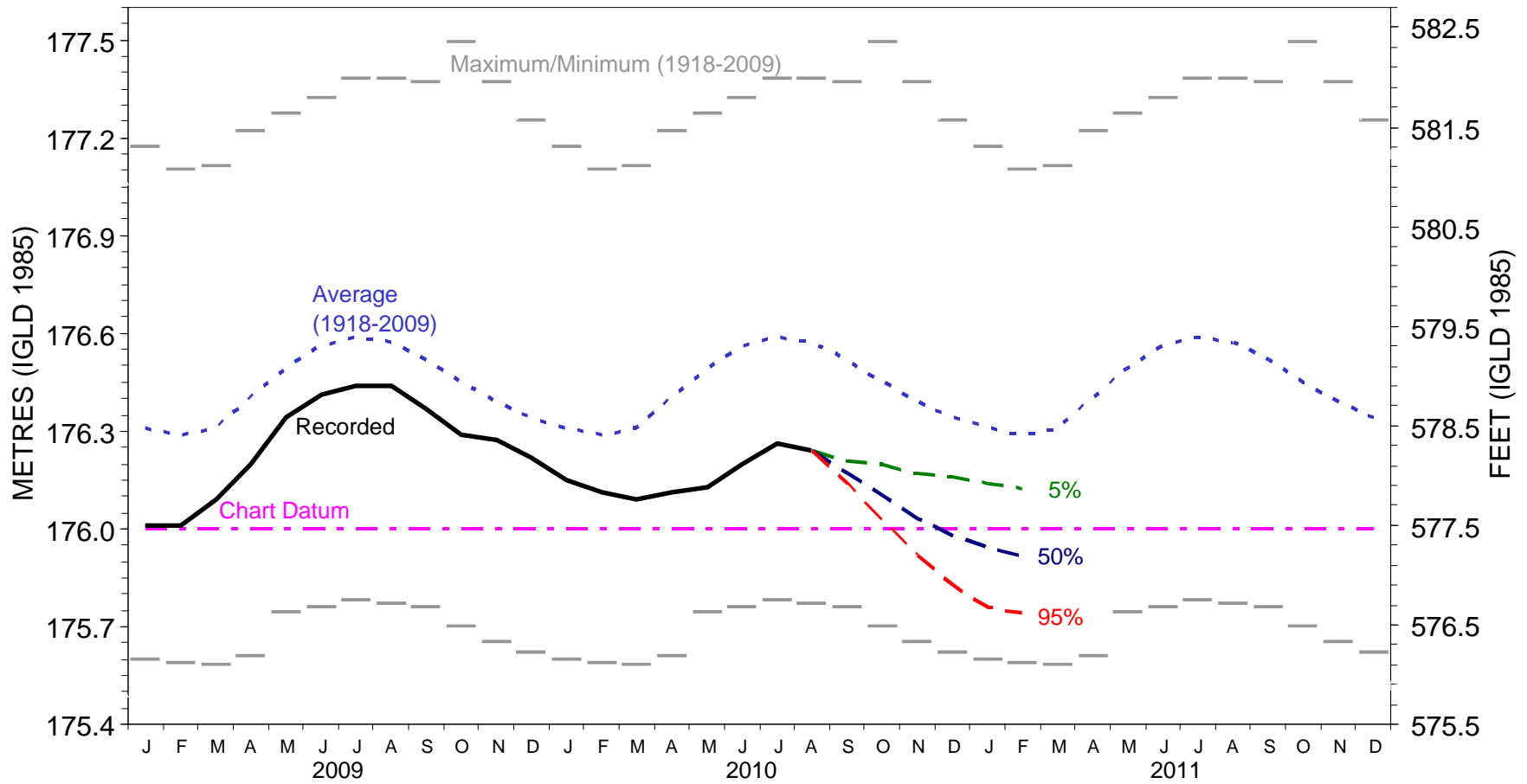
Daily Port of Montreal Levels @ Jetty #1



International St. Lawrence River Board of Control
September 21, 2010



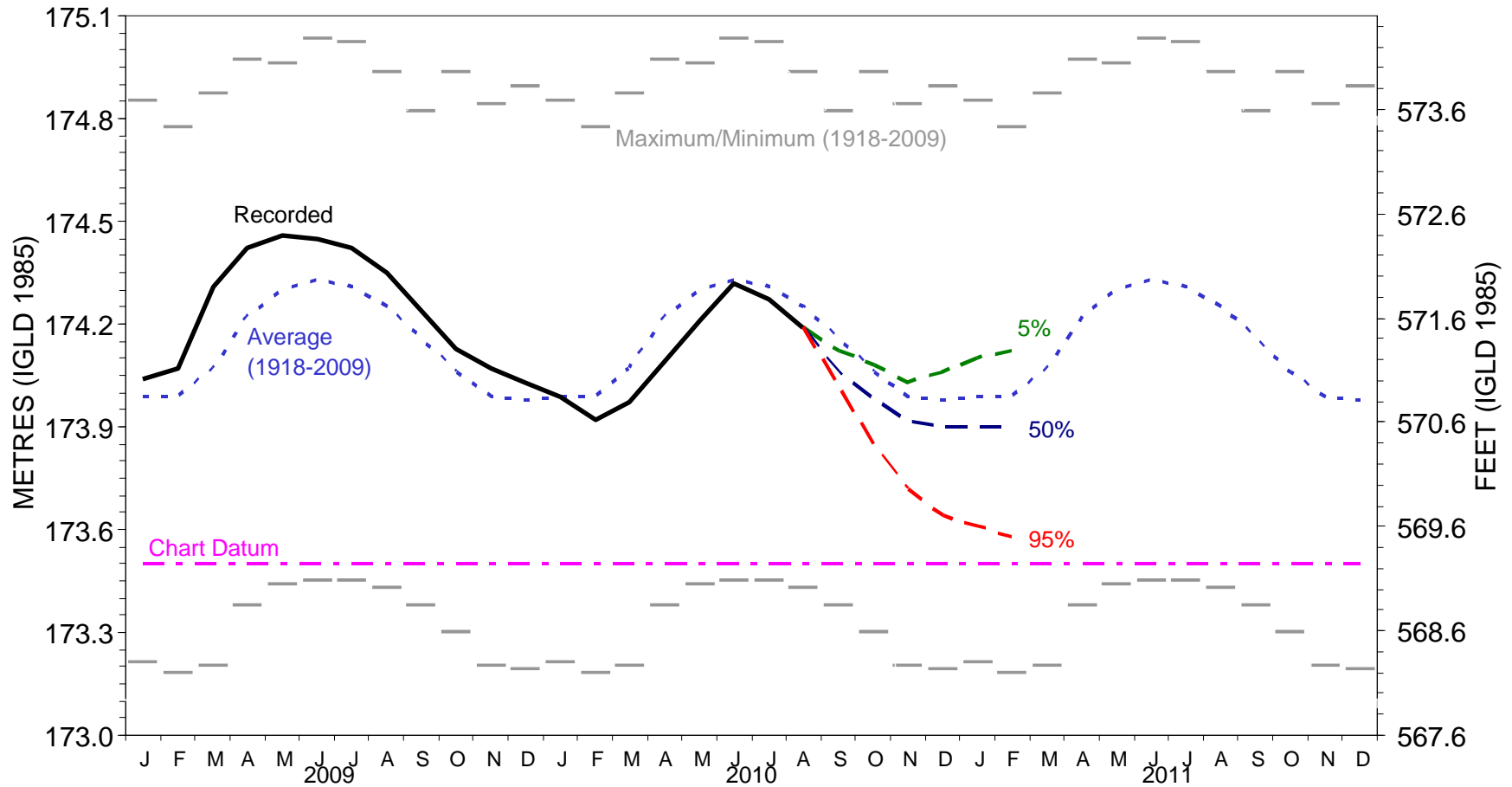
LAKES MICHIGAN-HURON MONTHLY WATER LEVEL FORECAST



International St. Lawrence River Board of Control
September 21, 2010



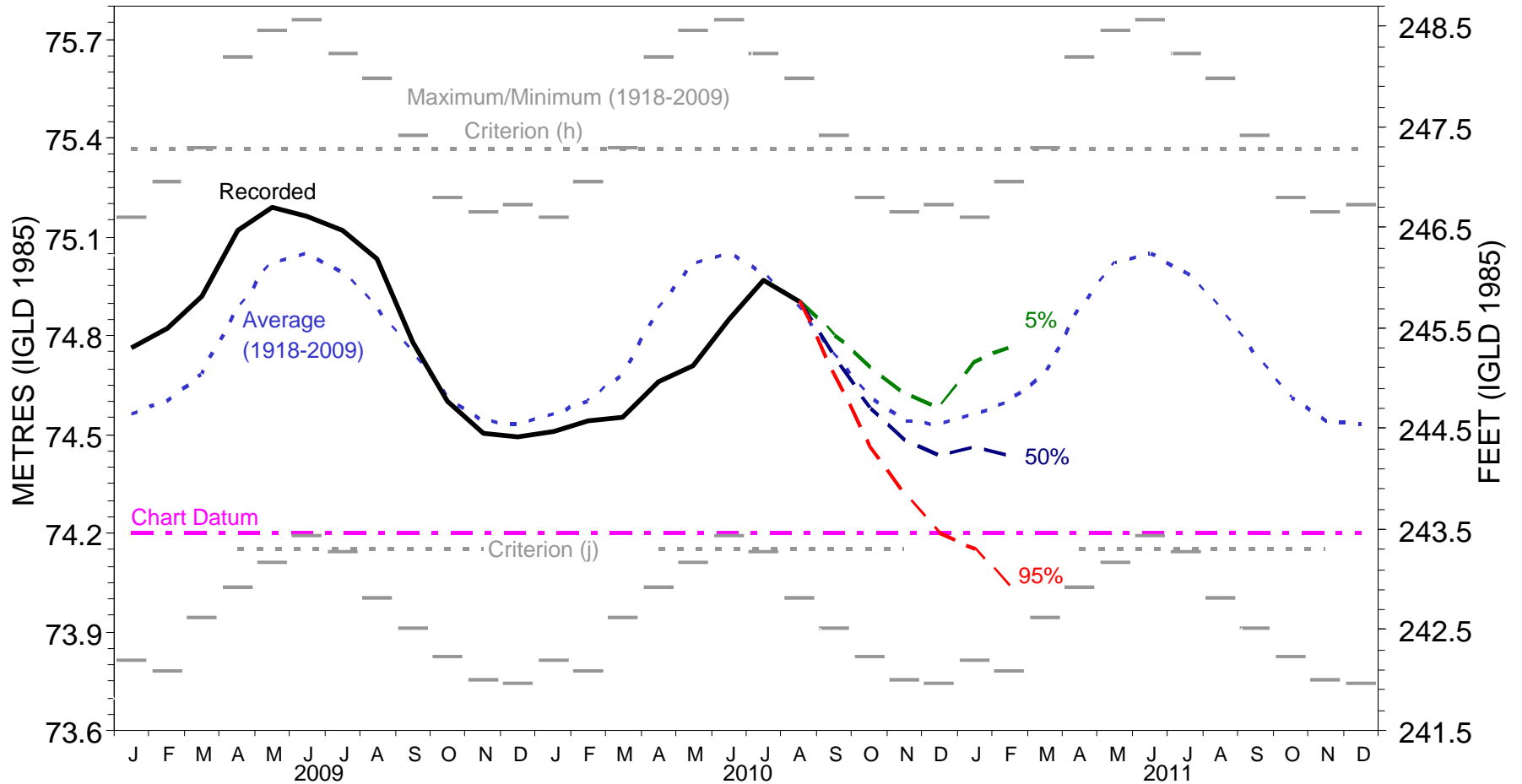
LAKE ERIE MONTHLY WATER LEVEL FORECAST



International St. Lawrence River Board of Control
September 21, 2010



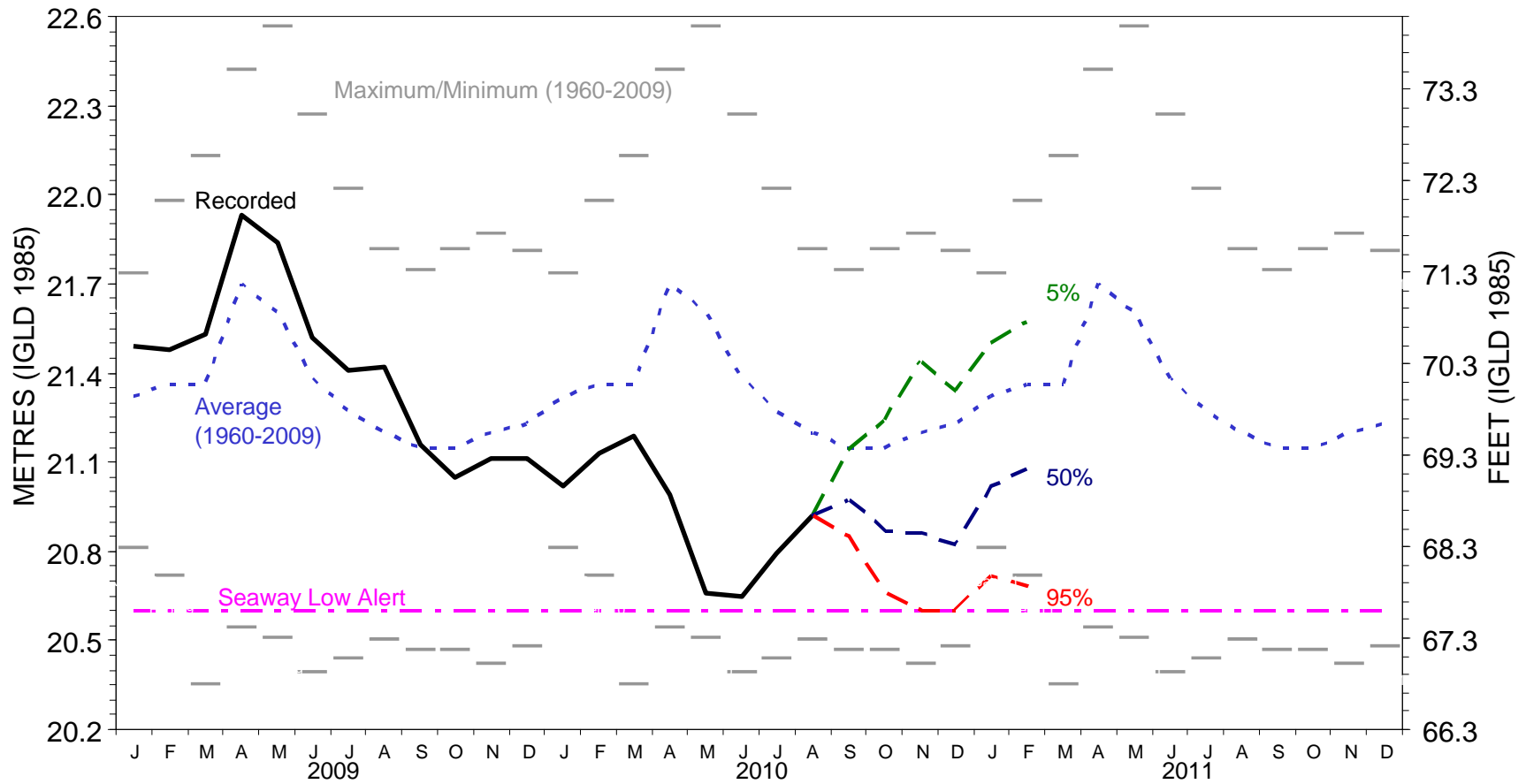
LAKE ONTARIO MONTHLY WATER LEVEL FORECAST



International St. Lawrence River Board of Control
September 21, 2010



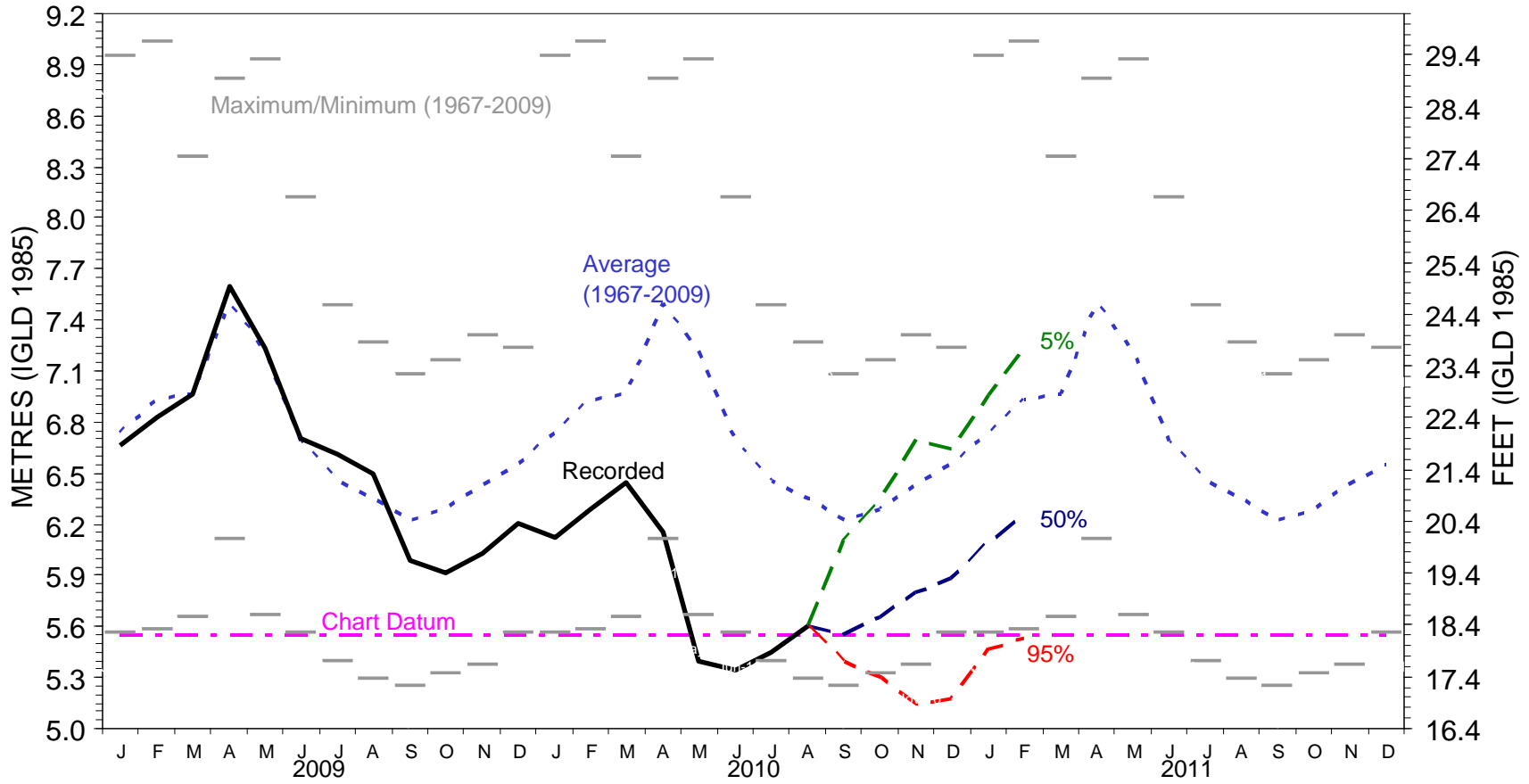
LAKE ST. LOUIS MONTHLY WATER LEVEL FORECAST



International St. Lawrence River Board of Control
September 21, 2010



MONTREAL HARBOUR MONTHLY WATER LEVEL FORECAST



International St. Lawrence River Board of Control
 September 21, 2010



Hydrology Highlights

- Spring melt was early and lower than average on both Lake Ontario and Ottawa River basins.
- Ottawa River flows were the lowest on record for April through August and continue to be below average.
- Levels of Lake Ontario and the St. Lawrence both in the Thousand Islands and near Montreal were unusually low in the spring.
- Board augmented Lake Ontario outflow in May and June to keep Lake St Louis above Seaway Alert level.
- New monthly rainfall maximum for June raised Lake Ontario levels to near average by July, although Montreal levels were and are still low.
- The flow augmentation resulted in Lake Ontario being at most 2.5 cm (1 inch) lower than the level specified by the Plan by early July, but since then it has reached Plan levels.

International St. Lawrence River Board of Control
September 21, 2010



Proposed Regulation Strategy

Release outflows in accordance with Regulation Plan 1958-D (and currently, the Lake Ontario level is the same as the level computed by the Plan; i.e., there are no accumulated deviations).

If a critical situation arises, the outflows may be other than Plan-specified temporarily.

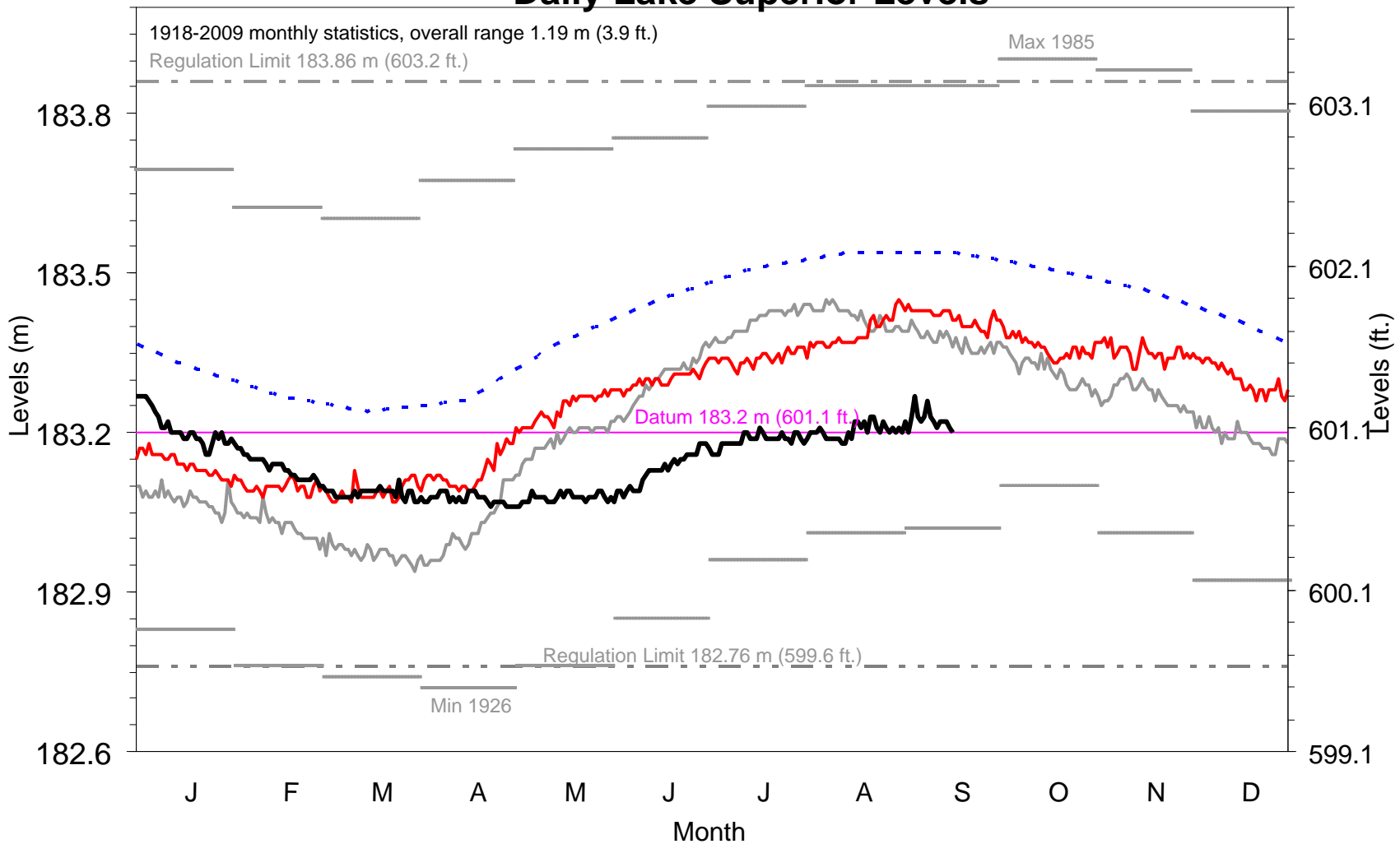


Additional Information

International St. Lawrence River Board of Control
September 21, 2010



Daily Lake Superior Levels

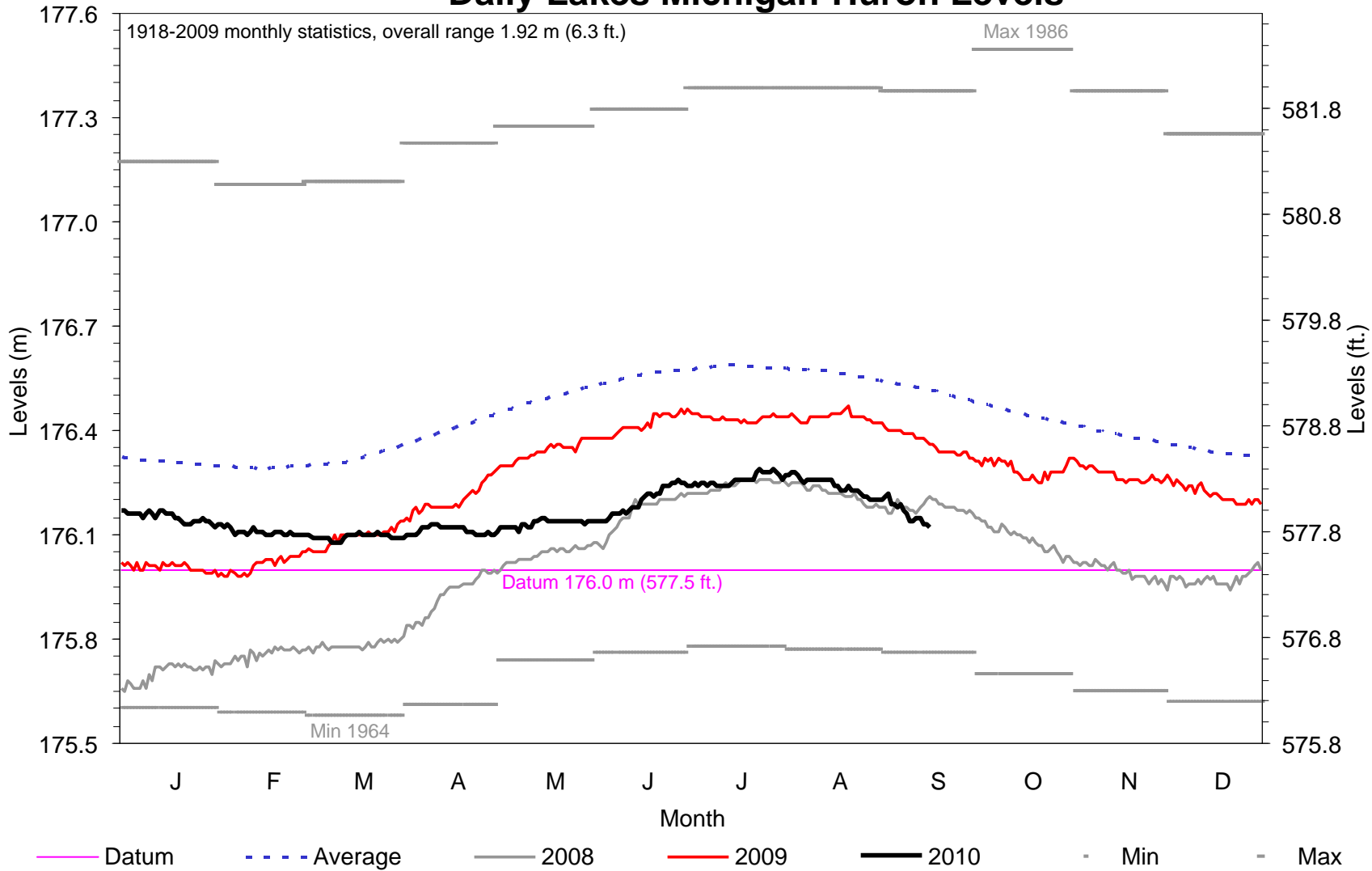


--- Low Limit --- Hi Limit — Datum - - - Average — 2008 — 2009 — 2010 - - - Min - - - Max

International St. Lawrence River Board of Control
 September 21, 2010



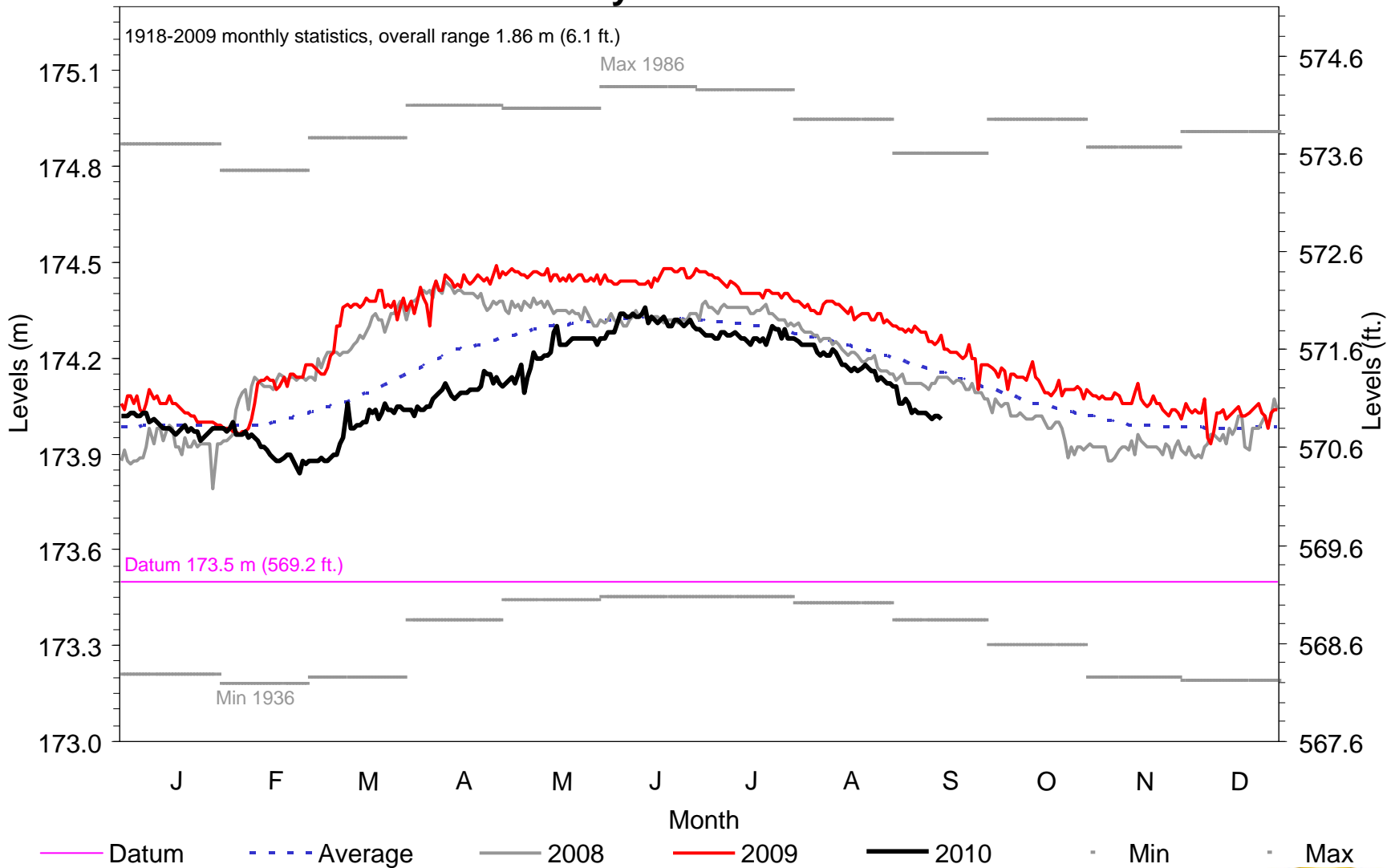
Daily Lakes Michigan-Huron Levels



International St. Lawrence River Board of Control
September 21, 2010



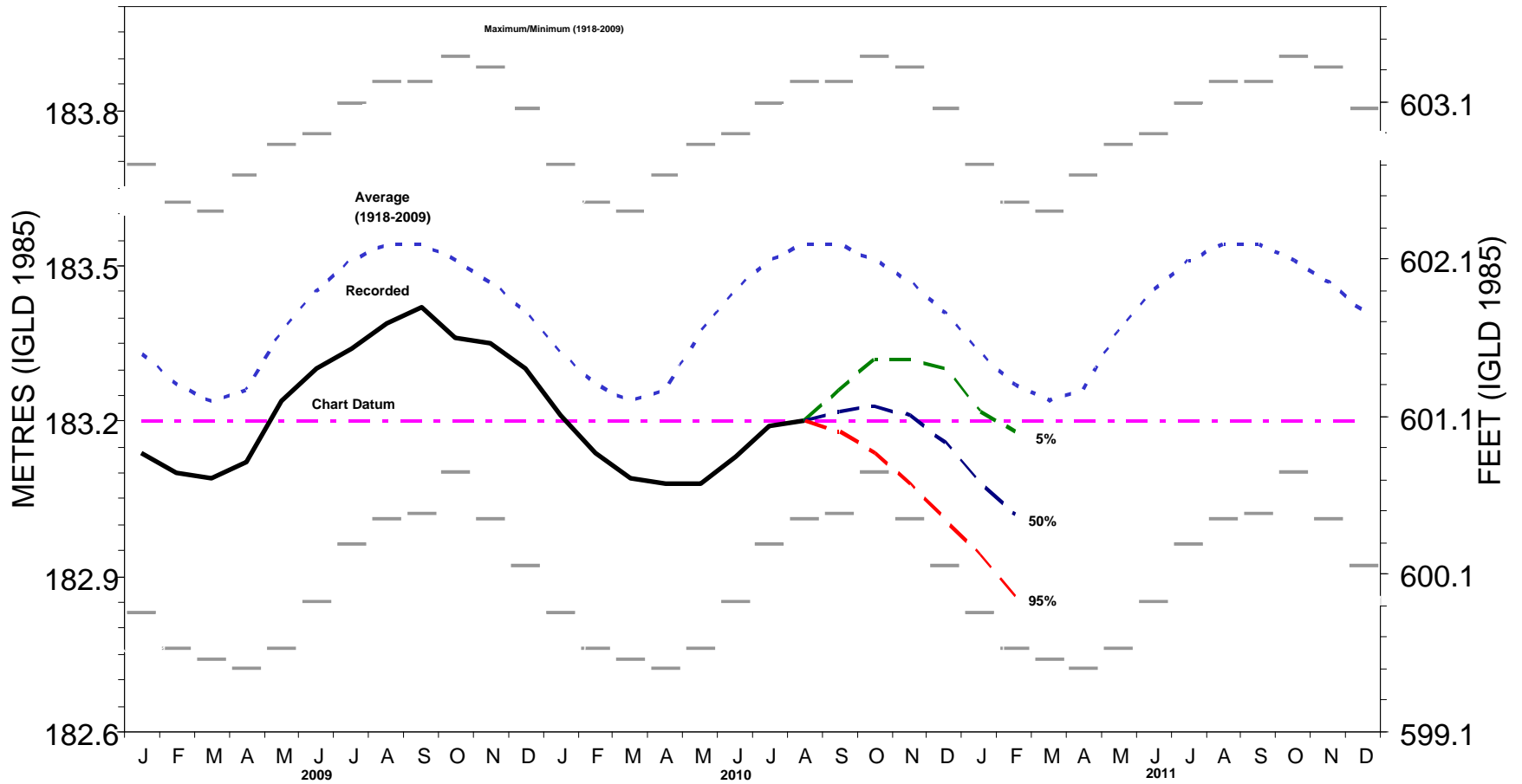
Daily Lake Erie Levels



International St. Lawrence River Board of Control
September 21, 2010



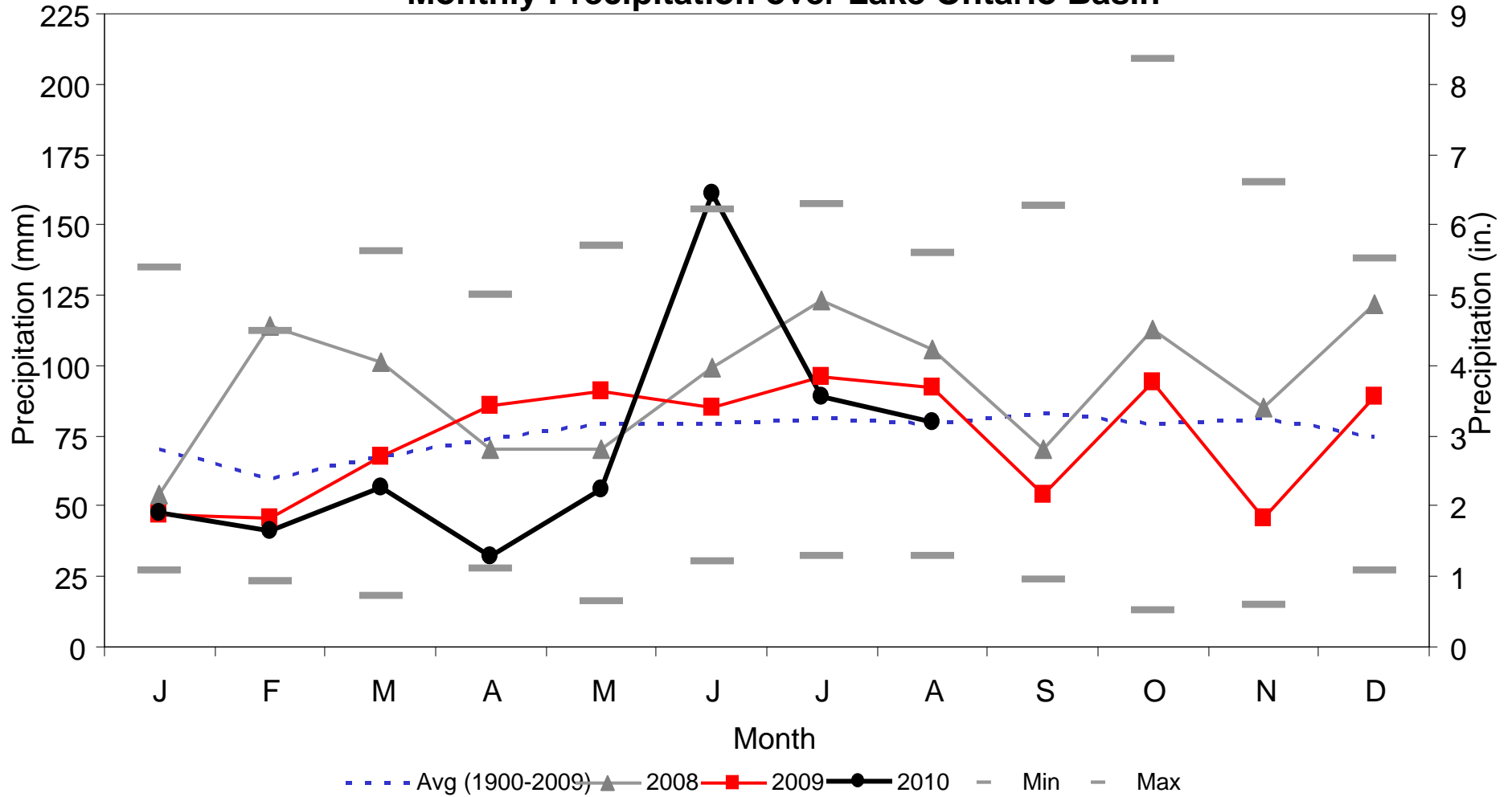
LAKE SUPERIOR MONTHLY WATER LEVEL FORECAST



International St. Lawrence River Board of Control
September 21, 2010



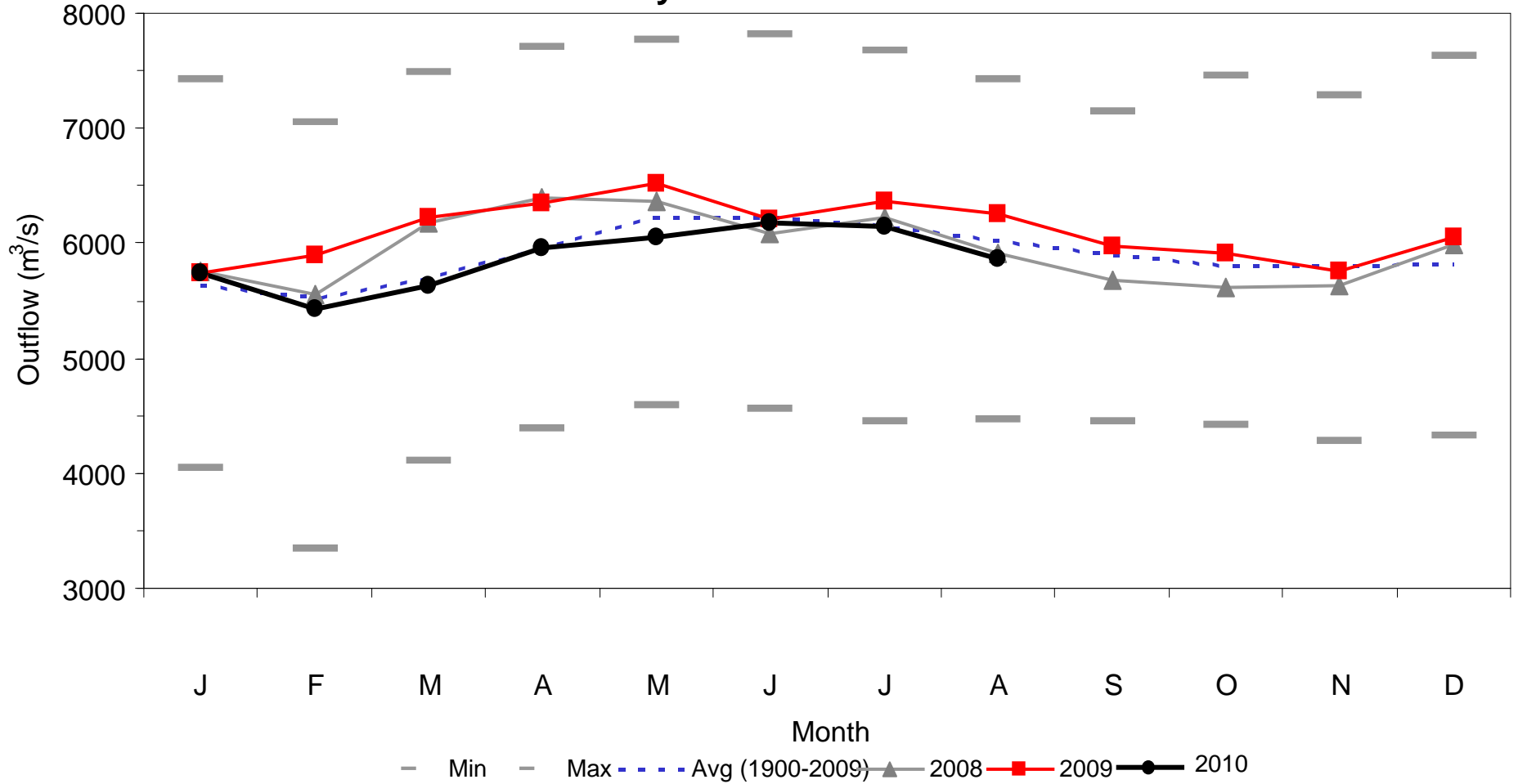
Monthly Precipitation over Lake Ontario Basin



International St. Lawrence River Board of Control
September 21, 2010



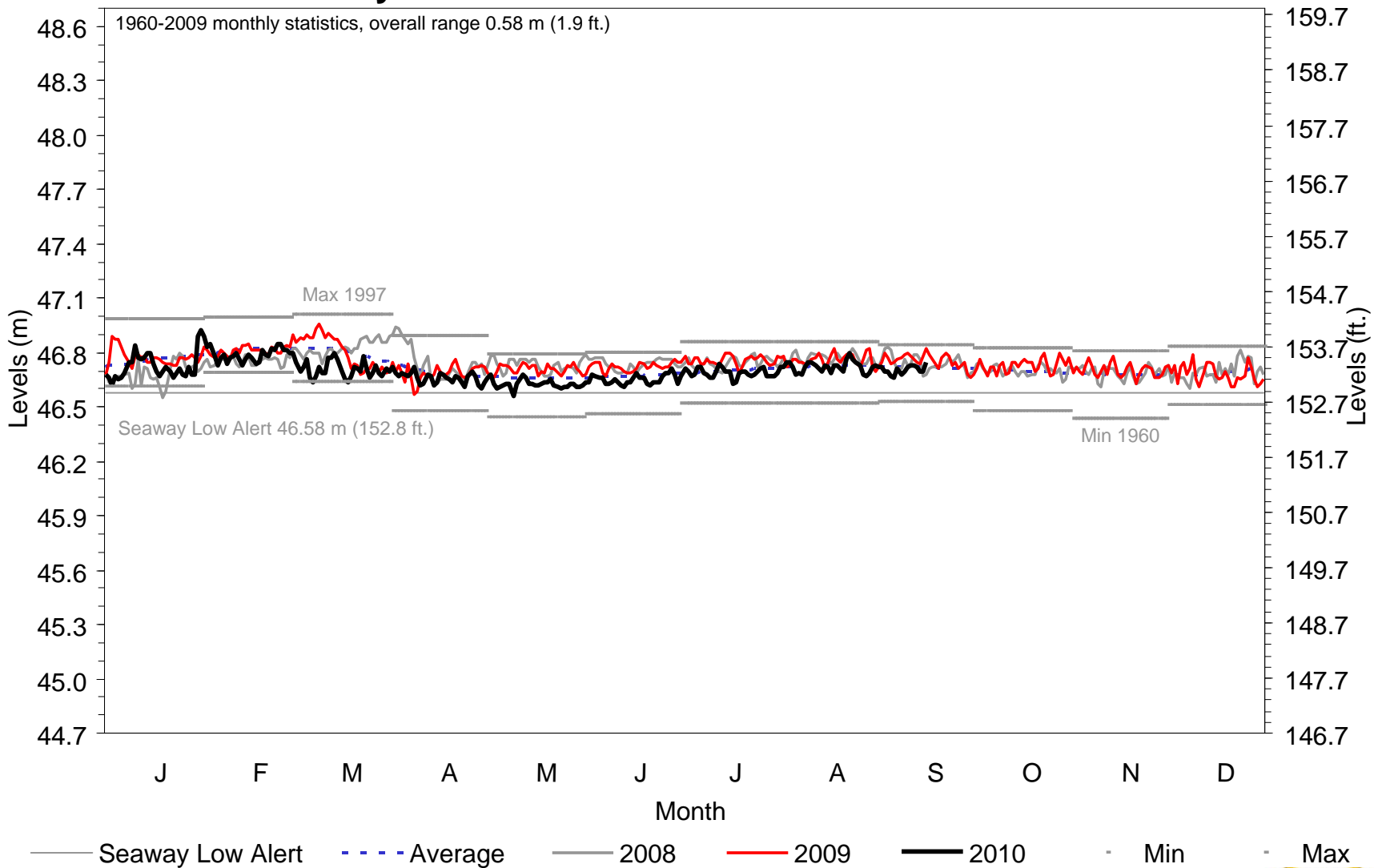
Monthly Lake Erie Outflows



International St. Lawrence River Board of Control
September 21, 2010



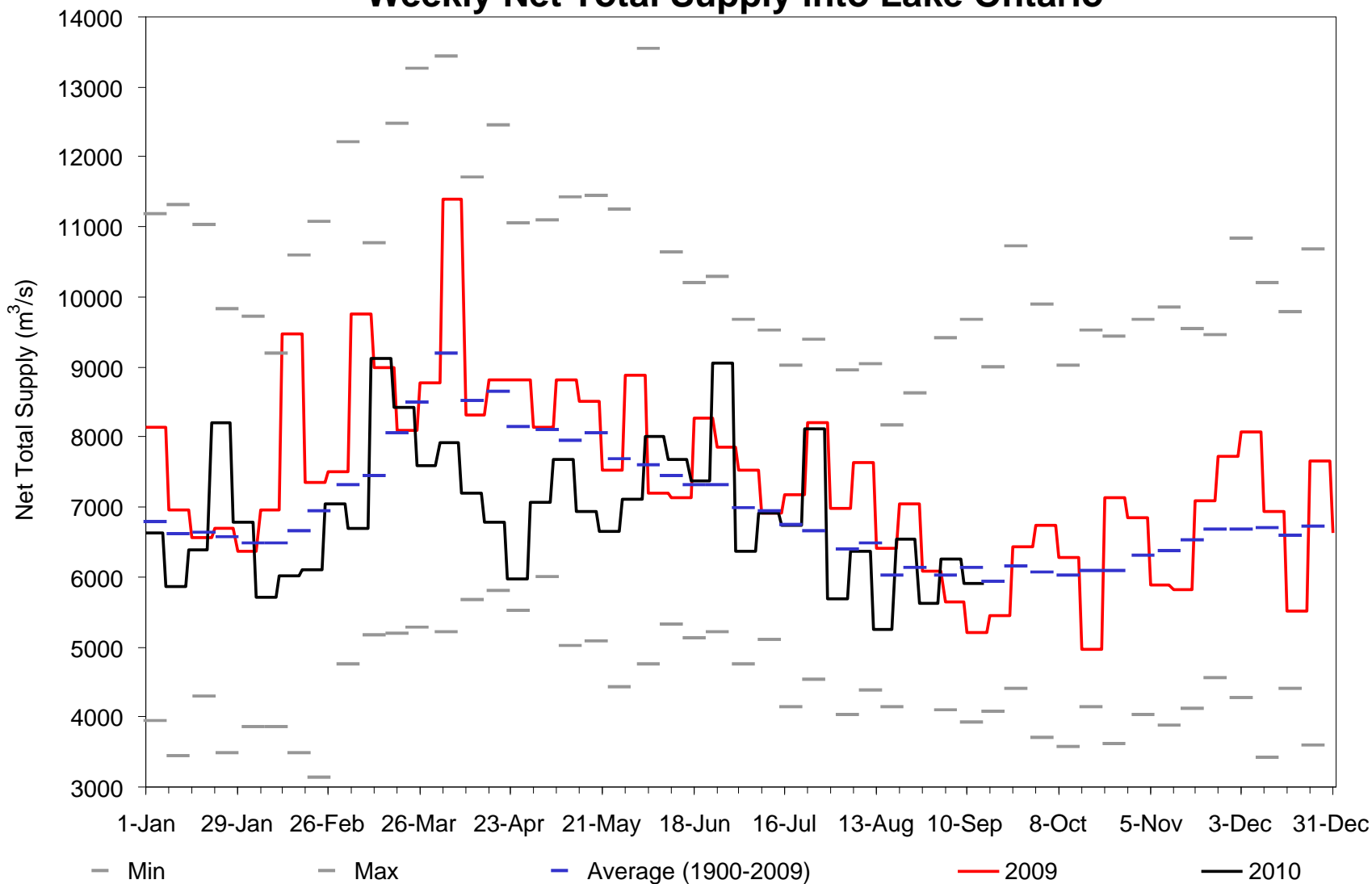
Daily Lake St. Francis Levels @ Summerstown



International St. Lawrence River Board of Control
September 21, 2010



Weekly Net Total Supply into Lake Ontario



International St. Lawrence River Board of Control
September 21, 2010



Summary of IJC Criteria (1956)

- a) Don't reduce minimum level at Montreal Harbour below level which would have occurred in the past with like supplies (unregulated)
- b) Winter flows as high as feasible
- c) Flow during breakup in Montreal Harbour no greater than unregulated
- d) Flow during Ottawa River freshet no greater than unregulated
- e) Keep minimum flows as high as feasible
- f) Keep maximum flows as low as possible

International St. Lawrence River Board of Control

September 21, 2010



Summary of IJC Criteria (continued)

- g) Reduce extremes in Lake Ontario levels
- h) Maximum monthly mean Lake Ontario level 75.37 m (247.3 ft).
- i) Reduce frequency of monthly mean levels above 75.07 m (246.3 ft) compared to unregulated.
- j) Minimum monthly mean Lake Ontario level in navigation season 74.15 m (243.3 ft).
- k) If supplies **greater** than past, operate to benefit riparians.
If supplies **less** than past, operate for navigation and power.

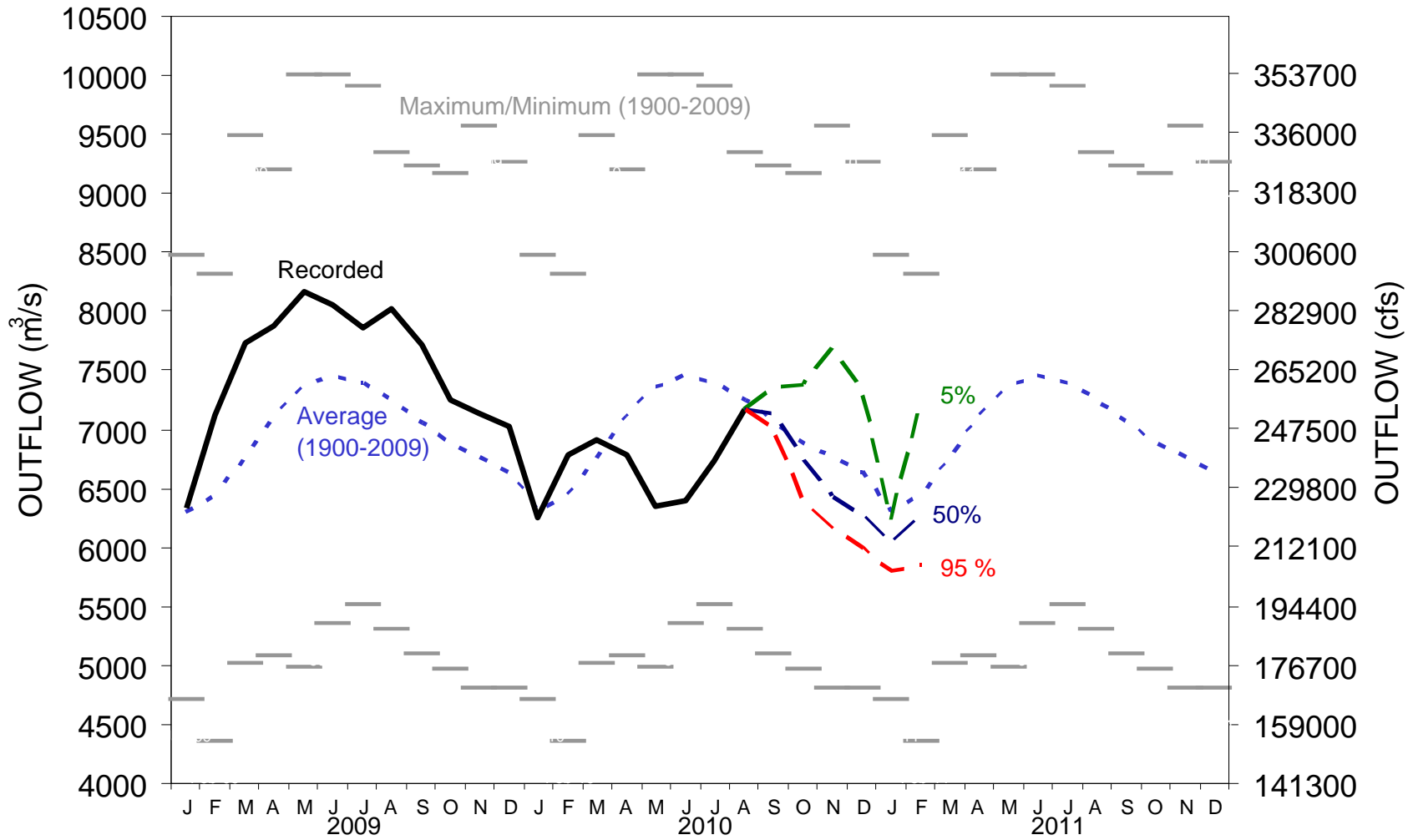


IJC Orders also specify:

- Minimum levels for navigation in Lake St. Lawrence
- Maximum current velocity in river to maintain safe navigation
- Iroquois Dam to limit high levels on Lake St. Lawrence



LAKE ONTARIO MONTHLY OUTFLOW FORECAST



International St. Lawrence River Board of Control
September 21, 2010

