



**Media Teleconference
20 June 2011**

**Call-in
1-877-413-4788 (English)
Passcode: 6378241#
Call between 1-2 pm**

Lake Ontario - St. Lawrence River Drainage Basin

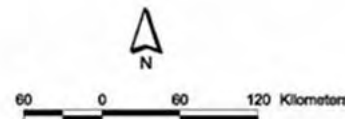


Moses-Saunders dam between Cornwall and Massena controls water flows from Lake Ontario into the St. Lawrence River.



Legend

- Cities
- - - International Border
- St. Lawrence River Drainage Basin
- Lake Ontario Drainage Basin



Regulation of Lake Ontario follows:

- Boundary Waters Treaty of 1909
 - Established the IJC
 - Set order of precedence of interests
- 1952 IJC Order of Approval
 - Approved construction of hydropower projects which allowed outflows to be controlled
- 1956 Supplementary Order
 - Defined criteria consistent with the Treaty
- Plan 1958-D
 - Established method to manage flow from Lake Ontario

WATER LEVELS

	Actual* 16 June 2011	Compared To	
		Average**	Last Year
Lake Superior	183.13 m (600.82 ft.)	-32 cm (-13 in.)	0 cm (0 in.)
Lake Michigan-Huron	176.20 m (578.08 ft.)	-35 cm (-14 in.)	0 cm (0 in.)
Lake Erie	174.55 m (572.67 ft.)	22 cm (9 in.)	24 cm (9 in.)
Lake Ontario	75.34 m (247.18 ft.)	29 cm (11 in.)	49 cm (19 in.)
Lake St. Lawrence	73.57 m (241.37 ft.)	-5 cm (-2 in.)	-14 cm (-6 in.)
Lake St. Louis	21.69 m (71.16 ft.)	34 cm (13 in.)	107 cm (42 in.)
Montreal Harbour	6.93 m (22.74 ft.)	27 cm (11 in.)	162 cm (64 in.)

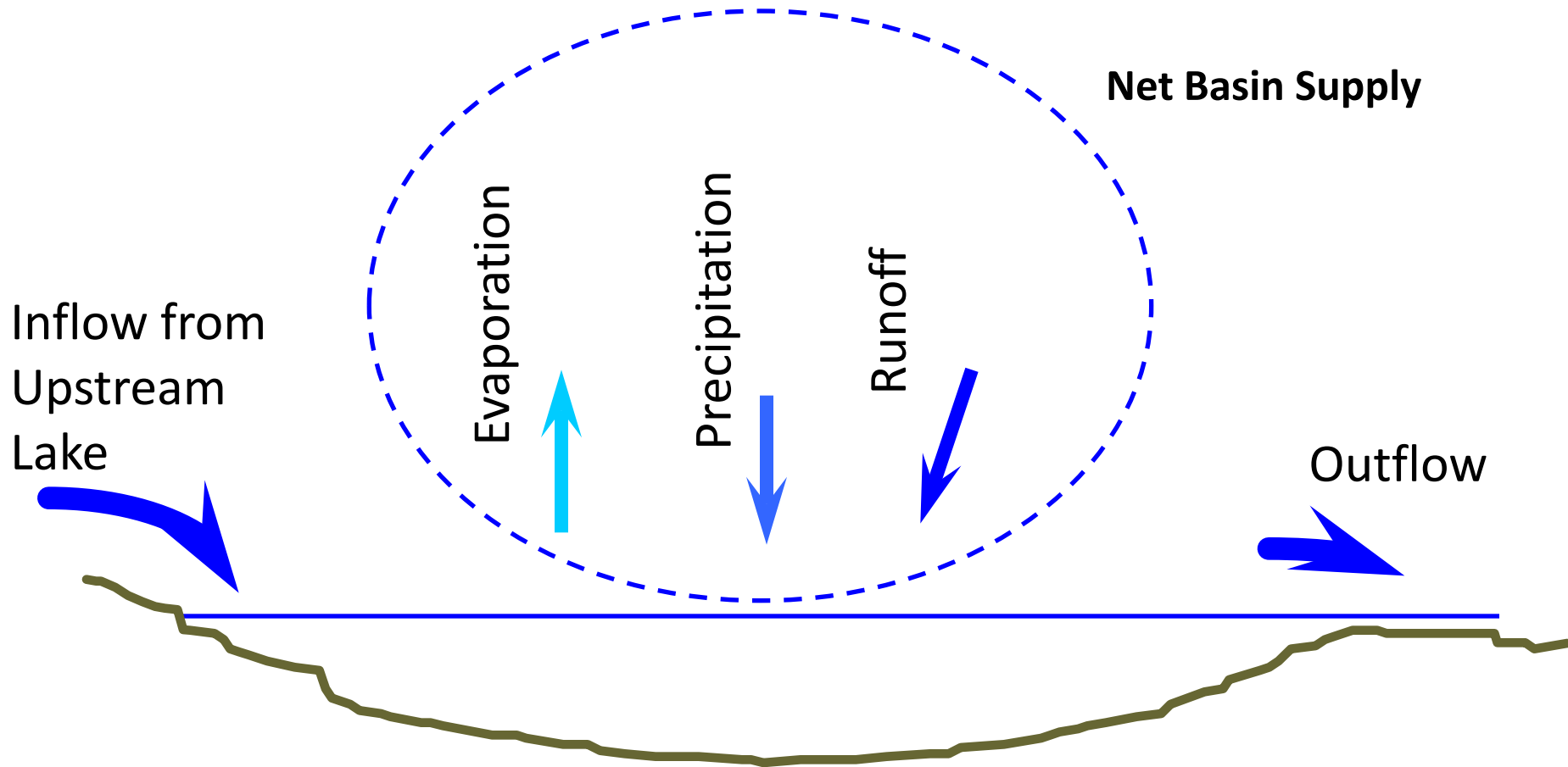
*Preliminary.

**Statistics: Great Lakes: 1918-2010; St. Lawrence River: 1960-2010; Montreal: 1967-2010.

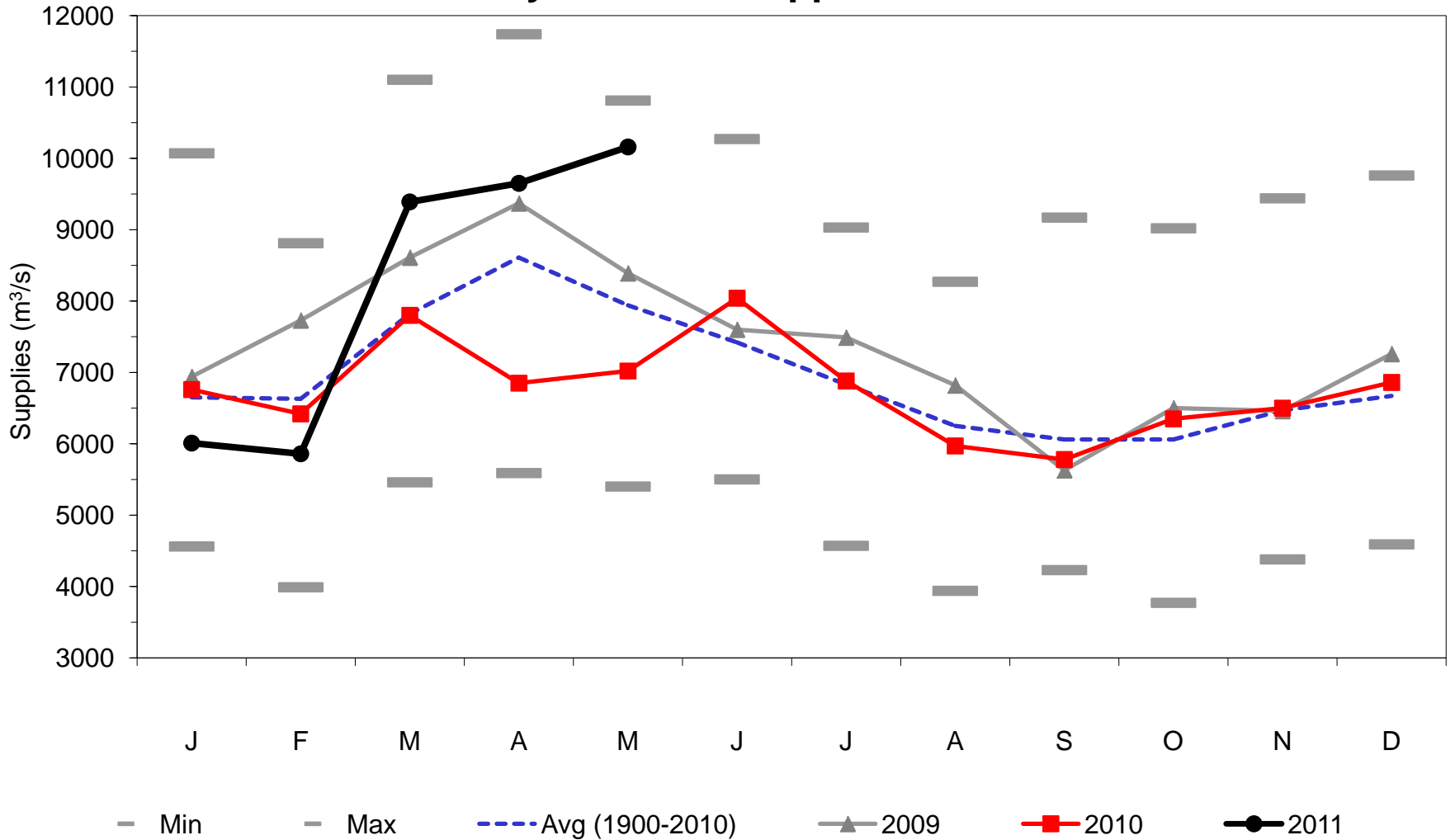
20 June 2011

Great Lakes Water Supplies

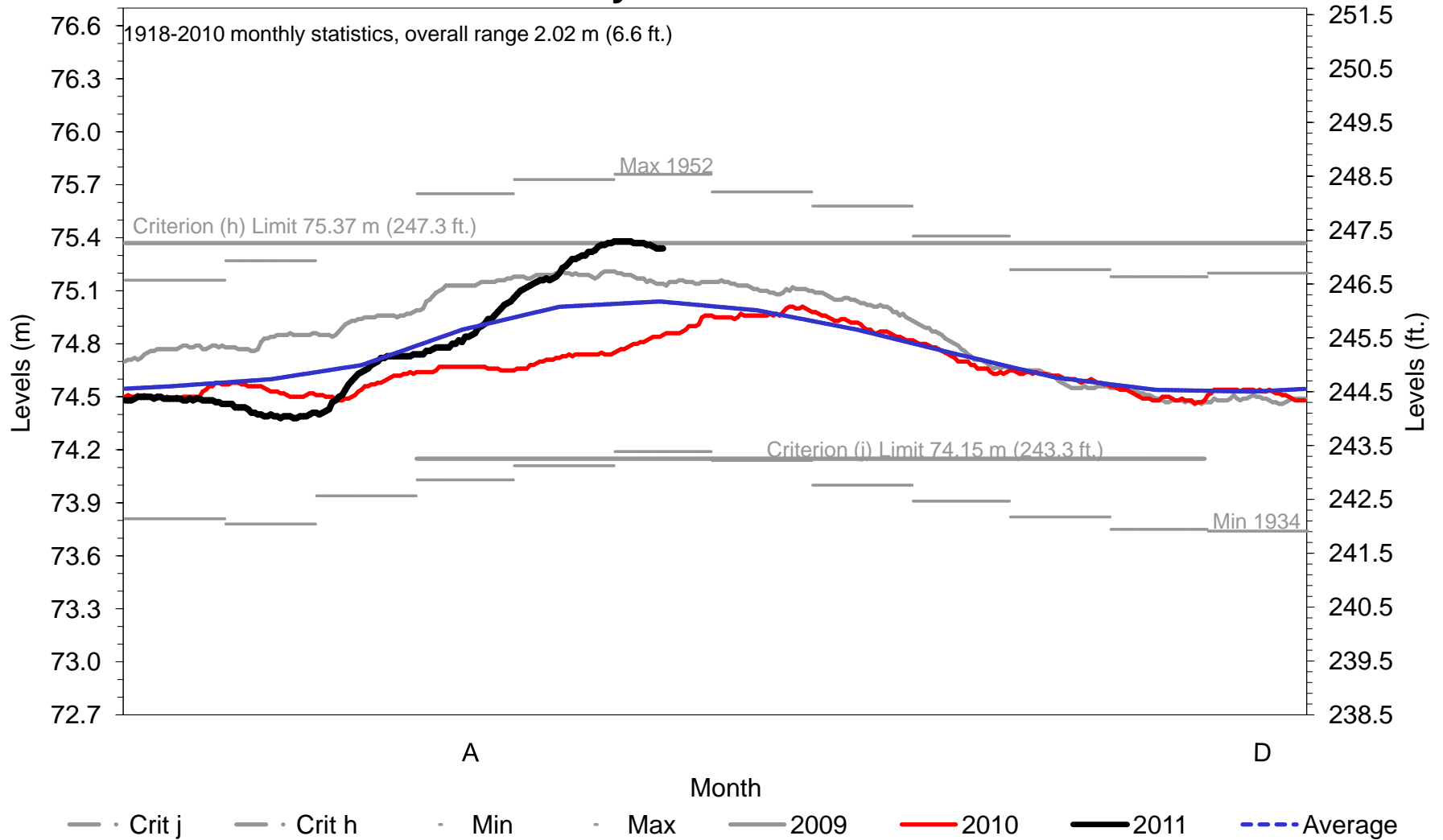
(Factors Affecting Water Levels)



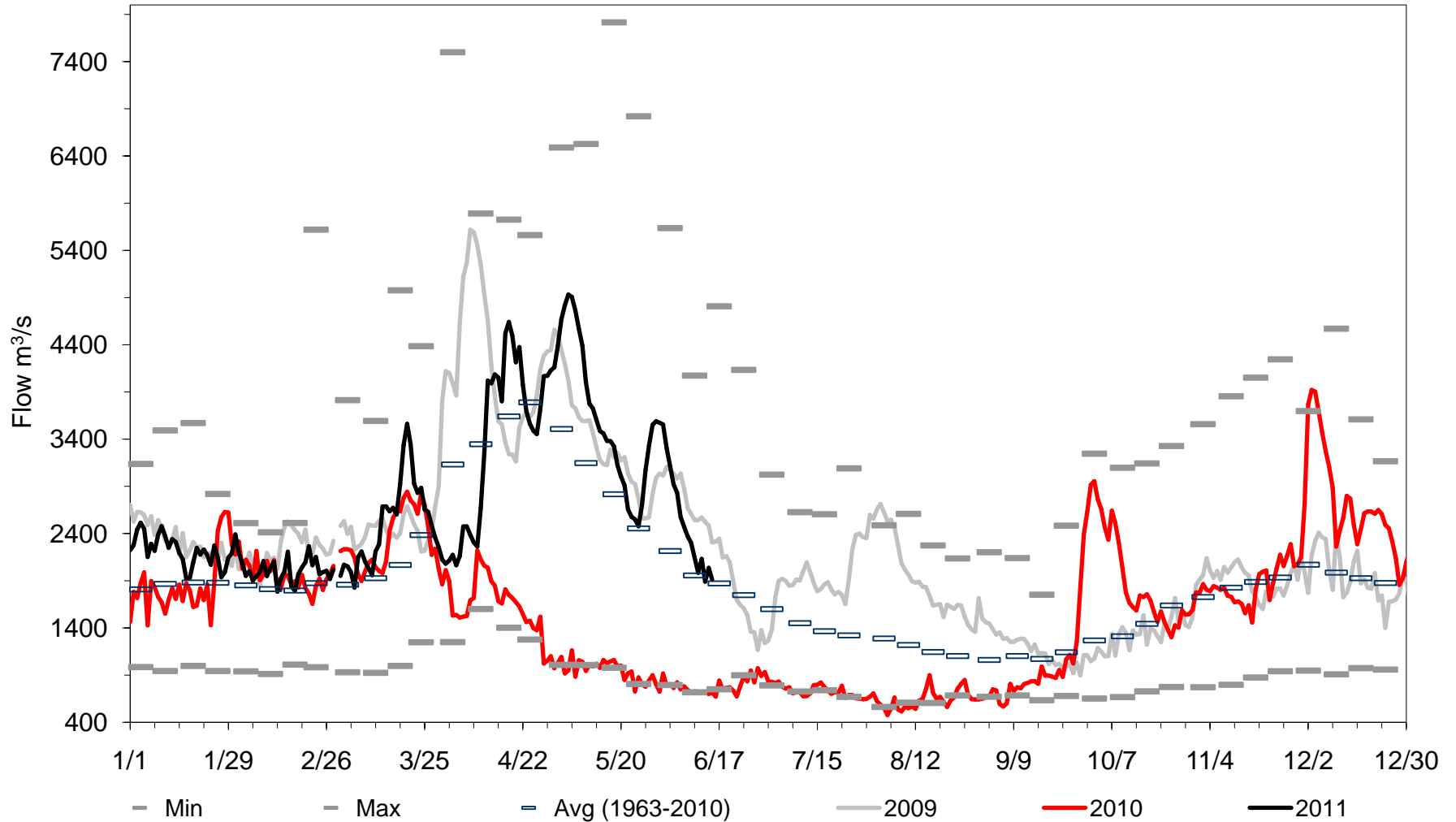
Monthly Net Total Supplies to Lake Ontario



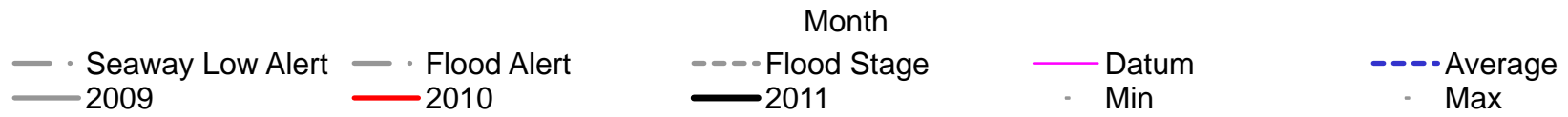
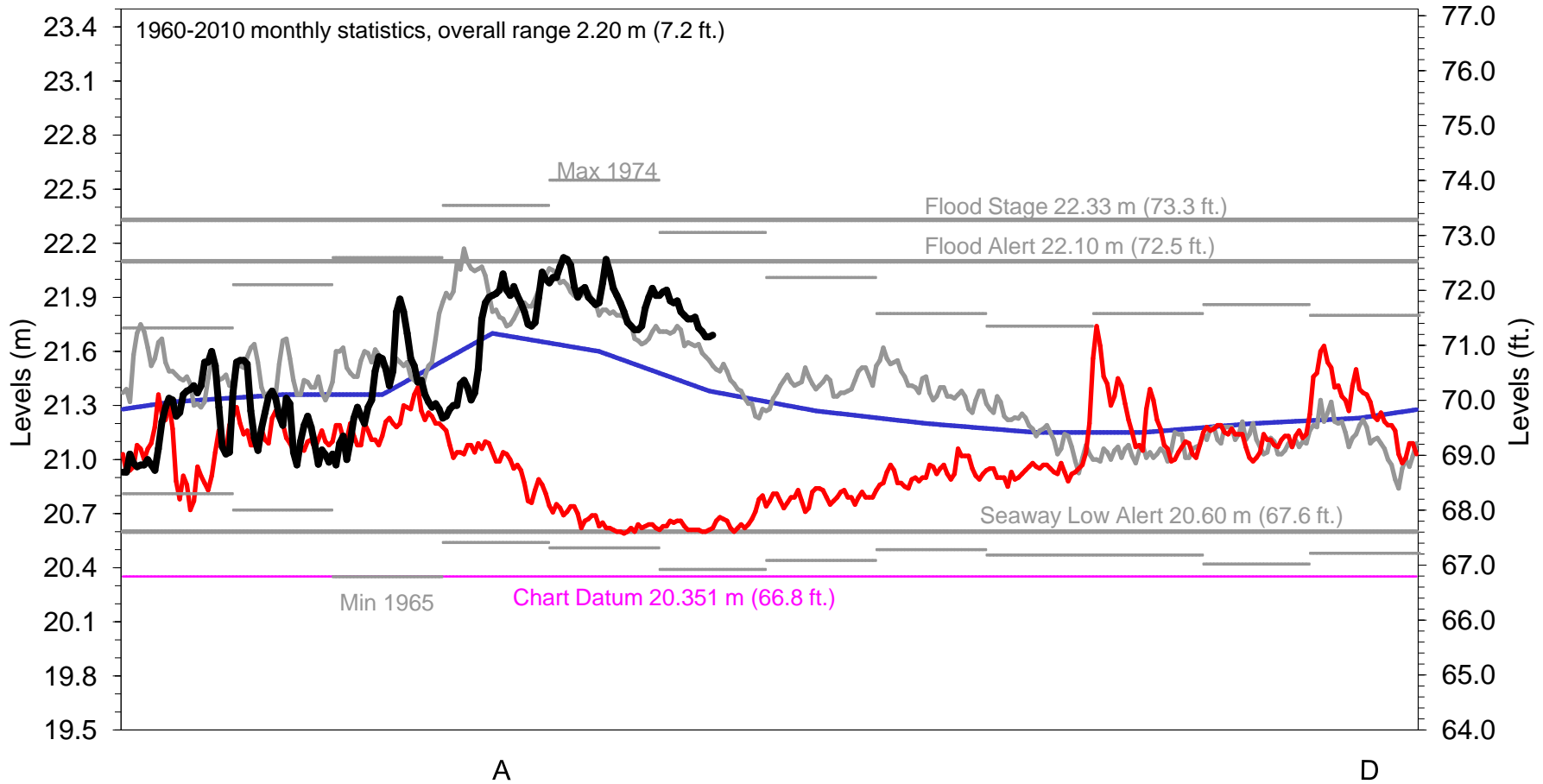
Daily Lake Ontario Levels



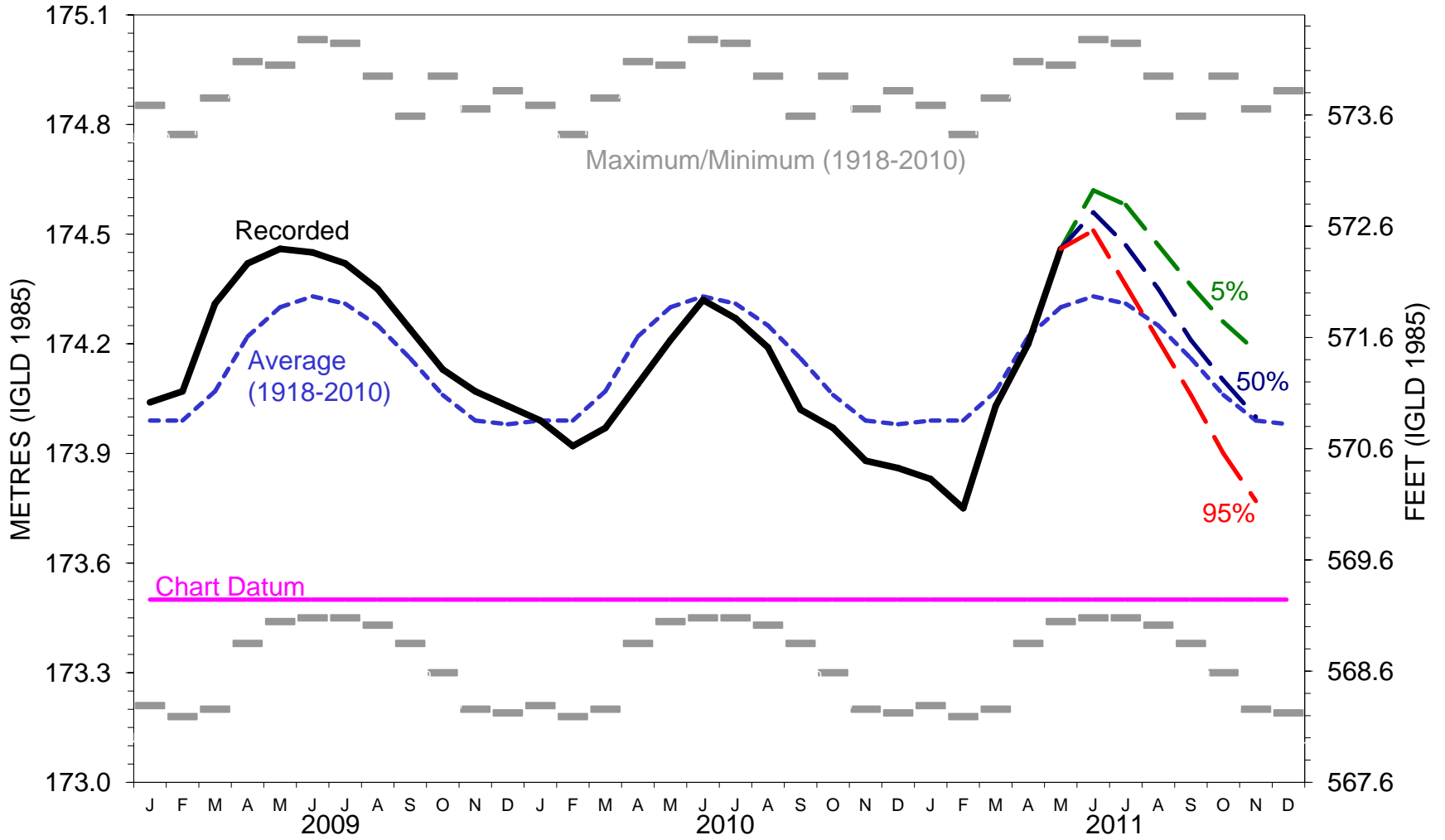
Daily Ottawa River Flow @ Carillon



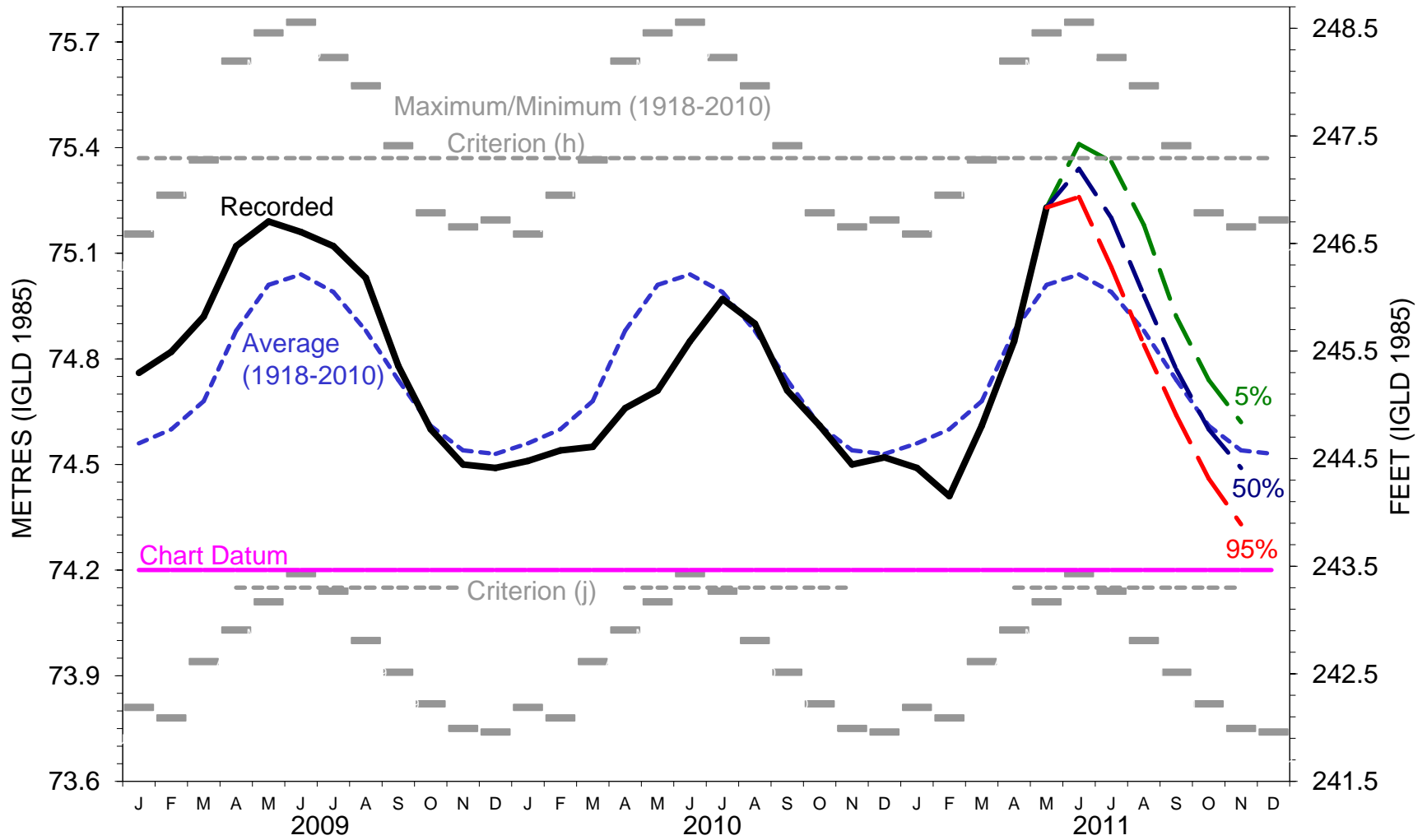
Daily Lake St. Louis Levels @ Pointe-Claire



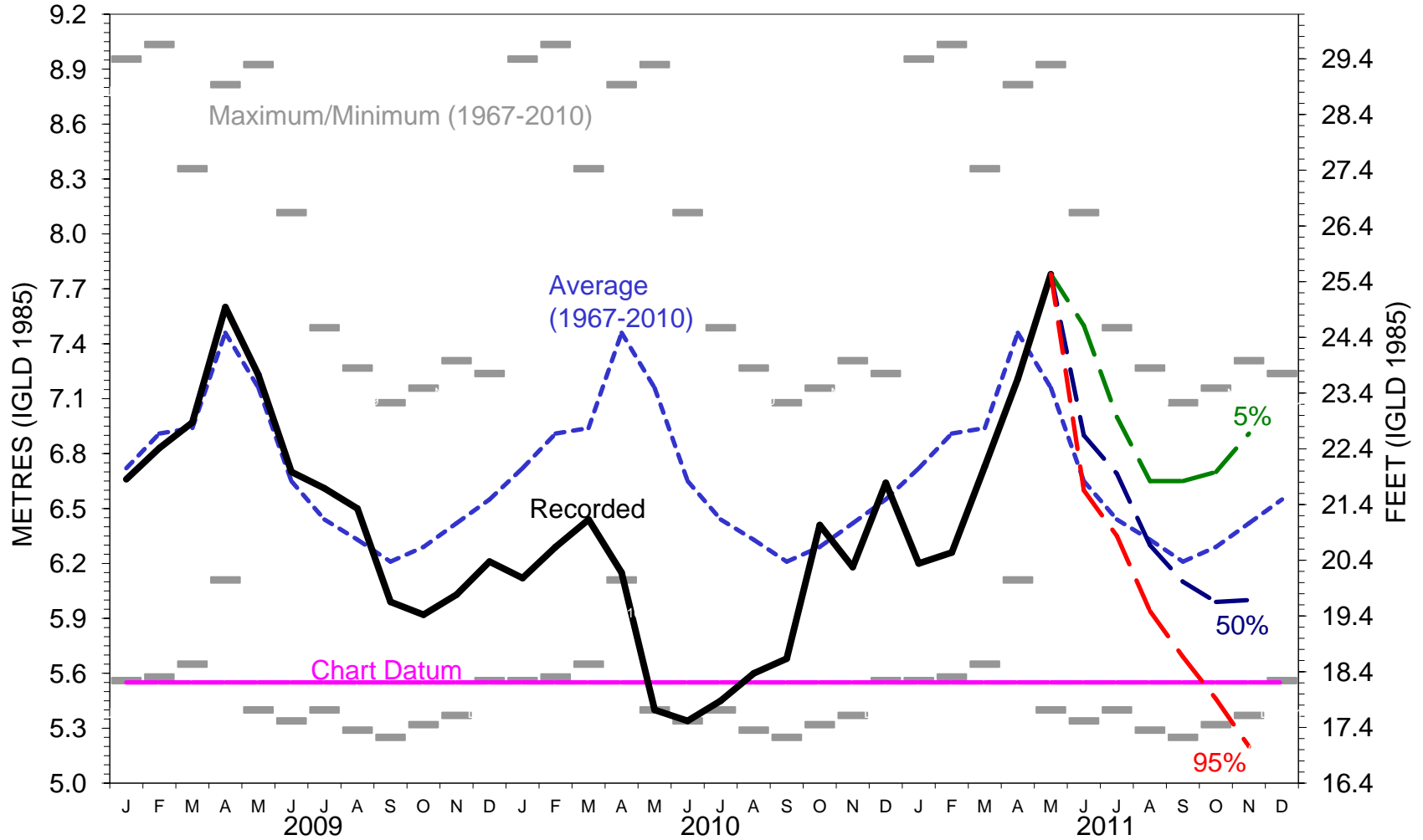
LAKE ERIE MONTHLY WATER LEVEL FORECAST



LAKE ONTARIO MONTHLY WATER LEVEL FORECAST



MONTREAL HARBOUR MONTHLY WATER LEVEL FORECAST



Board's Regulation Strategy

- Release 8780 m³/s until stored water removed – the maximum release of Regulation Plan 1958-D
- Limit to prevent levels above 22.10 m in Lake St Louis and to prevent flooding on Coteau Channel
- Lower overdischarge once daily level on Lake Ontario falls to 75.32 m, but continue above Plan discharges until all stored water is eliminated.
- Reconvene if daily levels on Lake Ontario reach 75.42 m