

Public Meeting/Teleconference September 20, 2011



Oswego/Cornwall
Call-in 1 877 413 4814
822 5560 (English)
733 3134 (French)
Call between 6:45-7:55pm

International St. Lawrence River Board of Control

20 September 2011



Regulation of Lake Ontario follows:

- Boundary Waters Treaty of 1909
 - Established the IJC
 - Set order of precedence of interests
- 1952 IJC Order of Approval
 - Approved construction of hydropower projects which allowed outflows to be controlled
- 1956 Supplementary Order
 - Defined criteria consistent with the Treaty
- Plan 1958-D
 - Established method to manage flow from Lake Ontario

International St. Lawrence River Board of Control

20 September 2011



WATER LEVELS

	Actual*	Compared To	
	15 Sept 2011	Average**	Last Year
Lake Superior	183.24 m (601.18 ft.)	-30 cm (-12 in.)	+3 cm (+1 in.)
Lake Michigan-Huron	176.12 m (577.82 ft.)	-38 cm (-15 in.)	-1 cm (-0 in.)
Lake Erie	174.29 m (571.82 ft.)	+13 cm (+5 in.)	+27 cm (+11 in.)
Lake Ontario	74.76 m (245.28 ft.)	+2 cm (+1 in.)	+6 cm (+2 in.)
Lake St. Lawrence	73.16 m (240.03 ft.)	-7 cm (-3 in.)	-11 cm (-4 in.)
Lake St. Louis	21.14 m (69.36 ft.)	same	+18 cm (+7 in.)
Montreal Harbour	6.18 m (20.28 ft.)	-4 cm (-2 in.)	+45 cm (+18 in.)

*Preliminary.

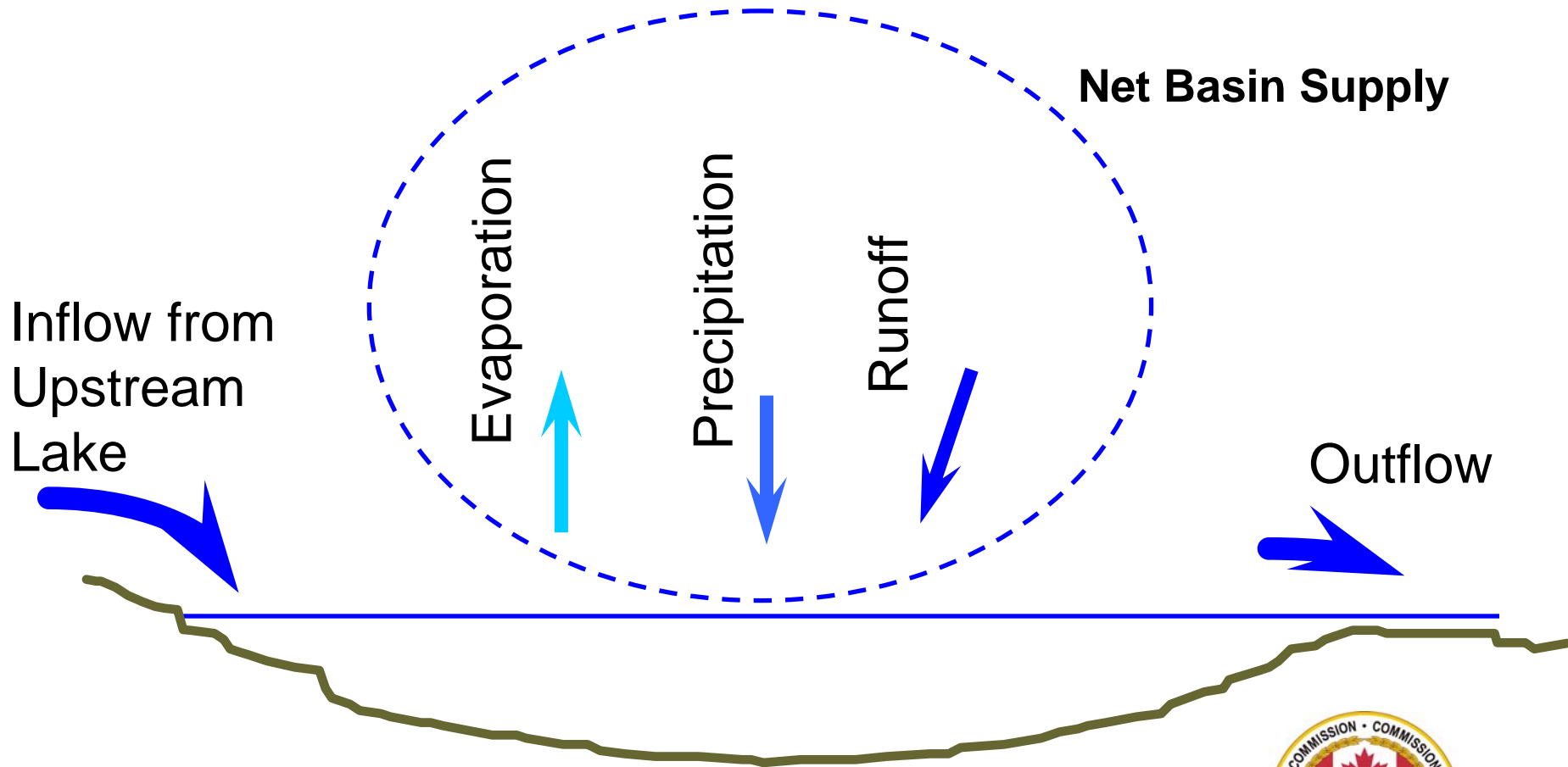
**Statistics: Great Lakes: 1918-2010; St. Lawrence River: 1960-2010; Montreal: 1967-2010.

International St. Lawrence River Board of Control



Great Lakes Water Supplies

(Factors Affecting Water Levels)

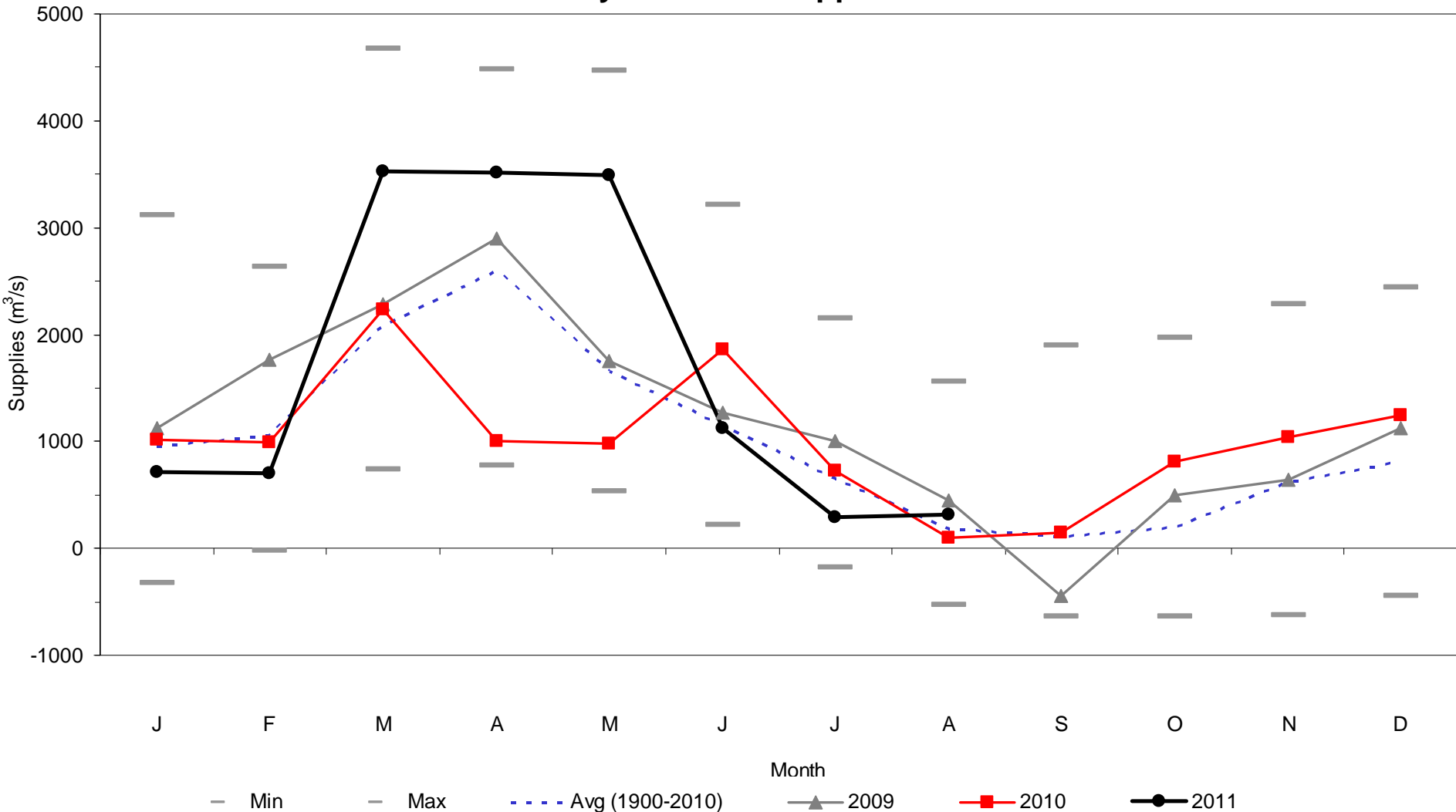


International St. Lawrence River Board of Control

20 September 2011



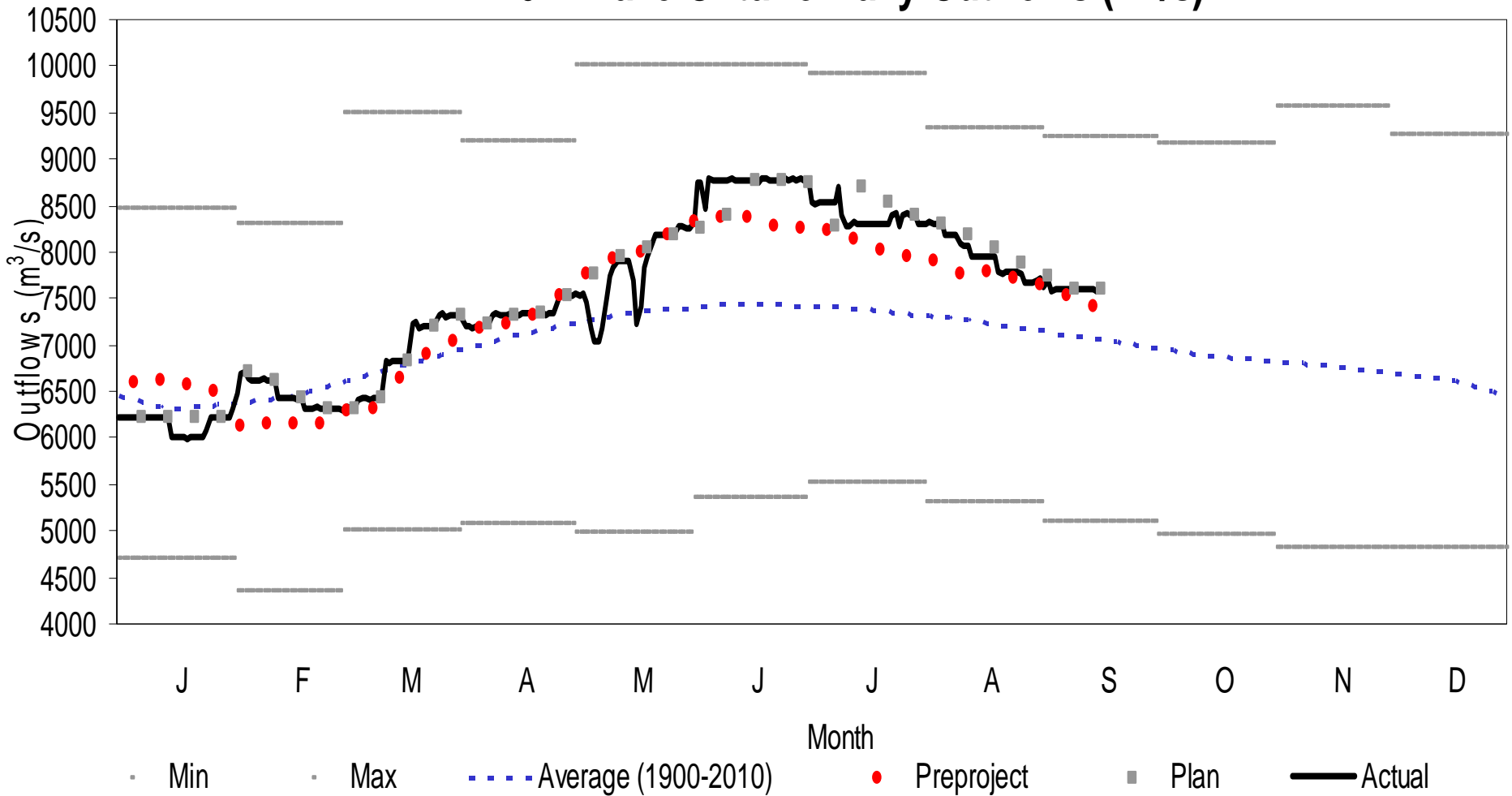
Monthly Net Basin Supplies to Lake Ontario



International St. Lawrence River Board of Control
 20 September 2011



2011 Lake Ontario Daily Outflows (m³/s)

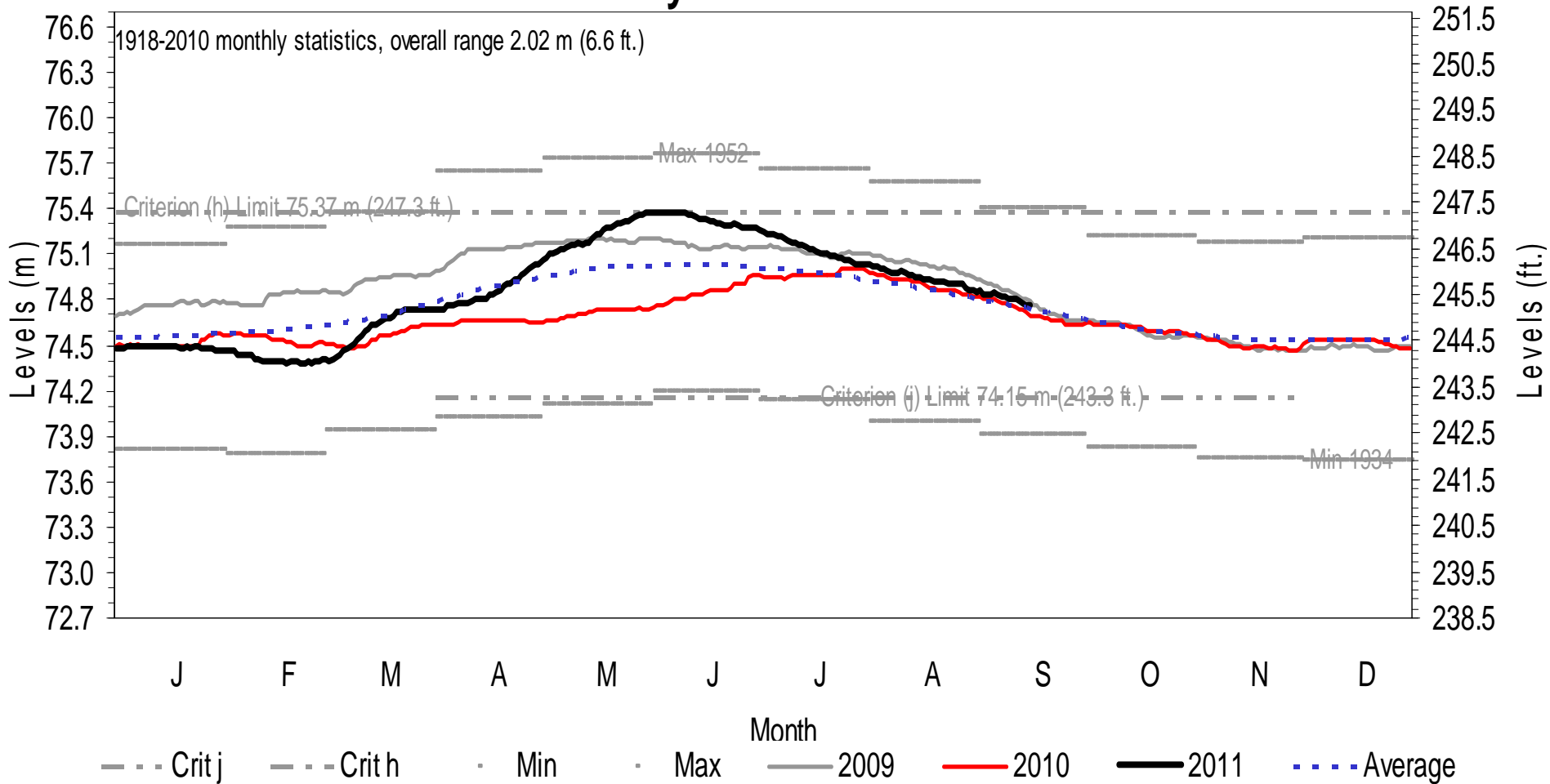


International St. Lawrence River Board of Control

20 September 2011



Daily Lake Ontario Levels

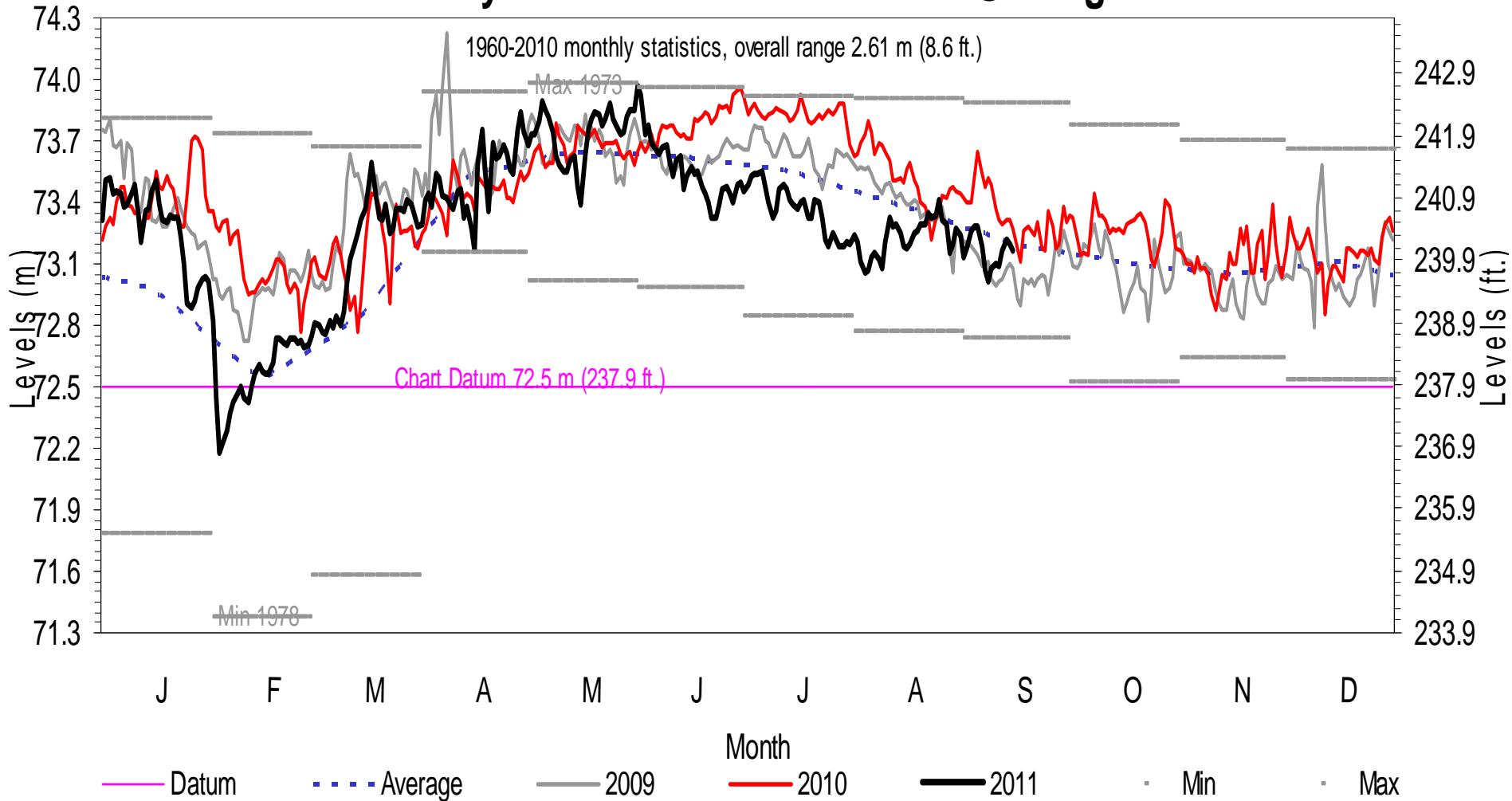


International St. Lawrence River Board of Control

20 September 2011



Daily Lake St. Lawrence Levels @ Long Sault Dam

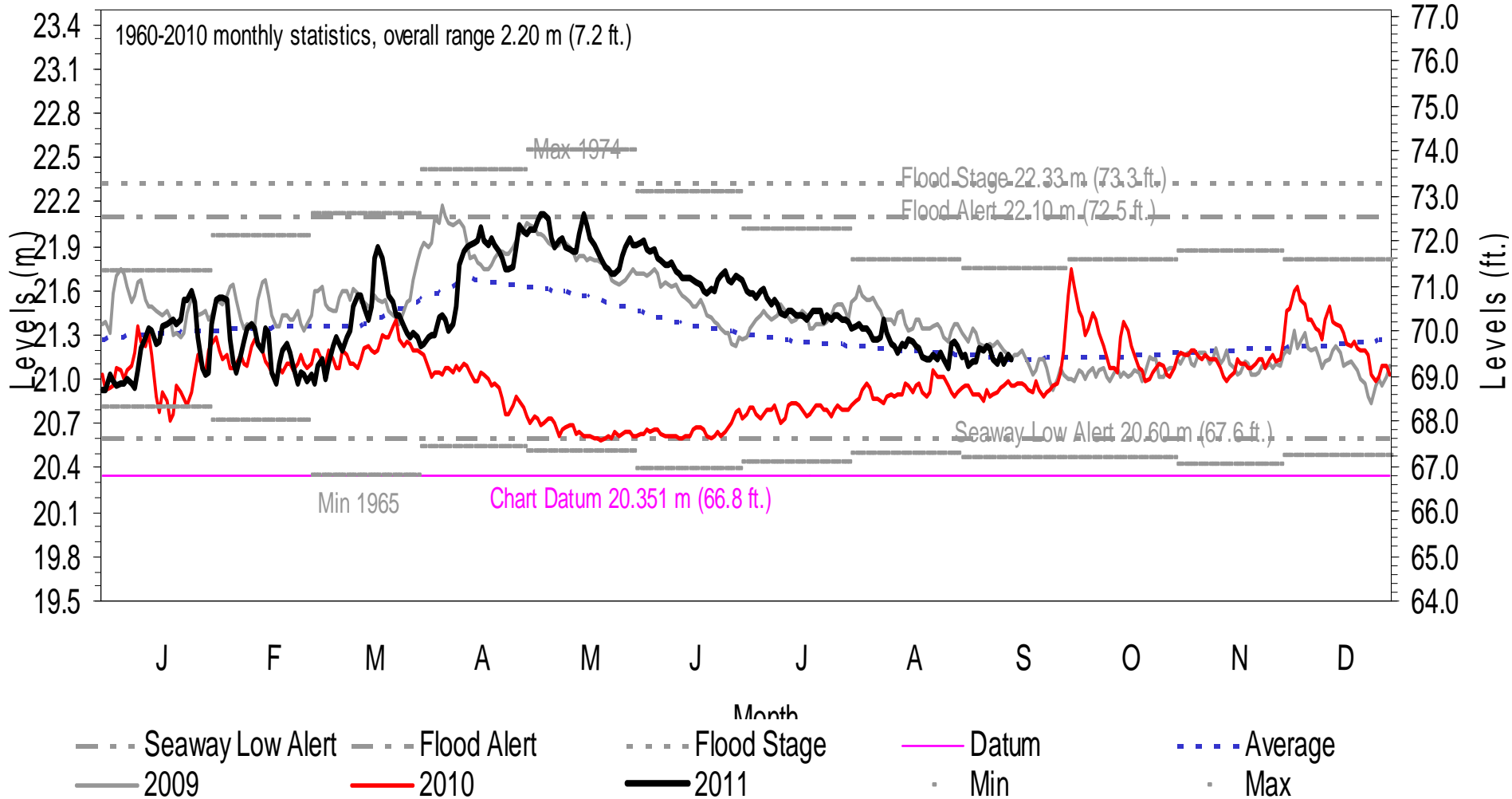


International St. Lawrence River Board of Control

20 September 2011



Daily Lake St. Louis Levels @ Pointe-Claire

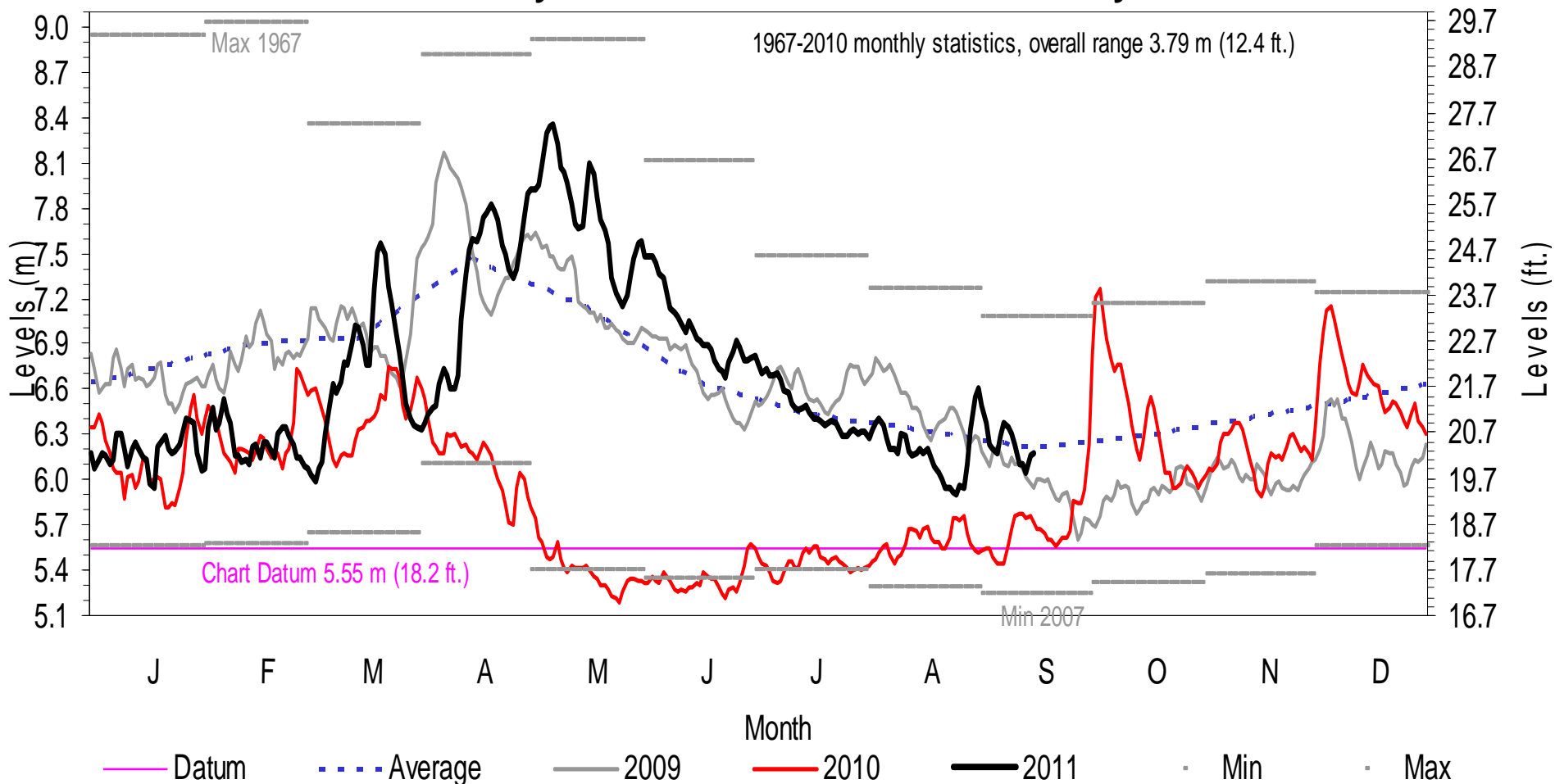


International St. Lawrence River Board of Control

20 September 2011



Daily Port of Montreal Levels @ Jetty #1

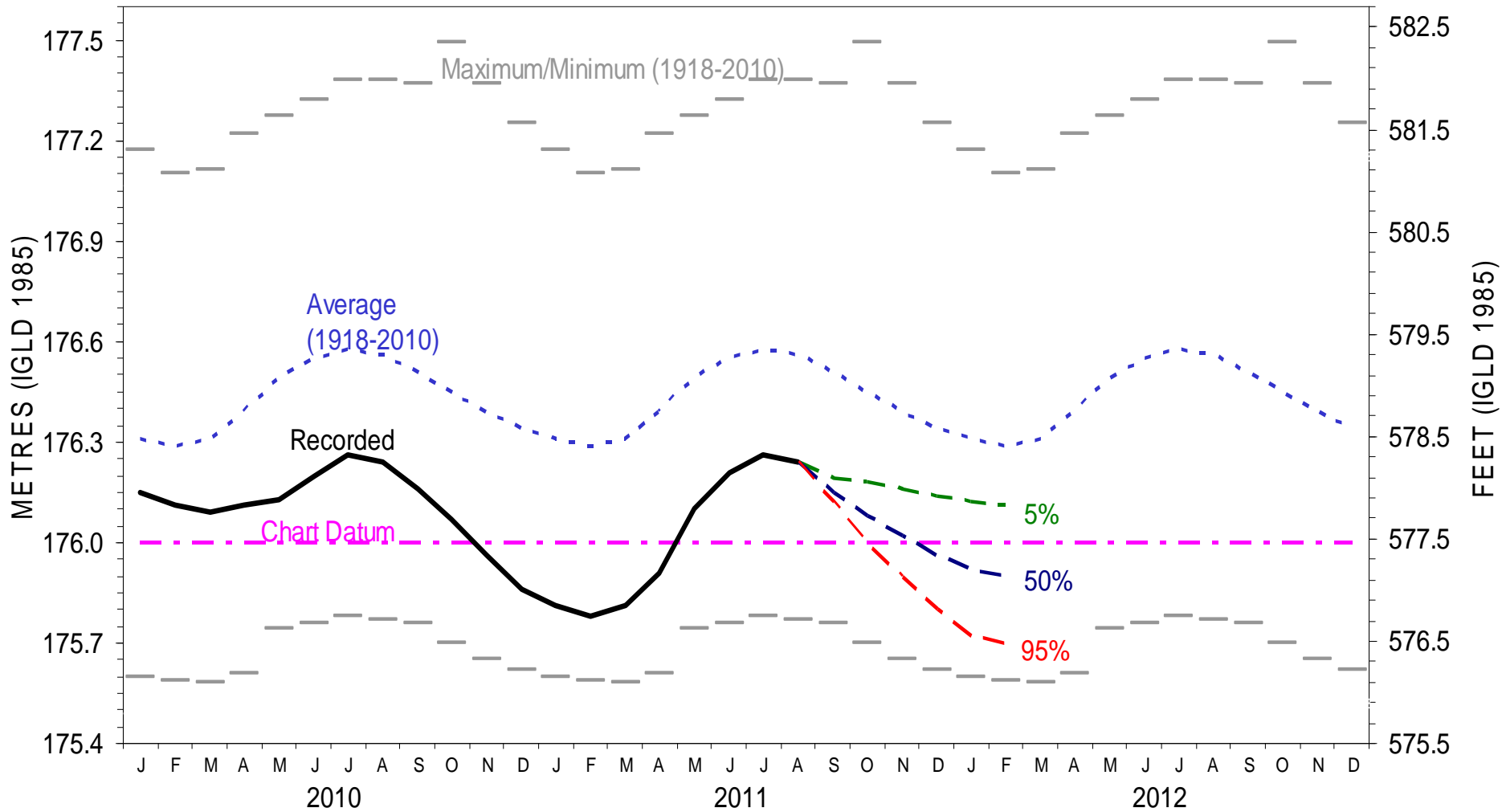


International St. Lawrence River Board of Control

20 September 2011



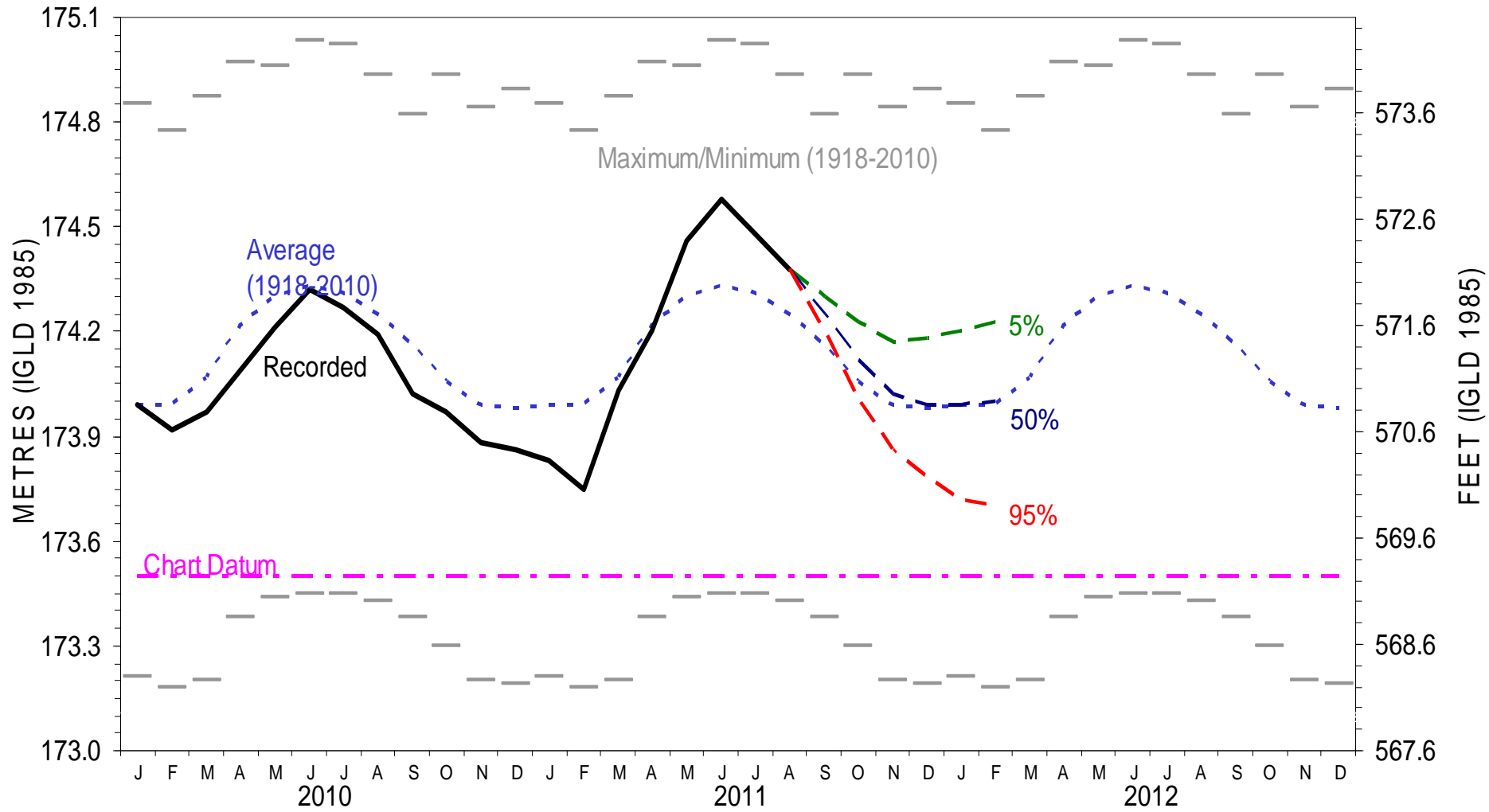
LAKES MICHIGAN-HURON MONTHLY WATER LEVEL FORECAST



International St. Lawrence River Board of Control
20 September 2011



LAKE ERIE MONTHLY WATER LEVEL FORECAST

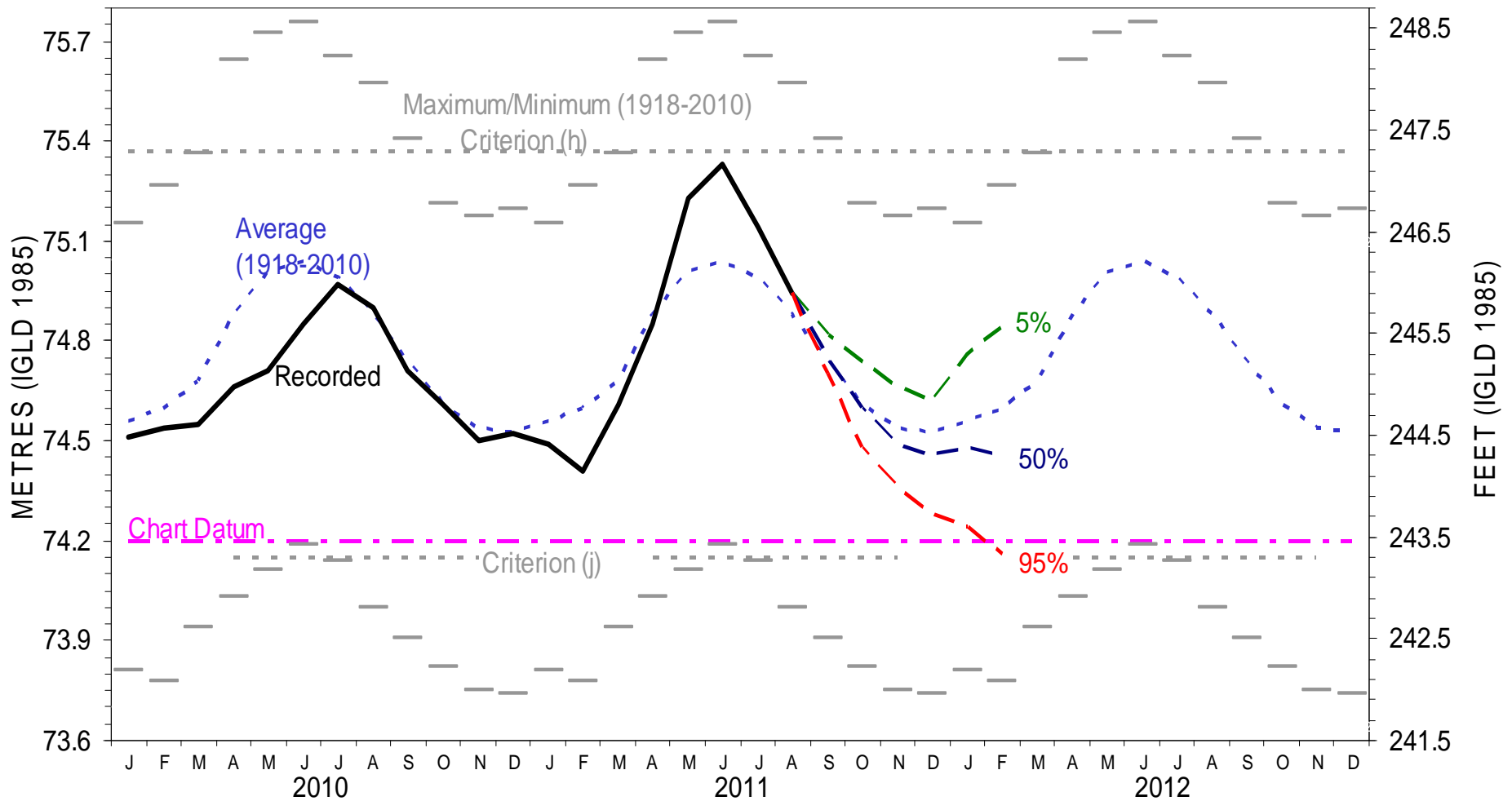


International St. Lawrence River Board of Control

20 September 2011



LAKE ONTARIO MONTHLY WATER LEVEL FORECAST

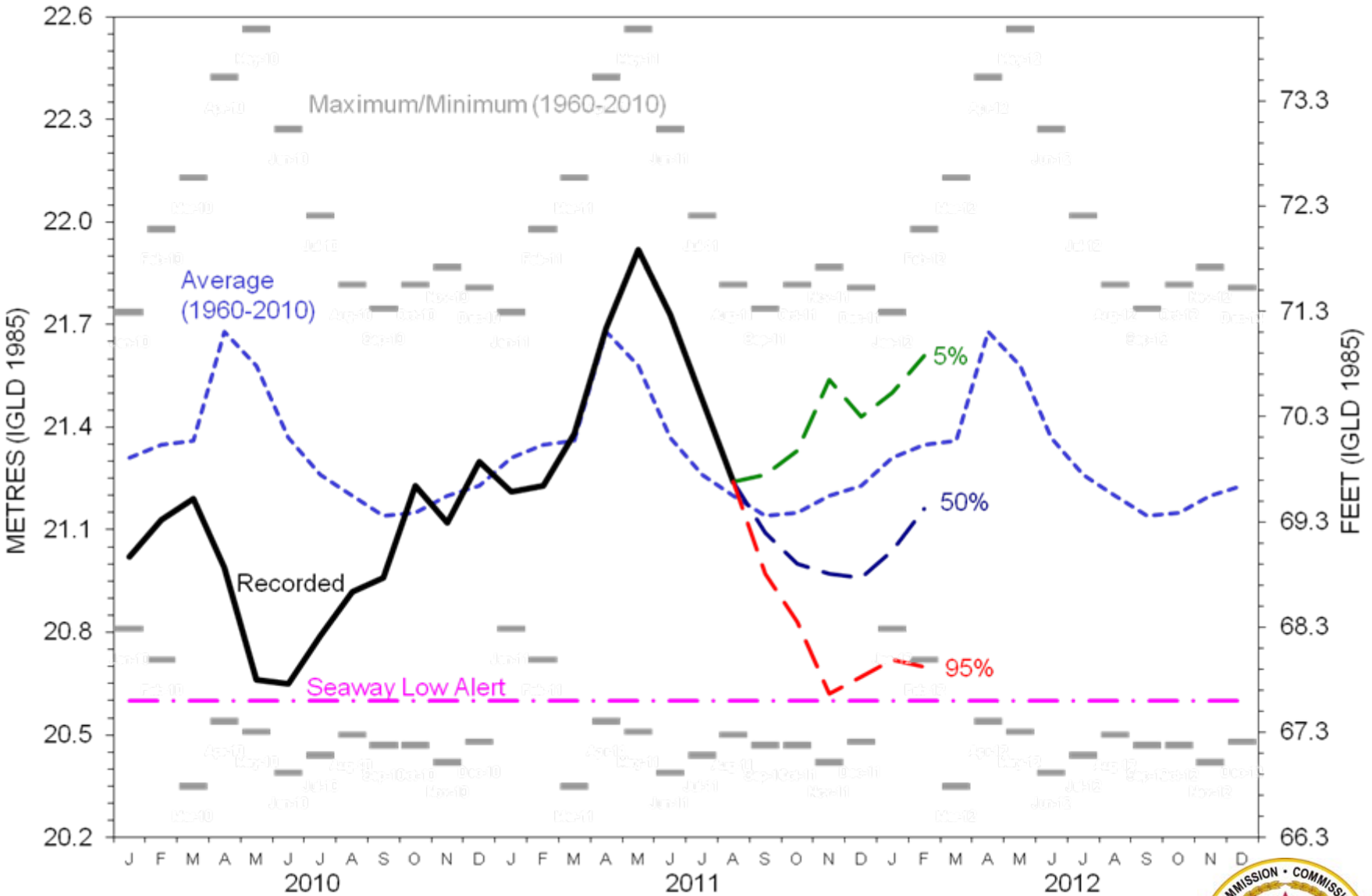


International St. Lawrence River Board of Control

20 September 2011



LAKE ST. LOUIS MONTHLY WATER LEVEL FORECAST

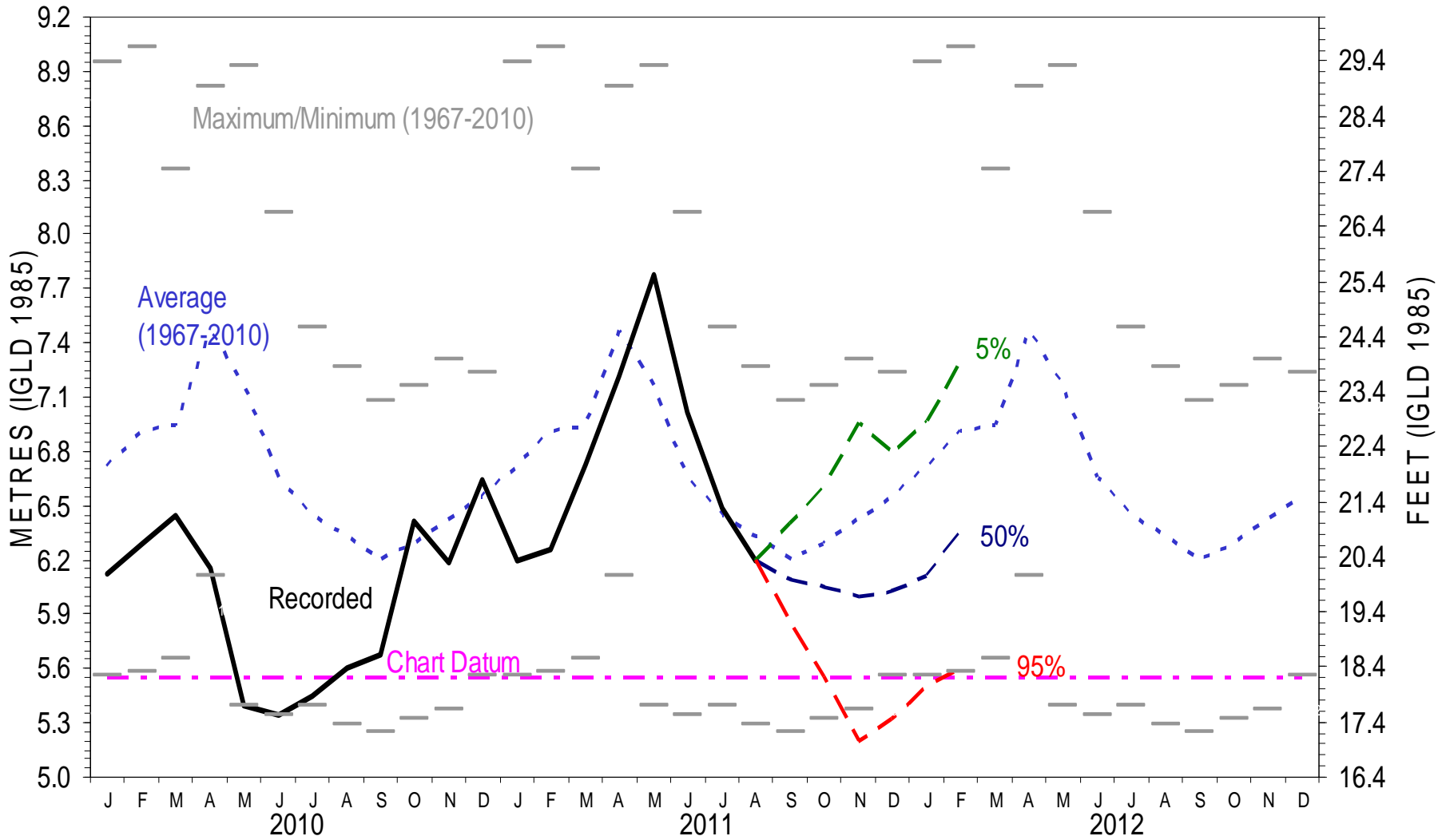


International St. Lawrence River Board of Control

20 September 2011



MONTREAL HARBOUR MONTHLY WATER LEVEL FORECAST



International St. Lawrence River Board of Control

20 September 2011



Proposed Regulation Strategy

Release outflows in accordance with Regulation Plan 1958-D (currently, Lake Ontario is 2.7 cm above the level computed by the Plan).

If a critical situation arises, the outflows may be other than Plan-specified temporarily.



Public Meeting/Teleconference September 20, 2011



**Oswego, Cornwall and
Call-in 1 877 413 4814
822 5560 (English)
733 3134 (French)
Call between 6:45-7:55pm**

International St. Lawrence River Board of Control

20 September 2011



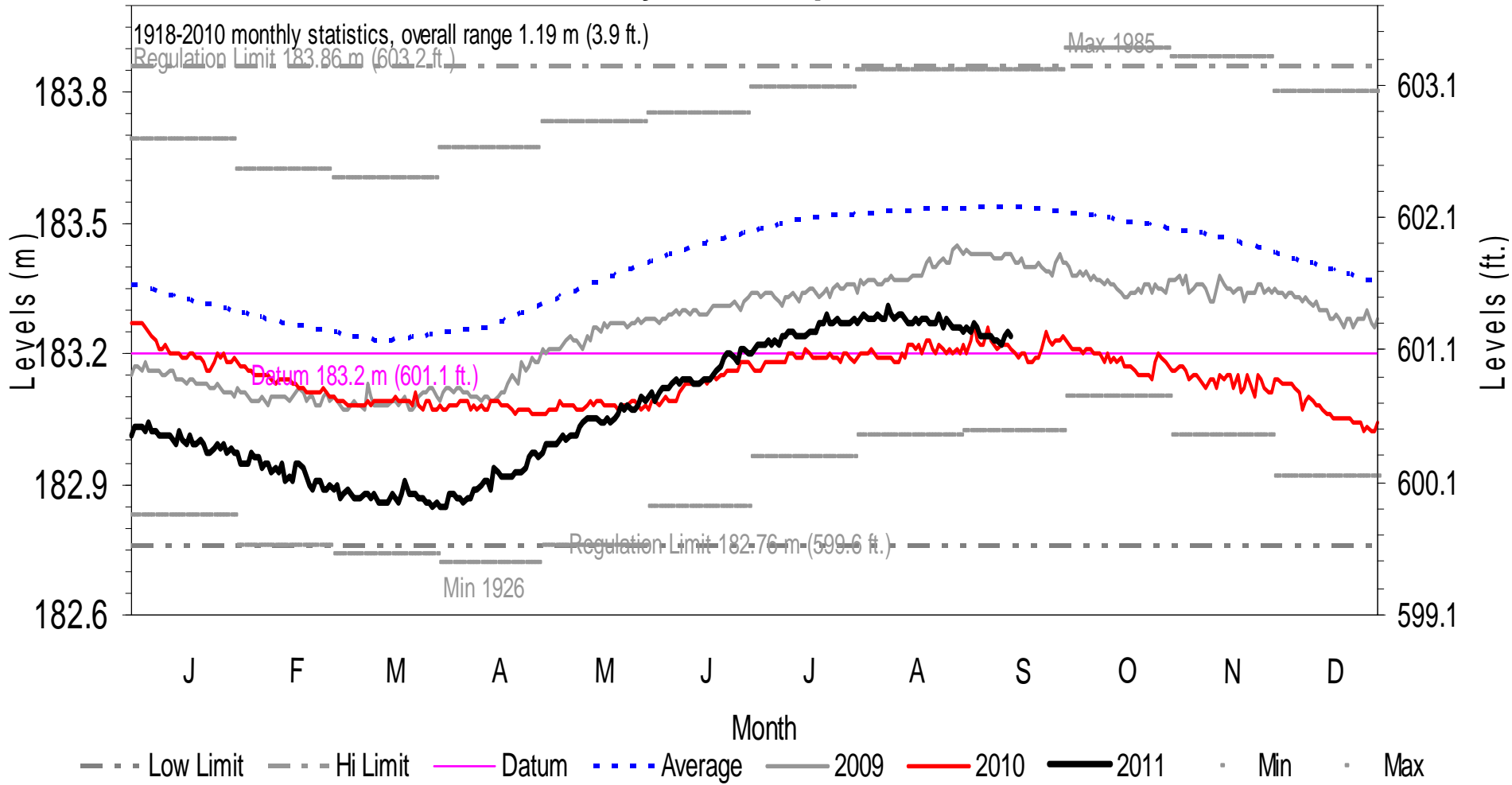
Additional Information

20 September 2011

International St. Lawrence River Board of Control



Daily Lake Superior Levels

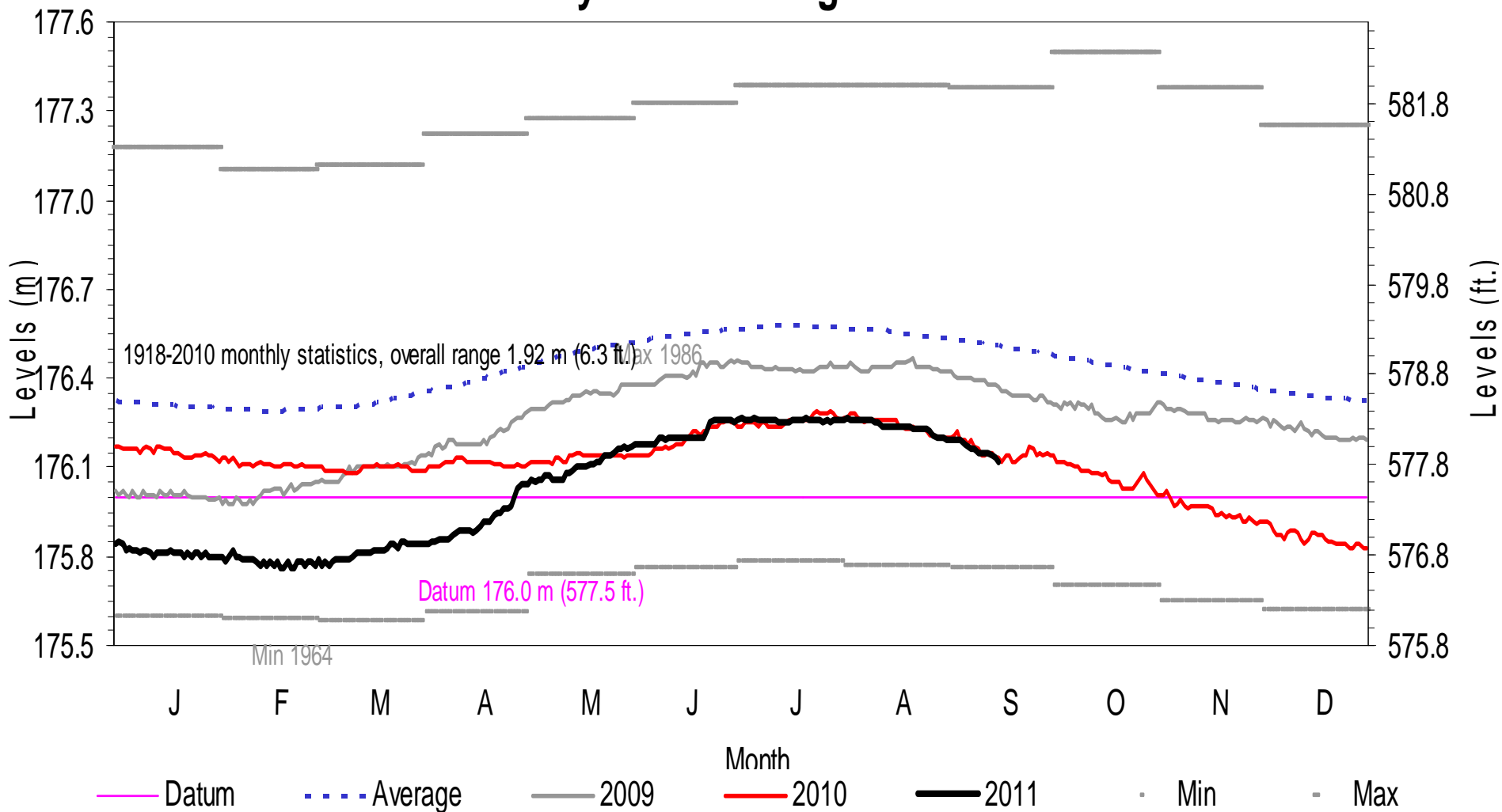


International St. Lawrence River Board of Control

20 September 2011



Daily Lakes Michigan-Huron Levels

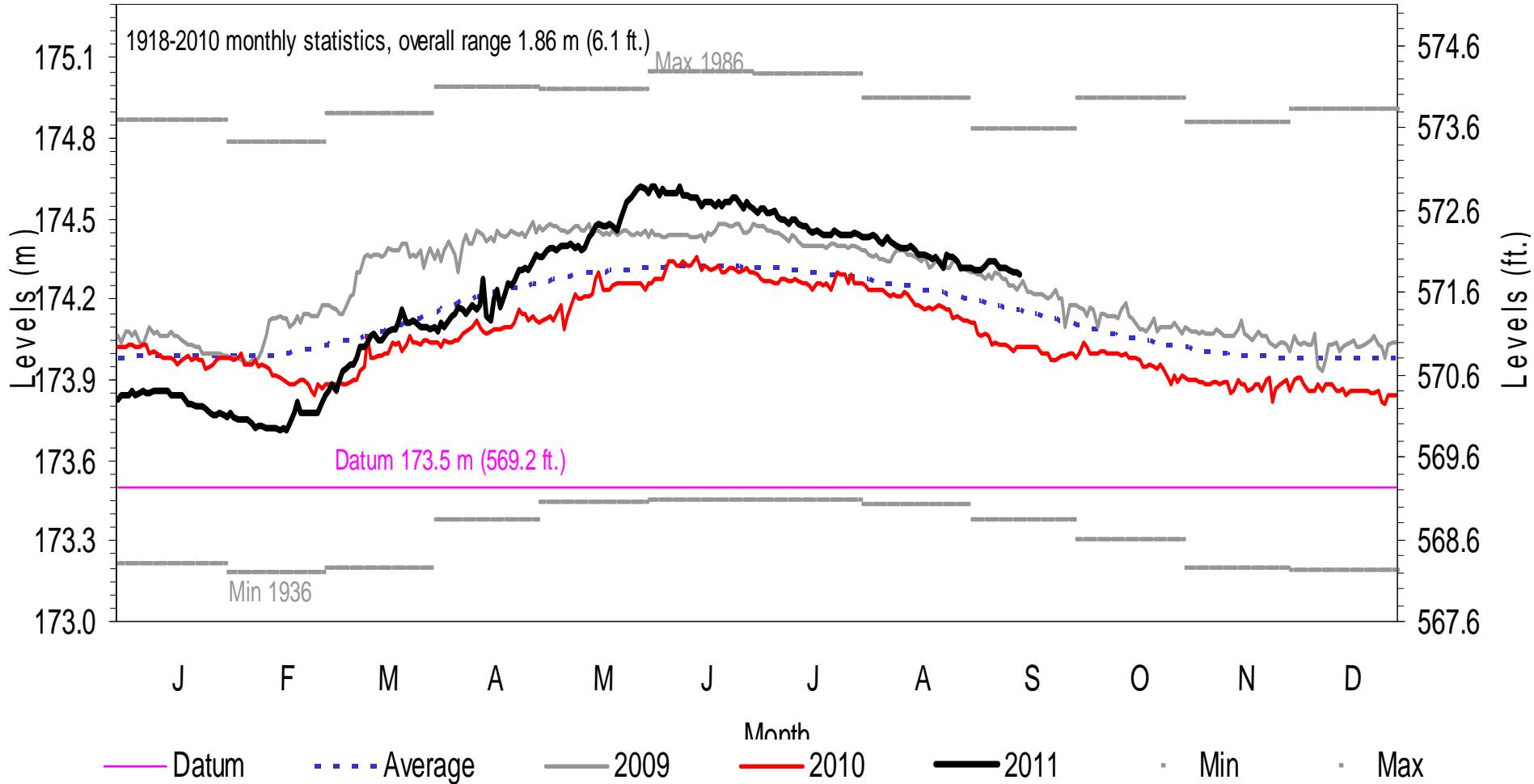


International St. Lawrence River Board of Control

20 September 2011



Daily Lake Erie Levels

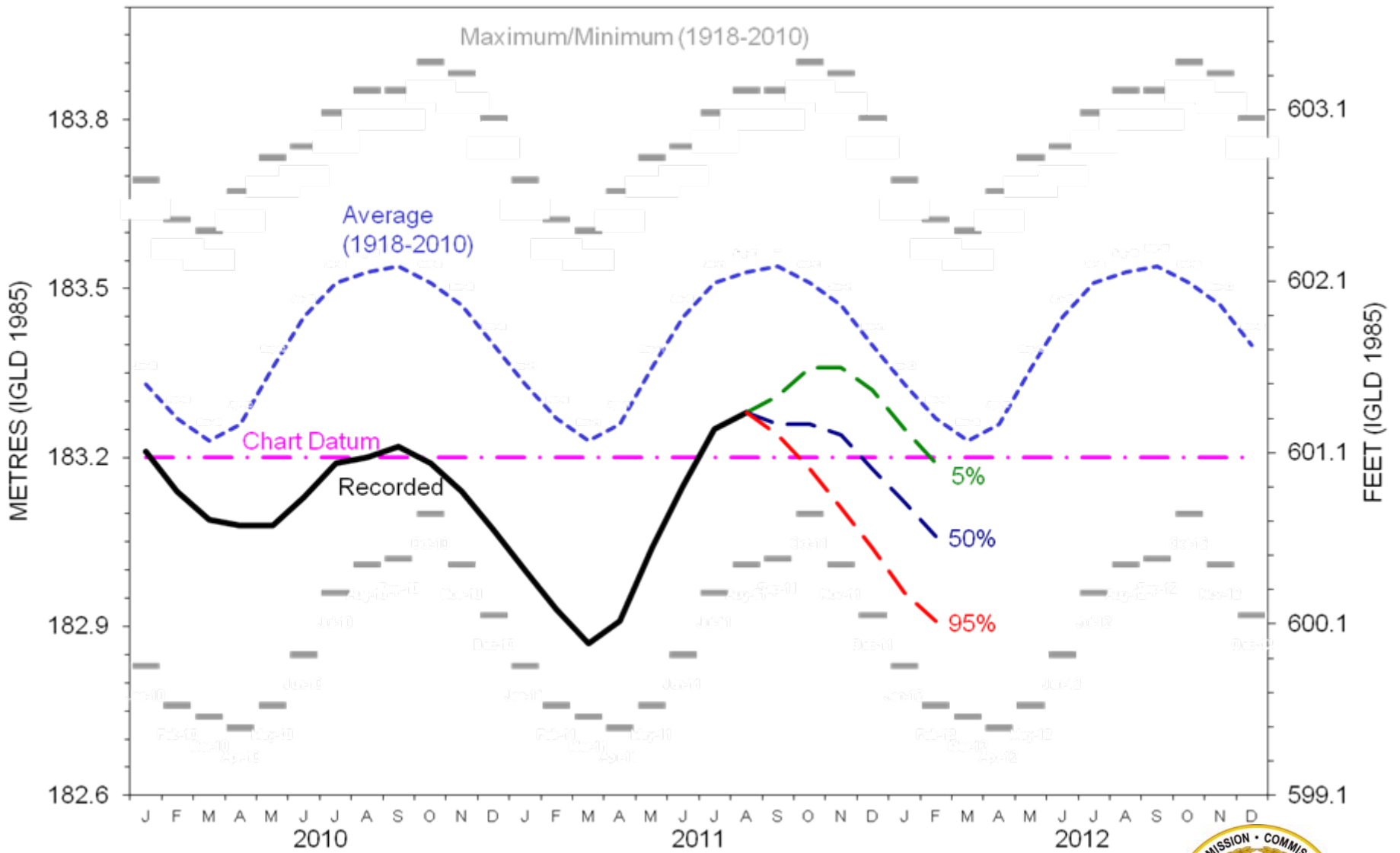


International St. Lawrence River Board of Control

20 September 2011



LAKE SUPERIOR MONTHLY WATER LEVEL FORECAST

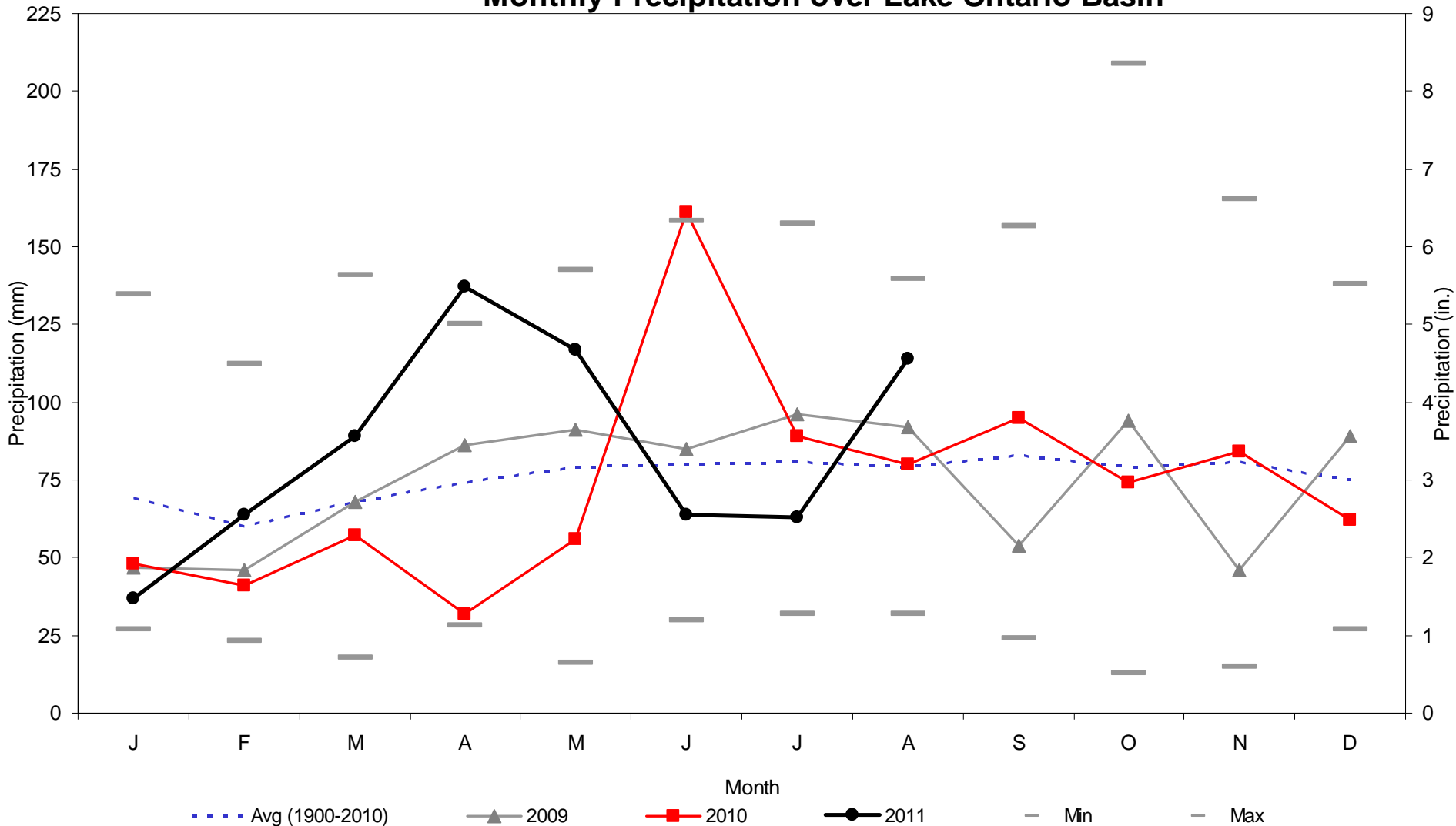


International St. Lawrence River Board of Control

20 September 2011



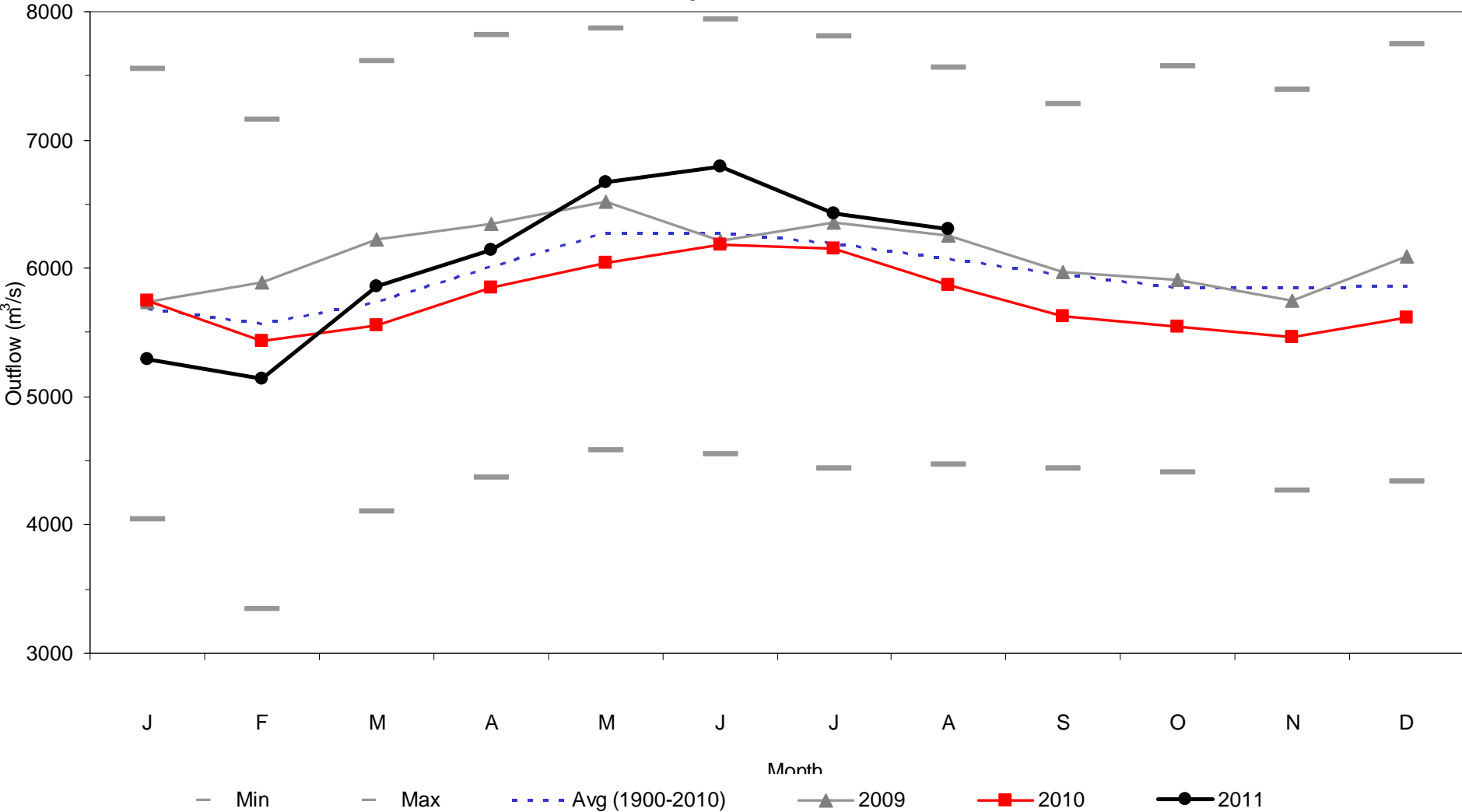
Monthly Precipitation over Lake Ontario Basin



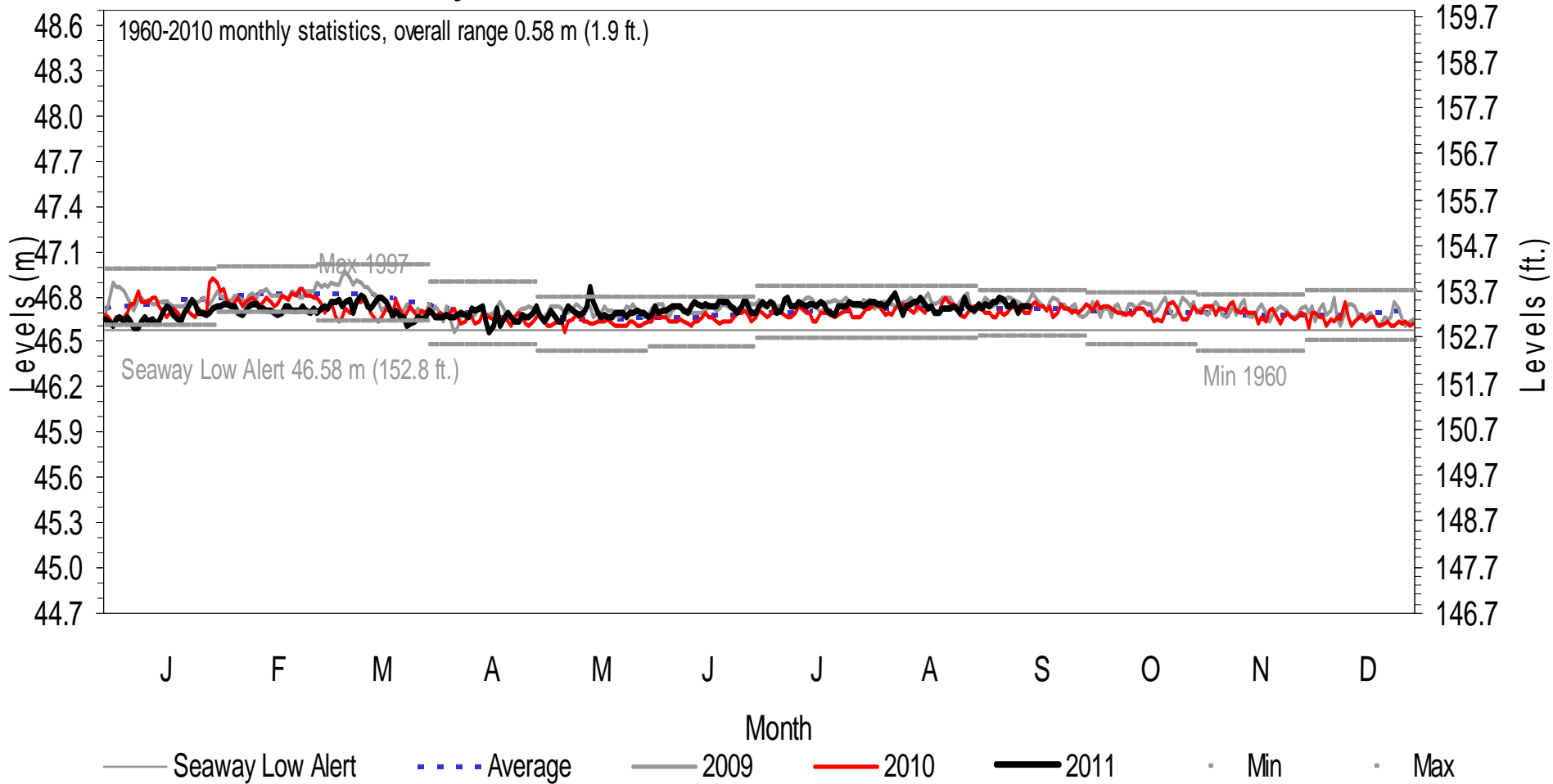
International St. Lawrence River Board of Control
20 September 2011



Monthly Lake Erie Outflows



Daily Lake St. Francis Levels @ Summerstown

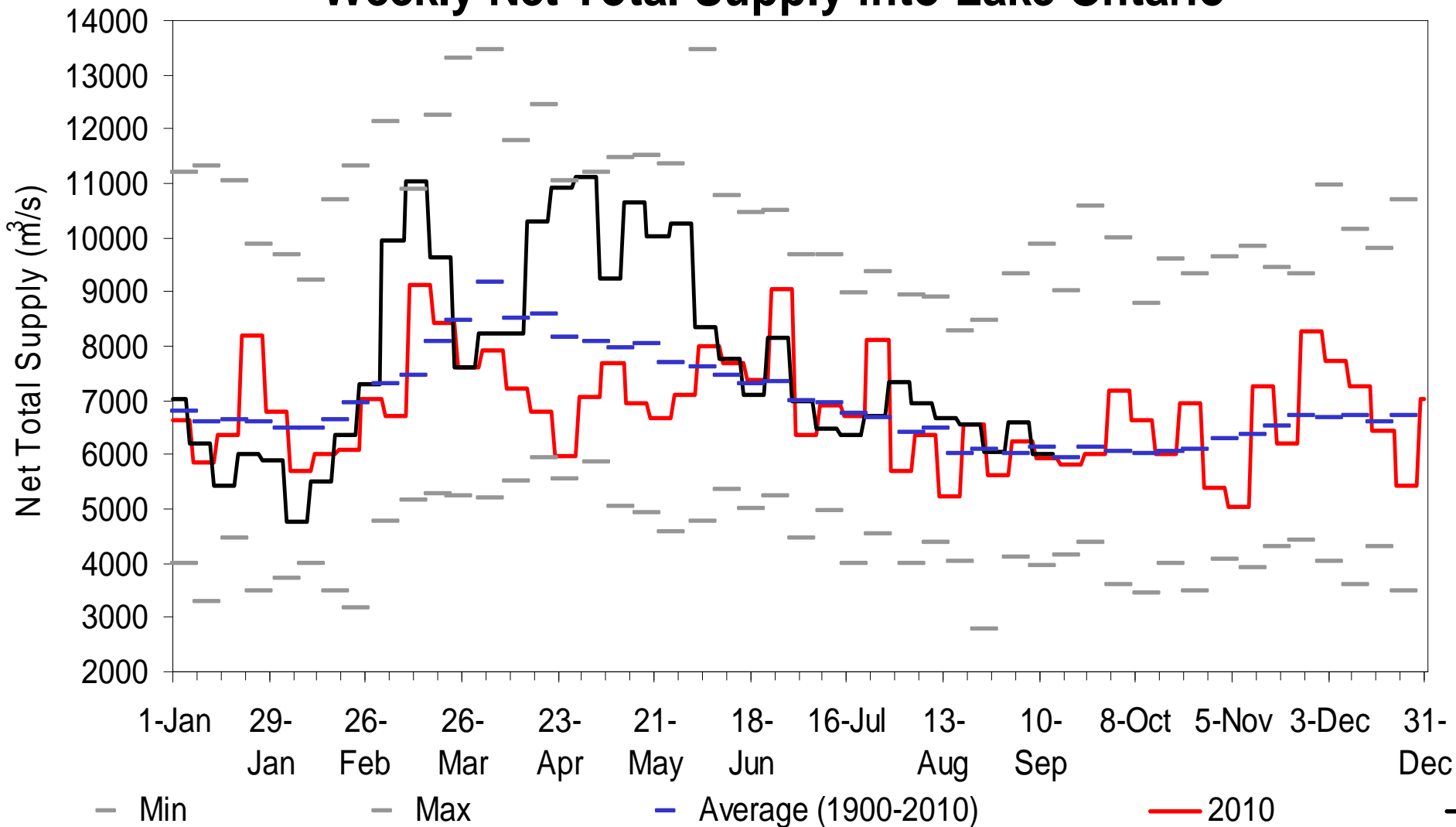


International St. Lawrence River Board of Control

20 September 2011



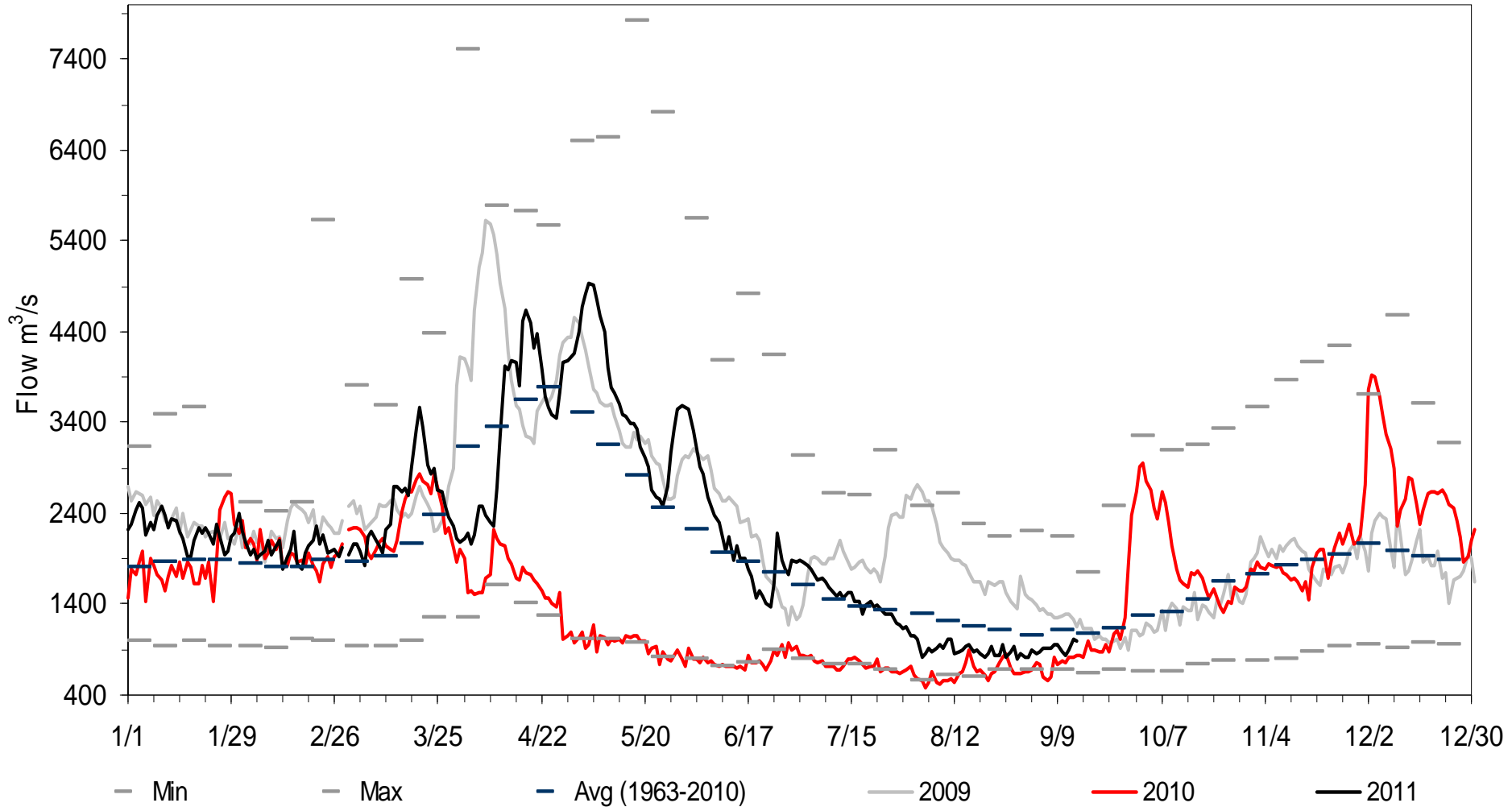
Weekly Net Total Supply into Lake Ontario



International St. Lawrence River Board of Control
 20 September 2011



Daily Ottawa River Flow @ Carillon



International St. Lawrence River Board of Control
20 September 2011



Summary of IJC Criteria (1956)

- a) Don't reduce minimum level at Montreal Harbour below level which would have occurred in the past with like supplies (unregulated)
- b) Winter flows as high as feasible
- c) Flow during breakup in Montreal Harbour no greater than unregulated
- d) Flow during Ottawa River freshet no greater than unregulated
- e) Keep minimum flows as high as feasible
- f) Keep maximum flows as low as possible

International St. Lawrence River Board of Control

20 September 2011



Summary of IJC Criteria (continued)

- g) Reduce extremes in Lake Ontario levels
- h) Maximum monthly mean Lake Ontario level 75.37 m (247.3 ft).
- i) Reduce frequency of monthly mean levels above 75.07 m (246.3 ft) compared to unregulated.
- j) Minimum monthly mean Lake Ontario level in navigation season 74.15 m (243.3 ft).
- k) If supplies **greater** than past, operate to benefit riparians.
If supplies **less** than past, operate for navigation and power.

International St. Lawrence River Board of Control

20 September 2011



IJC Orders also specify:

- Minimum levels for navigation in Lake St. Lawrence
- Maximum current velocity in river to maintain safe navigation
- Iroquois Dam to limit high levels on Lake St. Lawrence

